

Australia

Per-Capita Emissions in 2030 rel. 2015 (excl. LULUCF): **-28%**

NDC 2025

NDC 2030

2015 World Rank

2025 World Rank

2030 World Rank

Share of World Emissions excl. LULUCF (Rank):

1.1% #17

0.9% #23

0.8% #25

Per-Capita Emissions (tCO₂eq/cap)

21.9t #7

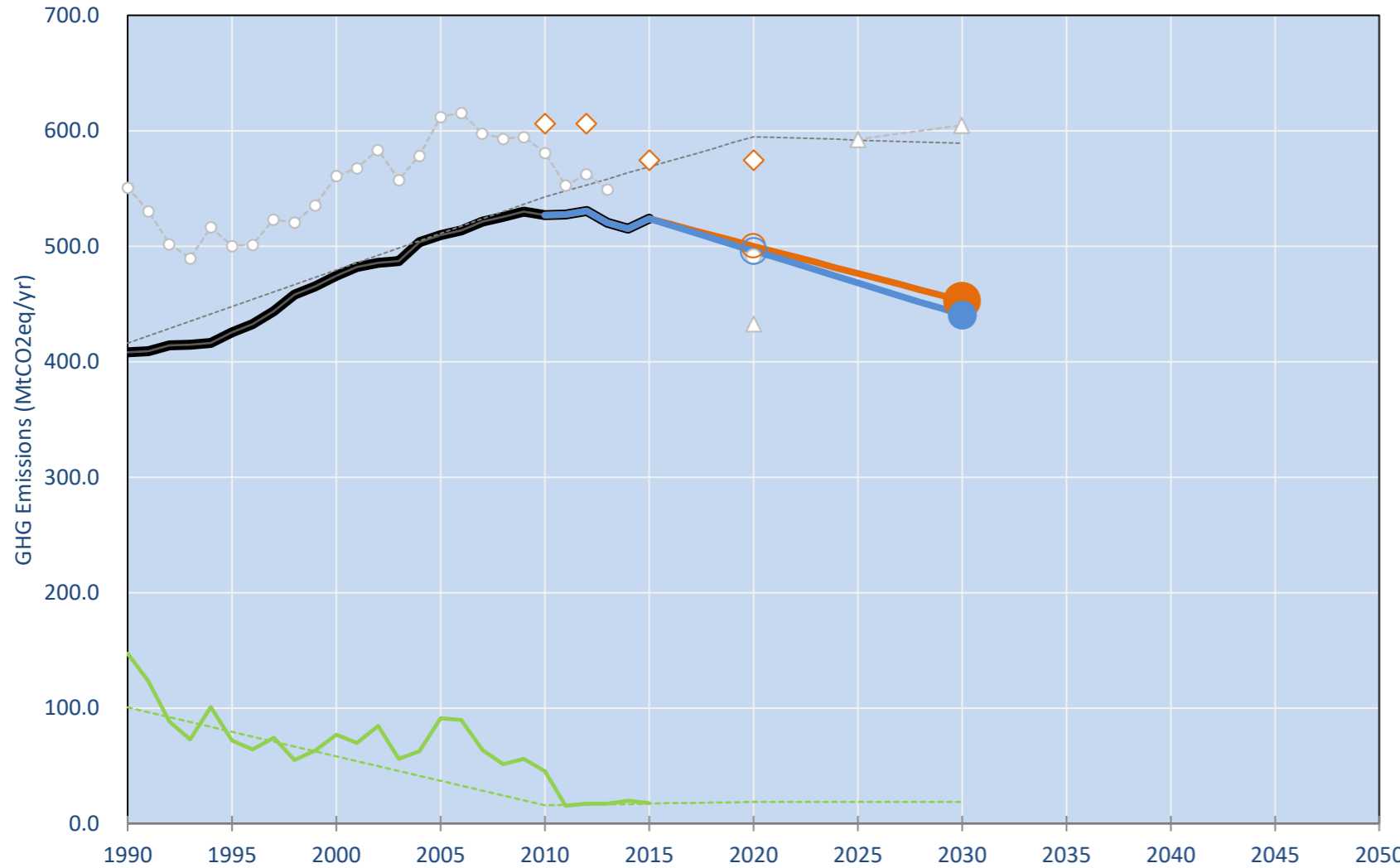
17.4t #12

15.7t #14

NDC: Economy-wide target to reduce greenhouse gas emissions by 26-28% below 2005 levels by 2030. (GWP AR4)

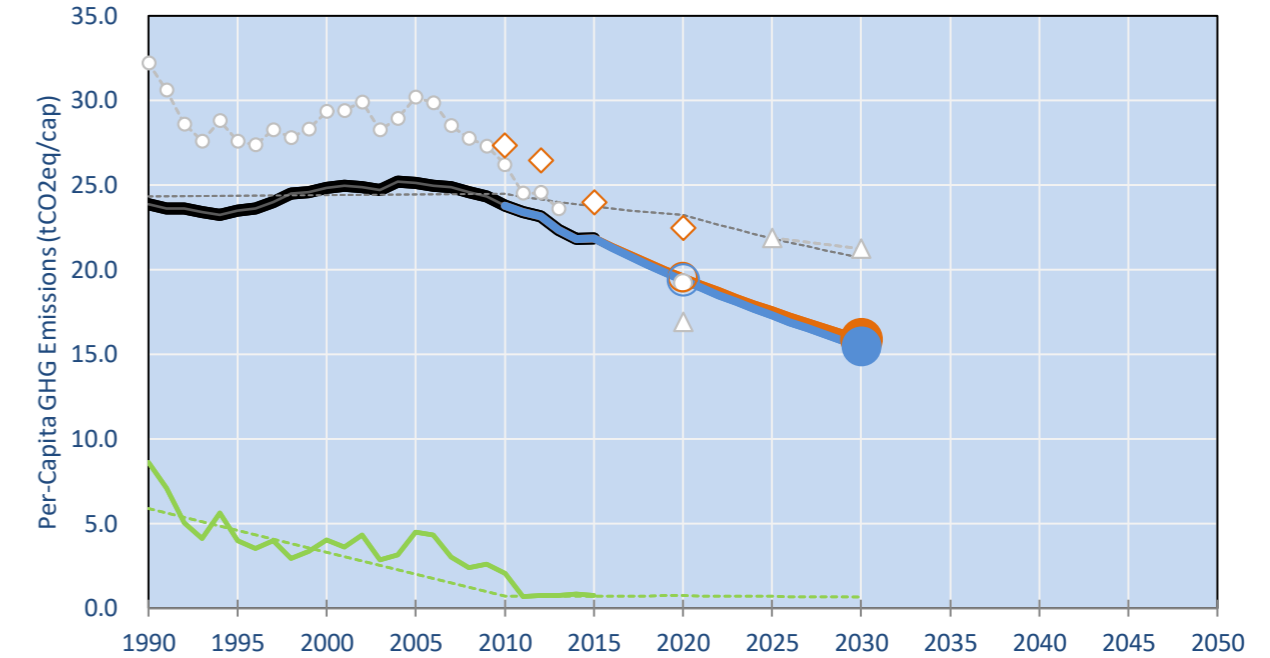
INDC Submitted: 11/08/2015

GHG Emissions

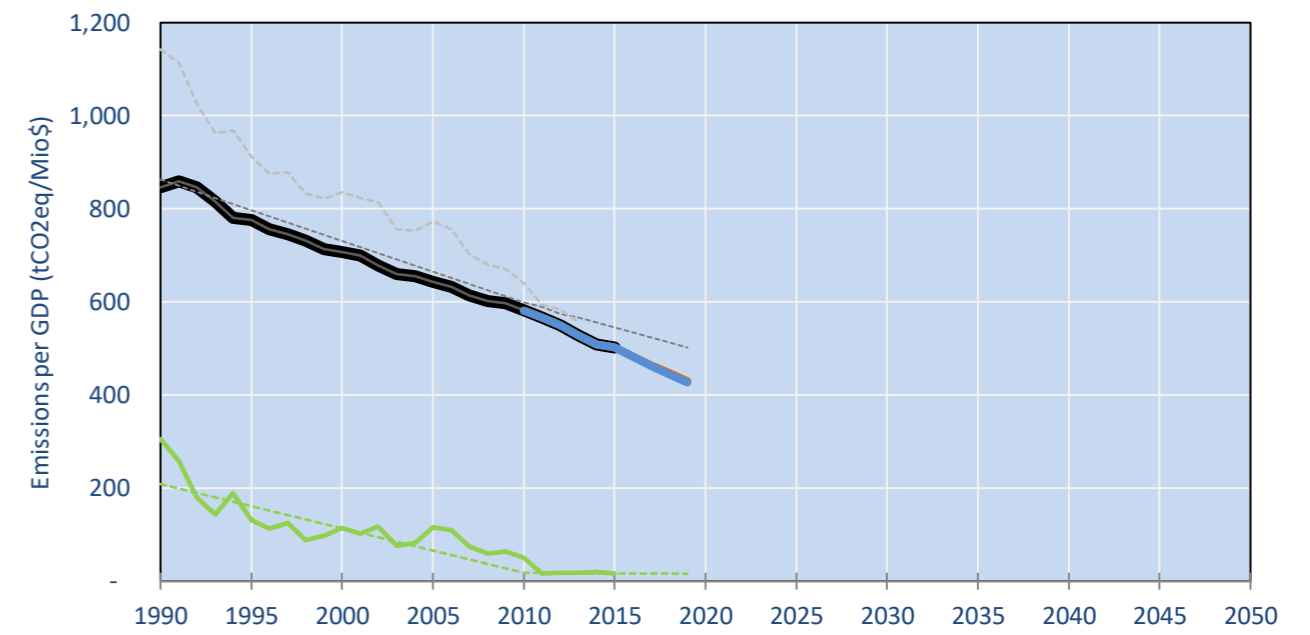


- Reference Total GHG excl. LULUCF
- Historical Covered Emissions, incl. LULUCF, if covered.
- LOW INDC Covered Emissions, incl. LULUCF if covered
- LOW INDC Covered + Non-Covered Emissions, excl. LULUCF
- HIGH INDC Covered Emissions, incl. LULUCF
- HIGH INDC Covered + Non-Covered Emissions, excl. LULUCF
- WM Total excl. LULUCF Projections
- WM LULUCF Projections
- AUS Kyoto Target
- Total Nat. GHG Inventory (incl. LULUCF)
- Regional/Gas-specific BAU
- Not-covered GHG excl. LULUCF (Region Projection)
- Reference LULUCF Emissions
- LOW INDC Levels
- LOW INDC Covered Emissions, excl. LULUCF
- HIGH INDC Levels
- HIGH INDC Covered Emissions, excl. LULUCF
- LOW Cancun Pledges
- HIGH Cancun Pledges
- KP and Australian -15% 2020 Target
- Australian -25% Target

Per-Capita Emissions



GHG Emissions per GDP



2015 Total GHG Emissions excl. LULUCF

By Gas:

CO₂ 78.3%
CH₄ 16.2%
N₂O 3.7%
F-gases 1.8%

By Sector:

Cat. 1 Energy 80.5%
Cat. 2, 3, 6 & 7 5.9%
Cat. 4. Agriculture 11.8%
F-gases 1.8%

GHG Emissions

	1990	2000	2005	2010	2015	2020	2025	2030	
(MtCO ₂ eq/yr in GWP SAR)						low	high	low	high
Assumed LULUCF Accounting Credits (-)/Debits (+)	-	-	-	-	-	22	22	-	-
NDC covered LULUCF Emissions	-	-	-	-	-	-	-	-	-
NDC covered Emissions excl. LULUCF	408	474	510	527	524	500	496	476	468
Total GHG excl. LULUCF	408	474	510	527	524	500	496	476	468
Total GHG incl. LULUCF	555	551	601	572	541	519	515	495	487

Relative GHG Emissions

	1990	2000	2005	2010	2015	2020	2025	2030	
Total excl. LULUCF						low	high	low	high
Relative 1990	100%	116%	125%	129%	128%	123%	122%	117%	115%
Relative 2000	86%	100%	107%	111%	110%	105%	105%	100%	99%
Relative 2005	80%	93%	100%	103%	103%	98%	97%	94%	92%
Relative 2010	77%	90%	97%	100%	99%	95%	94%	90%	89%
Relative 2015	78%	91%	97%	101%	100%	95%	95%	91%	89%

Per-Capita Emissions

	1990	2000	2005	2010	2015	2020	2025	2030	
Total excl. LULUCF						low	high	low	high
Population (Mio)	17	19	20	22	24	26	26	27	27
Per-Capita Emissions (tCO ₂ eq/cap)	23.9	24.8	25.1	23.8	21.9	19.5	19.4	17.6	17.3
Relative 1990	100%	104%	105%	100%	92%	82%	81%	74%	72%
Relative 2000	96%	100%	101%	96%	88%	79%	78%	71%	70%
Relative 2005	95%	99%	100%	95%	87%	78%	77%	70%	69%
Relative 2010	100%	104%	106%	100%	92%	82%	81%	74%	73%
Relative 2015	109%	114%	115%	109%	100%	89%	89%	81%	79%

Data Sources:

Cat1_CO2	PRIMAPHIST17	Cat5A1_CO2	UNFCCC CRF + Nat. Comms.
Cat2367_CO2	PRIMAPHIST17	Cat5A2_CO2	UNFCCC CRF + Nat. Comms.
Cat4_CO2	PRIMAPHIST17	Cat5LtoNonFL_CO2	UNFCCC CRF + Nat. Comms.
Cat5_CO2	COUNTRY-SPECIFIC USER DATA	Cat5GCMCMWM_C	UNFCCC CRF + Nat. Comms.
Cat1_CH4	PRIMAPHIST17	Cat5A1ForestFires	UNFCCC Cat5 + EDGAR(IPCC Database)
Cat2367_CH4	PRIMAPHIST17	Cat5A1HWP_CO2	UNFCCC CRF + Nat. Comms.
Cat4_CH4	PRIMAPHIST17	Cat5bisA_CO2	UNFCCC CRF + NATCOMM.
Cat5_CH4	PRIMAPHIST17	Cat5bisB_CO2	UNFCCC CRF + NATCOMM.
Cat1_N2O	PRIMAPHIST17	Cat5bisC_CO2	UNFCCC CRF + NATCOMM.
Cat2367_N2O	PRIMAPHIST17	Cat5bisD_CO2	UNFCCC CRF + NATCOMM.
Cat4_N2O	PRIMAPHIST17	Cat5bisE_CO2	UNFCCC CRF + NATCOMM.
Cat5_N2O	PRIMAPHIST17	PRO_WM_Cat5_G	COUNTRY-SPECIFIC USER DATA
Cat0_HFCs	PRIMAPHIST17	Metric	GWP SAR
Cat0_PFCs	PRIMAPHIST17		
Cat0_SF6	PRIMAPHIST17		
Population	UN 2015 Population Projections MEDIUM		
GDP	IMF WEO 2015, PPP adjusted GDP, constant 2009 prices...		
	IPCC WG3 Scenario IMAGE AMPERE2-550-FullTech-HST		
	PRIMAPHIST16 description: www.pik-potsdam.de/primap-live/primap-hist/		
	Gratefully acknowledged in particular: PRIMAP, CAIT, CDIAC, EDGAR, IPCC, IEA, UNEP GAP Team, AMPERE Team and comments on earlier versions, in particular by Giacomo Grassi. Errors and misjudgements are our own. Malte Meinshausen & Ryan Alexander; The "Fiji COP23" Edition was enabled through support via the BMUB project UM14 41 4060		
	This Factsheet is available at www.climatecollege.unimelb.edu.au/indc-factsheets. Check out as well: www.climateactiontracker.org, www.mitigation-contributions.org, cait.wri.org, infographics.pbl.nl/indc, live.primap.org, www.unep.org/climatechange/pledgepipeline, and our twitter feed @ClimateCollege		
		climatecollege.unimelb.edu.au	
		AUSTRALIAN-GERMAN CLIMATE & ENERGY COLLEGE	

Various 'fair' contributions for a global 'least-cost' 2°C path (total incl. LULUCF):

2025 rel. 2010:

LEADER	-41%
CDC	-18%
ECPC50	-40%
ECPC90	-31%
GDR	-45%
INDC HIGH	-15%
INDC LOW	-13%

2030 rel. 2010:

LEADER	-66%
CDC	-30%
ECPC50	-65%
ECPC90	-52%
GDR	-61%
INDC HIGH	-20%
INDC LOW	-18%

More info on www.mitigation-contributions.org

"Fair" contributions for a global 'least-cost' 2°C track:

LEADER	Leader
CDC	Common-but-diff. per-cap. convergence
ECPC50	Eq. cum. Per-capita since 1950
ECPC90	Eq. cum. Per-capita since 1990
GDR	Greenhouse Development Rights
#N/A	No available data