

Shown: 2025 & 2030: Min/max of unconditional and conditional targets

Shown are averages for low and high or conditional and unconditional INDCs and their inter-extrapolations

Paris Agreement ratified on: 23/11/2016

Per-Capita Emissions in 2030 rel. 2015 (excl. LULUCF):



-53%

Comoros

NDC 2025

NDC 2030

2015 World Rank

2025 World Rank

2030 World Rank

0% rel. BAU of 0.4 Mt

0% rel. BAU of 0.5 Mt

Share of World Emissions excl. LULUCF (Rank):

0.0% #174

0.0% #180

0.0% #180

-69% rel. BAU of 0.4 Mt

-84% rel. BAU of 0.5 Mt

Per-Capita Emissions (tCO2eq/cap)

0.9t #191

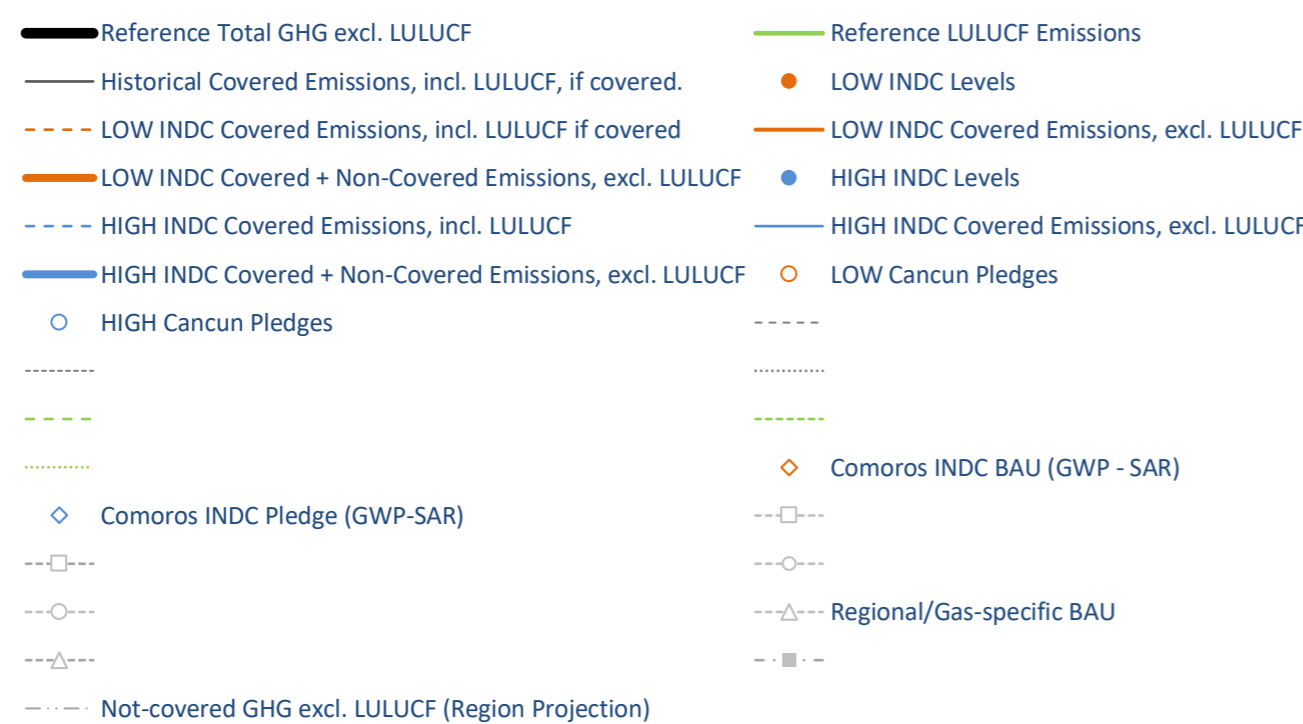
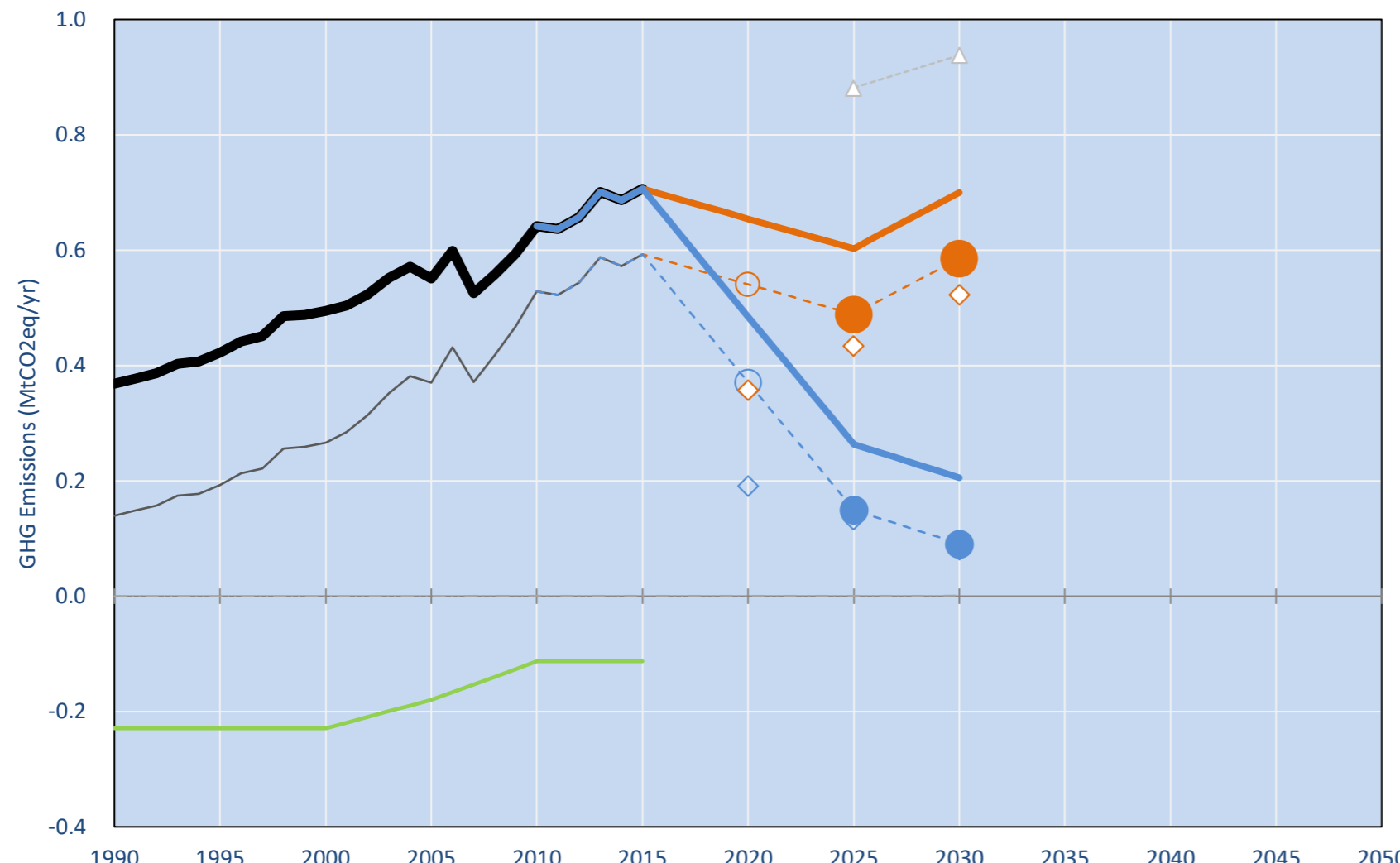
0.4t #197

0.4t #196

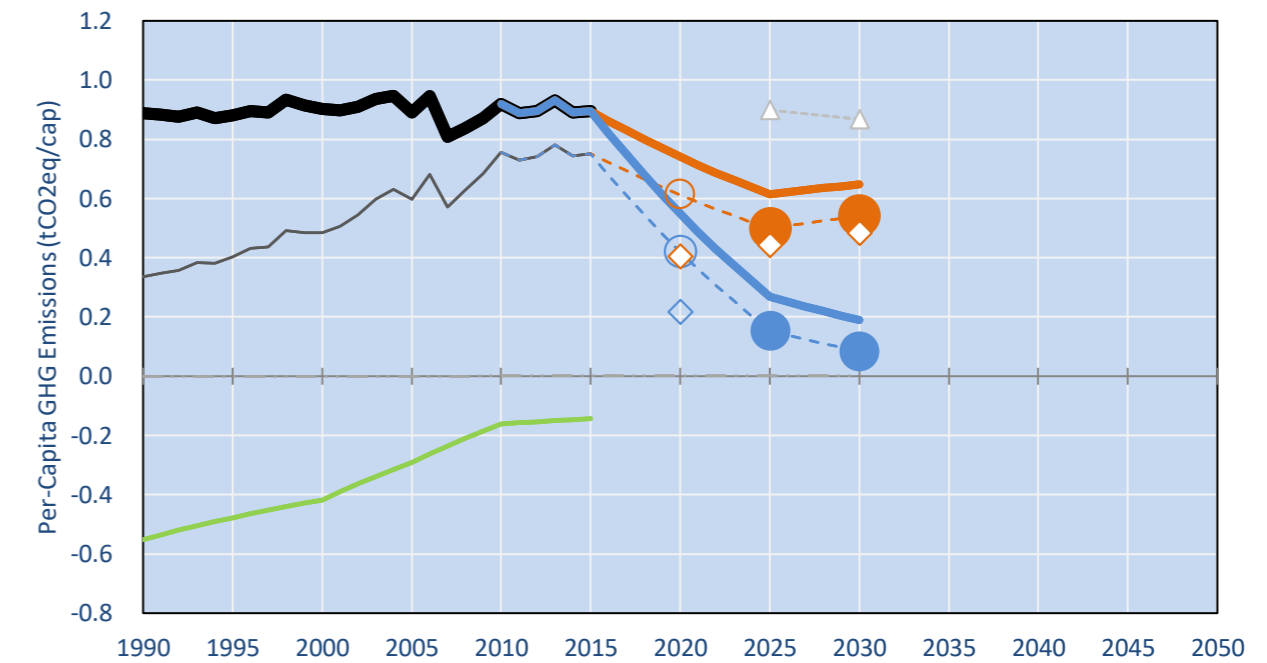
NDC: Conditional: Reduce GHG emissions in 2030 by about 84% compared to BAU. (GWP SAR)

INDC Submitted: 17/09/2015

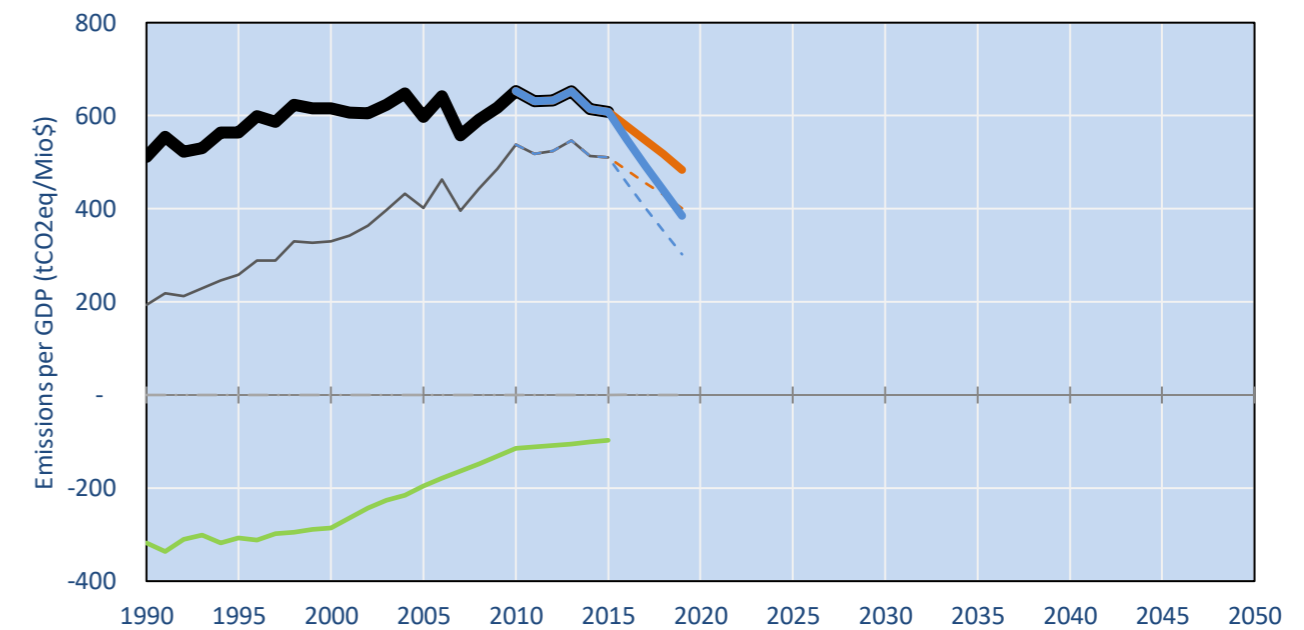
GHG Emissions



Per-Capita Emissions

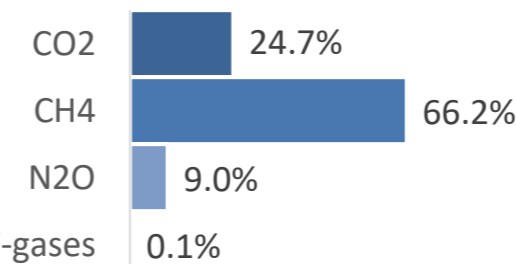


GHG Emissions per GDP

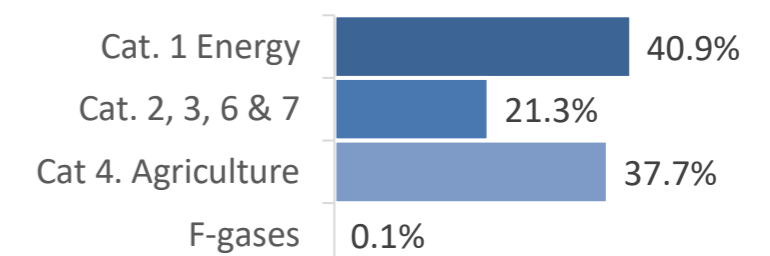


2015 Total GHG Emissions excl. LULUCF

By Gas:



By Sector:



GHG Emissions

	1990	2000	2005	2010	2015	2020		2025		2030	
(MtCO2eq/yr in GWP AR4)						low	high	low	high	low	high
Assumed LULUCF Accounting Credits (-)/Debits (+)											
NDC covered LULUCF Emissions	0	0	0	0	0	0	0	0	0	0	0
NDC covered Emissions excl. LULUCF	0	0	1	1	1	1	0	1	0	1	0
Total GHG excl. LULUCF	0	0	1	1	1	1	0	1	0	1	0
Total GHG incl. LULUCF	0	0	0	1	1	1	0	0	0	1	0

Relative GHG Emissions

	1990	2000	2005	2010	2015	2020		2025		2030	
Total excl. LULUCF						low	high	low	high	low	high
Relative 1990	100%	134%	149%	174%	192%	178%	132%	164%	71%	190%	56%
Relative 2000	74%	100%	111%	130%	143%	132%	98%	122%	53%	141%	41%
Relative 2005	67%	90%	100%	117%	128%	119%	88%	109%	48%	127%	37%
Relative 2010	57%	77%	86%	100%	110%	102%	76%	94%	41%	109%	32%
Relative 2015	52%	70%	78%	91%	100%	93%	69%	85%	37%	99%	29%

Per-Capita Emissions

	1990	2000	2005	2010	2015	2020		2025		2030	
Total excl. LULUCF						low	high	low	high	low	high
Population (Mio)	0	1	1	1	1	1	1	1	1	1	1
Per-Capita Emissions (tCO2eq/cap)	0.9	0.9	0.9	0.9	0.9	0.7	0.5	0.6	0.3	0.6	0.2
Relative 1990	100%	102%	100%	103%	101%	83%	62%	69%	30%	73%	21%
Relative 2000	98%	100%	98%	102%	99%	82%	61%	68%	30%	72%	21%
Relative 2005	100%	102%	100%	103%	101%	83%	62%	69%	30%	73%	21%
Relative 2010	97%	98%	97%	100%	98%	81%	60%	67%	29%	70%	21%
Relative 2015	99%	101%	99%	103%	100%	83%	61%	69%	30%	72%	21%

Data Sources:

Cat1_CO2	PRIMAPHIST17	Cat5A1_CO2	UNFCCC CRF + Nat. Comms.
Cat2367_CO2	COUNTRY-SPECIFIC USER DATA	Cat5A2_CO2	UNFCCC CRF + Nat. Comms.
Cat4_CO2	COUNTRY-SPECIFIC USER DATA	Cat5LtoNonFL_CO2	UNFCCC CRF + Nat. Comms.
Cat5_CO2	PRIMAPHIST17	Cat5GMCMWMM_C	UNFCCC CRF
Cat1_CH4	PRIMAPHIST17	Cat5A1ForestFires	UNFCCC Cat5 + EDGAR(IPCC Database)
Cat2367_CH4	PRIMAPHIST17	Cat5A1HWP_CO2	UNFCCC CRF + Nat. Comms.
Cat4_CH4	PRIMAPHIST17	Cat5bisA_CO2	COUNTRY-SPECIFIC USER DATA
Cat5_CH4	PRIMAPHIST17	Cat5bisB_CO2	COUNTRY-SPECIFIC USER DATA
Cat1_N2O	PRIMAPHIST17	Cat5bisC_CO2	COUNTRY-SPECIFIC USER DATA
Cat2367_N2O	PRIMAPHIST17	Cat5bisD_CO2	COUNTRY-SPECIFIC USER DATA
Cat4_N2O	PRIMAPHIST17	Cat5bisE_CO2	COUNTRY-SPECIFIC USER DATA
Cat5_N2O	PRIMAPHIST17	Cat5bisF_CO2	COUNTRY-SPECIFIC USER DATA
Cat0_HFCs	PRIMAPHIST17	Cat5bisG_CO2	UNFCCC Annex I Reports
Cat0_PFCs	PRIMAPHIST17	Metric	GWP AR4
Cat0_SF6	PRIMAPHIST17		
Population	UN 2015 Population Projections MEDIUM		
GDP	IMF WEO 2015, PPP adjusted GDP, constant 2009 prices...		
	IPCC WG3 Scenario IMAGE AMPERE2-550-FullTech-HST		
	PRIMAPHIST16 description: www.pik-potsdam.de/primap-live/primap-hist/		
	Gratefully acknowledged in particular: PRIMAP, CAIT, CDIAC, EDGAR, IPCC, IEA, UNEP Gap Team, AMPERE Team and comments on earlier versions, in particular by Giacomo Grassi. Errors and misjudgements are our own. Malte Meinshausen & Ryan Alexander; The "Fiji COP23" Edition was enabled through support via the BMUB project UM14 41 4060		
	This Factsheet is available at www.climatecollege.unimelb.edu.au/indc-factsheets. Check out as well: www.climateactiontracker.org, www.mitigation-contributions.org, cait.wri.org, infographics.pbl.nl/indc, live.primap.org, www.unep.org/climatechange/pledgepipeline, and our twitter feed @ClimateCollege		

climatecollege.unimelb.edu.au



Various 'fair' contributions for a global 'least-cost' 2°C path (total incl. LULUCF):

2025 rel. 2010:		2030 rel. 2010:	
LEADER	#N/A	LEADER	#N/A
CDC	#N/A	CDC	#N/A
ECPC50	#N/A	ECPC50	#N/A
ECPC90	#N/A	ECPC90	#N/A
GDR	#N/A	GDR	#N/A
INDC HIGH	-72%	INDC HIGH	-83%
INDC LOW	-7%	INDC LOW	11%

More info on www.mitigation-contributions.org

"Fair" contributions for a global 'least-cost' 2°C track:
LEADER **Leader**
CDC **Common-but-diff. per-cap. convergence**
ECPC50 **Eq. cum. Per-capita since 1950**
ECPC90 **Eq. cum. Per-capita since 1990**
GDR **Greenhouse Development Rights**
#N/A **No available data**