

Comoros

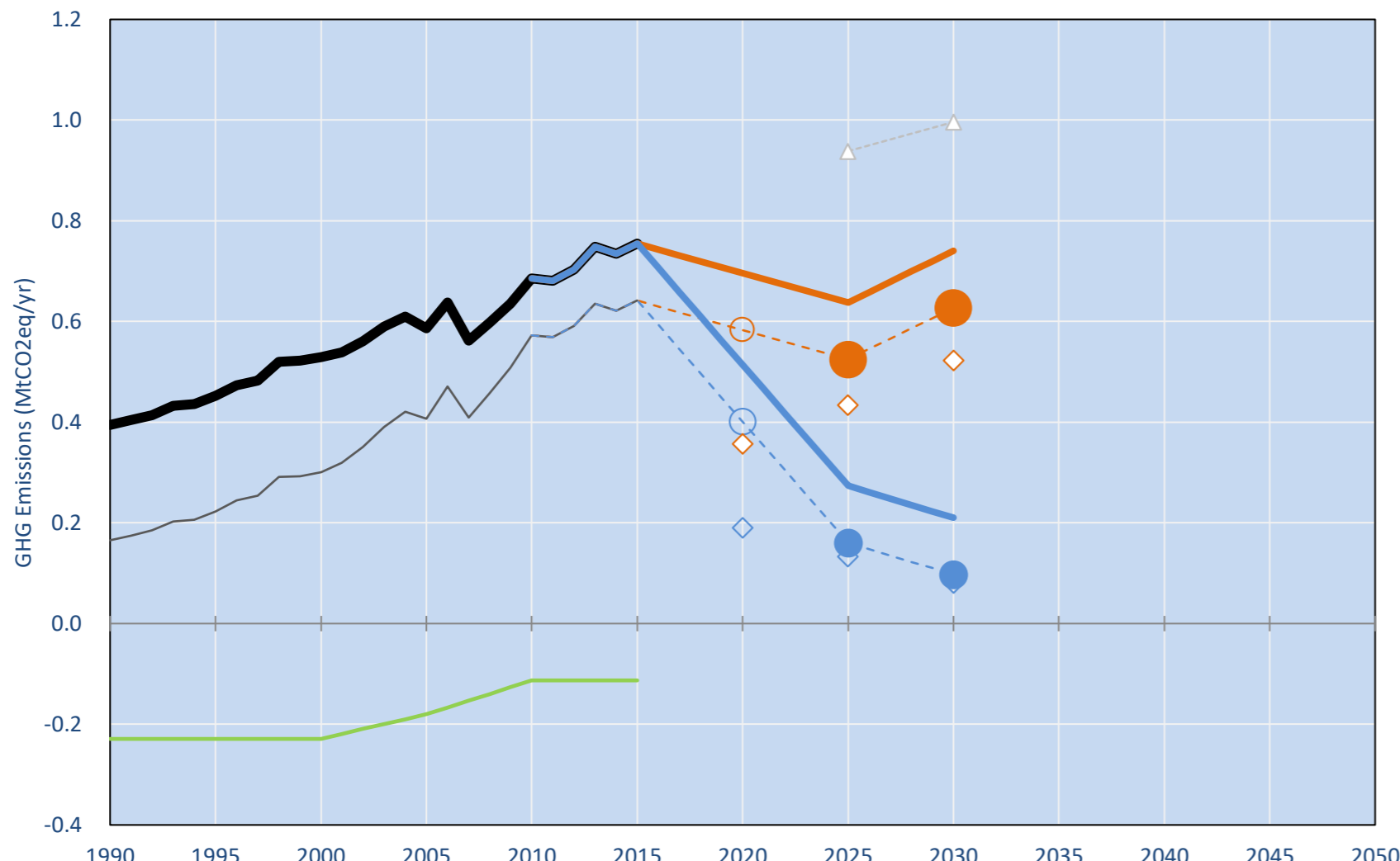
Per-Capita Emissions in 2030 rel. 2015 (excl. LULUCF): **-54%**

NDC 2025	NDC 2030	2015 World Rank	2025 World Rank	2030 World Rank
0% rel. BAU of 0.4 Mt	0% rel. BAU of 0.5 Mt	0.0% #174	0.0% #180	0.0% #180
-69% rel. BAU of 0.4 Mt	-84% rel. BAU of 0.5 Mt	1t #191	0.5t #197	0.4t #196

NDC: Conditional. Reduce GHG emissions in 2030 by about 84% compared to BAU. (GWP SAR)

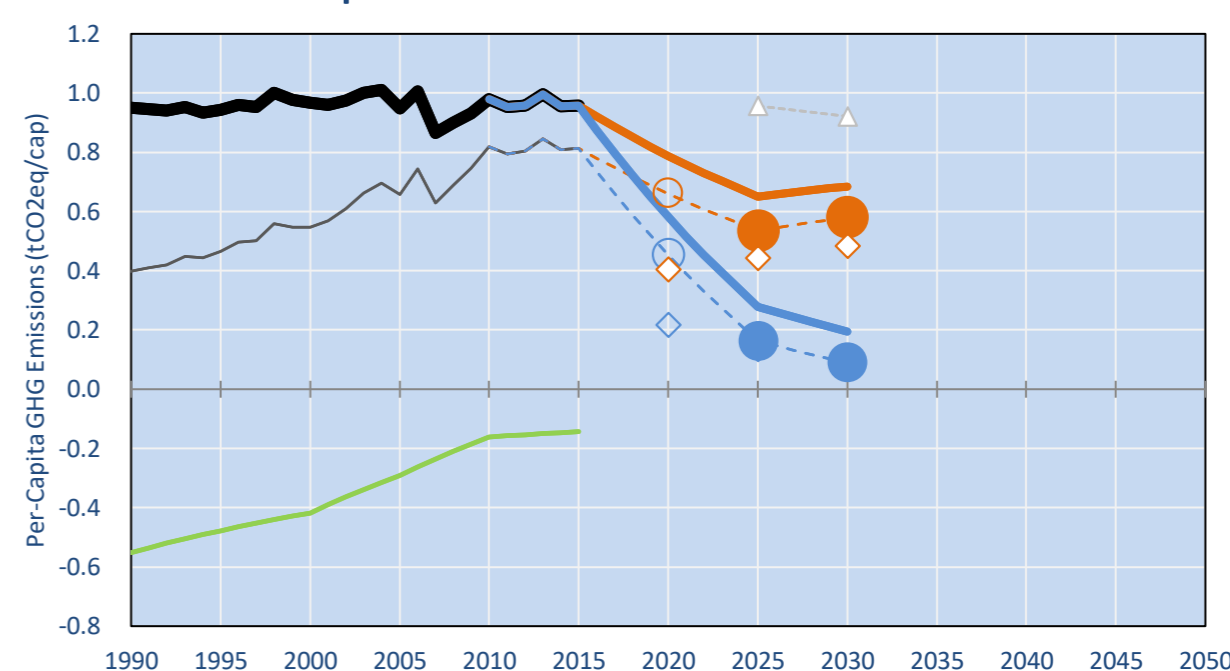
INDC Submitted: 17/09/2015

GHG Emissions

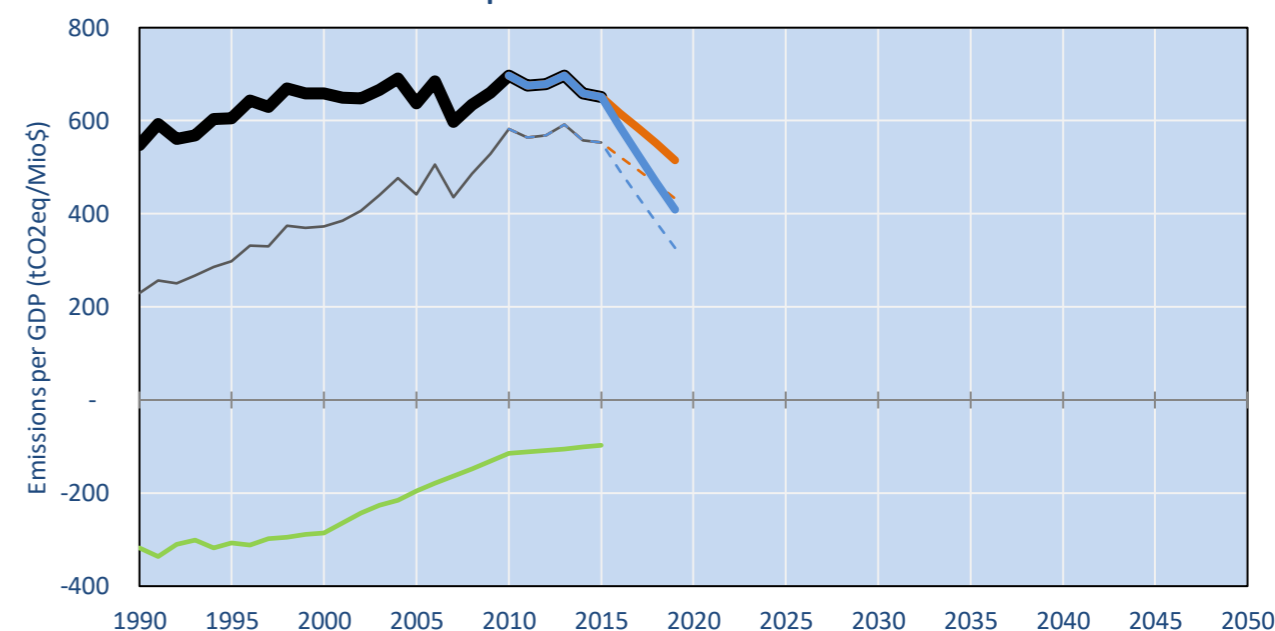


- Reference Total GHG excl. LULUCF
- Historical Covered Emissions, incl. LULUCF, if covered.
- LOW INDC Covered Emissions, incl. LULUCF if covered
- LOW INDC Covered + Non-Covered Emissions, excl. LULUCF
- HIGH INDC Covered Emissions, incl. LULUCF
- HIGH INDC Covered + Non-Covered Emissions, excl. LULUCF
- HIGH Cancun Pledges
- Reference LULUCF Emissions
- LOW INDC Levels
- LOW INDC Covered Emissions, excl. LULUCF
- HIGH INDC Levels
- HIGH INDC Covered Emissions, excl. LULUCF
- LOW Cancun Pledges
- Comoros INDC Pledge (GWP-SAR)
- Regional/Gas-specific BAU
- Not-covered GHG excl. LULUCF (Region Projection)

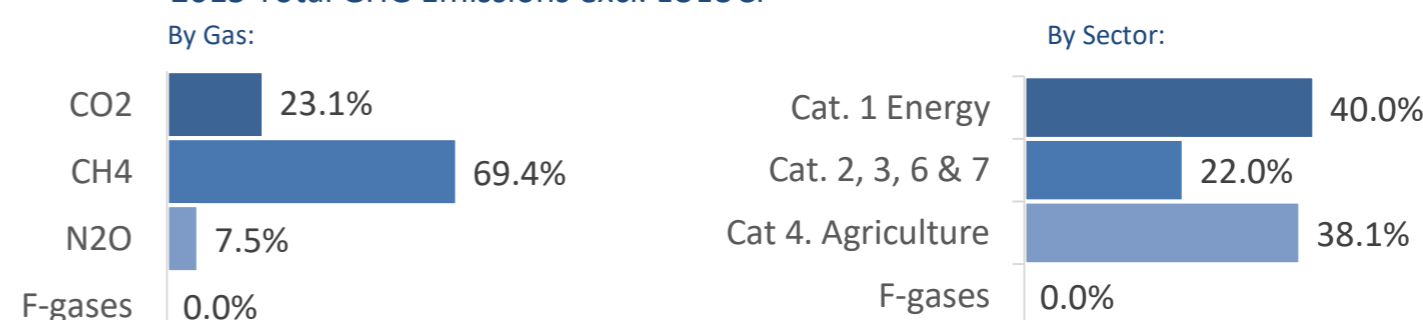
Per-Capita Emissions



GHG Emissions per GDP



2015 Total GHG Emissions excl. LULUCF



GHG Emissions

	1990	2000	2005	2010	2015	2020	2025	2030	
(MtCO2eq/yr in GWP AR5)						low	high	low	high
Assumed LULUCF Accounting Credits (-)/Debits (+)									
NDC covered LULUCF Emissions	0	0	0	0	0	0	0	0	0
NDC covered Emissions excl. LULUCF	0	1	1	1	1	1	1	0	1
Total GHG excl. LULUCF	0	1	1	1	1	1	1	0	1
Total GHG incl. LULUCF	0	0	0	1	1	1	0	1	0

Relative GHG Emissions

	1990	2000	2005	2010	2015	2020	2025	2030	
Total excl. LULUCF						low	high	low	high
Relative 1990	100%	134%	149%	174%	191%	176%	130%	162%	69%
Relative 2000	75%	100%	111%	129%	143%	132%	97%	120%	52%
Relative 2005	67%	90%	100%	117%	129%	119%	88%	109%	47%
Relative 2010	58%	77%	86%	100%	110%	102%	75%	93%	40%
Relative 2015	52%	70%	78%	91%	100%	92%	68%	84%	36%

Per-Capita Emissions

	1990	2000	2005	2010	2015	2020	2025	2030	
Total excl. LULUCF						low	high	low	high
Population (Mio)	0	1	1	1	1	1	1	1	1
Per-Capita Emissions (tCO2eq/cap)	1.0	1.0	0.9	1.0	1.0	0.8	0.6	0.7	0.3
Relative 1990	100%	102%	100%	103%	101%	83%	61%	68%	29%
Relative 2000	98%	100%	98%	101%	99%	82%	60%	67%	29%
Relative 2005	100%	102%	100%	103%	101%	83%	61%	69%	29%
Relative 2010	97%	99%	97%	100%	98%	80%	59%	66%	28%
Relative 2015	99%	101%	99%	102%	100%	82%	61%	68%	29%

Data Sources:

Cat1_CO2	PRIMAPHIST17	Cat5A1_CO2	UNFCCC CRF + Nat. Comms.
Cat2367_CO2	COUNTRY-SPECIFIC USER DATA	Cat5A2_CO2	UNFCCC CRF + Nat. Comms.
Cat4_CO2	COUNTRY-SPECIFIC USER DATA	Cat5LtoNonFL_CO2	UNFCCC CRF + Nat. Comms.
Cat5_CO2	PRIMAPHIST17	Cat5GCMCMWM_C	UNFCCC CRF
Cat1_CH4	PRIMAPHIST17	Cat5A1ForestFires	UNFCCC Cat5 + EDGAR(IPCC Database)
Cat2367_CH4	PRIMAPHIST17	Cat5A1HWP_CO2	UNFCCC CRF + Nat. Comms.
Cat4_CH4	PRIMAPHIST17	Cat5bisA_CO2	COUNTRY-SPECIFIC USER DATA
Cat5_CH4	PRIMAPHIST17	Cat5bisB_CO2	COUNTRY-SPECIFIC USER DATA
Cat1_N2O	PRIMAPHIST17	Cat5bisC_CO2	COUNTRY-SPECIFIC USER DATA
Cat2367_N2O	PRIMAPHIST17	Cat5bisD_CO2	COUNTRY-SPECIFIC USER DATA
Cat4_N2O	PRIMAPHIST17	Cat5bisE_CO2	COUNTRY-SPECIFIC USER DATA
Cat5_N2O	PRIMAPHIST17	Cat5bisF_CO2	COUNTRY-SPECIFIC USER DATA
Cat0_HFCs	PRIMAPHIST17	Cat5bisG_CO2	UNFCCC Annex I Reports
Cat0_PFCs	PRIMAPHIST17	Metric	GWP AR5
Cat0_SF6	PRIMAPHIST17		
Population	UN 2015 Population Projections MEDIUM		
GDP	IMF WEO 2015, PPP adjusted GDP, constant 2009 prices...		
IPCC WG3 Scenario	IMAGE AMPERE2-550-FullTech-HST		
PRIMAPHIST16 description:	www.pik-potsdam.de/primap-live/primap-hist/		
Gratefully acknowledged in particular:	PRIMAP, CAIT, CDIAC, EDGAR, IPCC, IEA, UNEP Gap Team, AMPERE Team and comments on earlier versions, in particular by Giacomo Grassi. Errors and misjudgements are our own. Malte Meinshausen & Ryan Alexander; The "Fiji COP23" Edition was enabled through support via the BMUB project UM14 41 4060		

climatecollege.unimelb.edu.au



Various 'fair' contributions for a global 'least-cost' 2°C path (total incl. LULUCF):

More info on www.mitigation-contributions.org

2025 rel. 2010:	2030 rel. 2010:	2025 rel. 2010:	2030 rel. 2010:
LEADER	#N/A	LEADER	#N/A
CDC	#N/A	CDC	#N/A
ECPC50	#N/A	ECPC50	#N/A
ECPC90	#N/A	ECPC90	#N/A
GDR	#N/A	GDR	#N/A
INDC HIGH	-72%	INDC HIGH	-83%
INDC LOW	-8%	INDC LOW	10%

"Fair" contributions for a global 'least-cost' 2°C track:
LEADER Leader
CDC Common-but-diff. per-cap. convergence
ECPC50 Eq. cum. Per-capita since 1950
ECPC90 Eq. cum. Per-capita since 1990
GDR Greenhouse Development Rights
#N/A No available data