



Congo

Per-Capita Emissions in 2030 rel. 2015 (excl. LULUCF):



-10%

NDC 2025

NDC 2030

2015 World Rank

2025 World Rank

2030 World Rank

0% rel. BAU of 17 Mt

Share of World Emissions excl. LULUCF (Rank):

0.0% #136

0.0% #139

0.0% #138

-48% rel. BAU of 17 Mt

Per-Capita Emissions (tCO2eq/cap)

2.6t #137

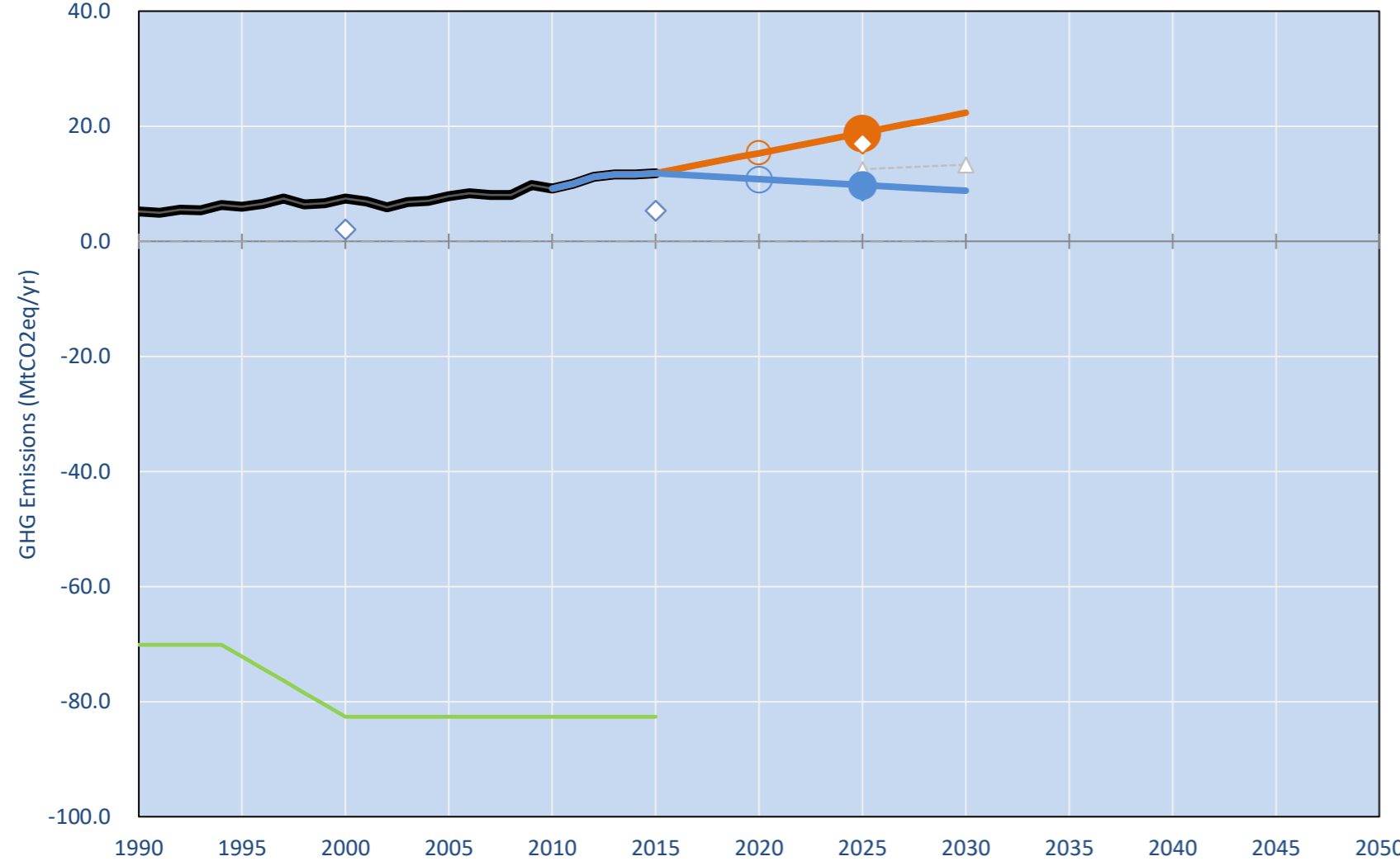
2.4t #139

2.3t #142

NDC: Conditional: At least 48% GHG emission reduction compared to BAU by 2025 and 55% by 2035. (GWP SAR)

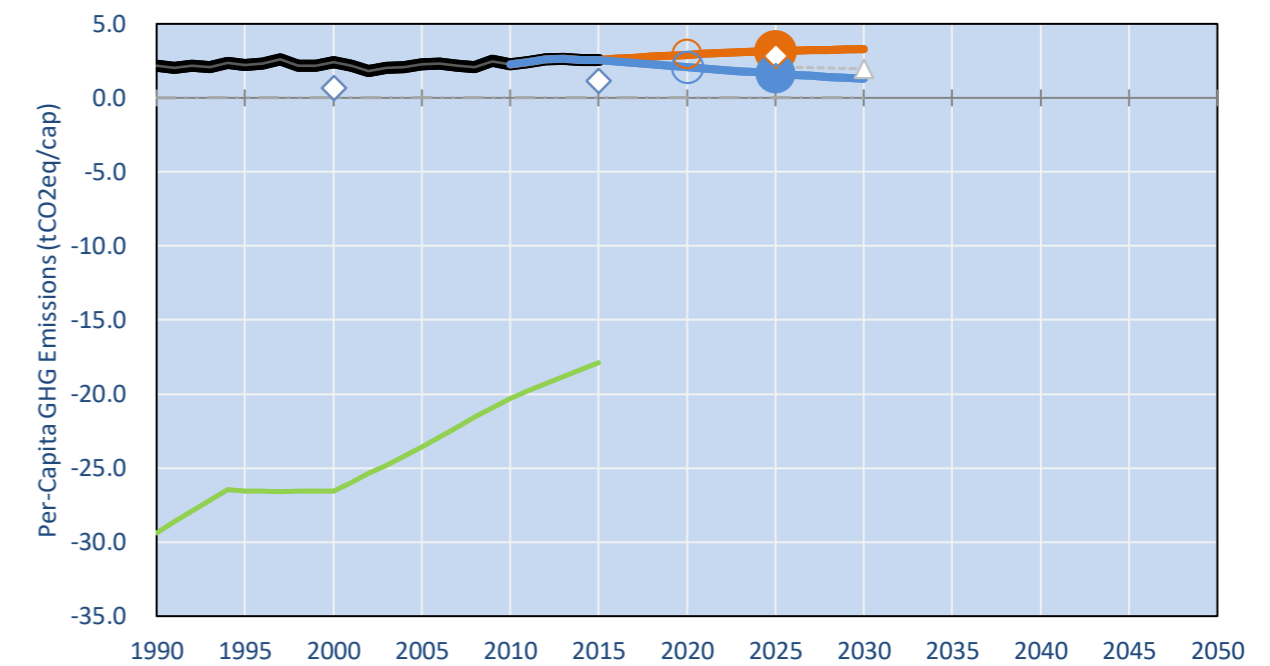
INDC Submitted: 29/09/2015

GHG Emissions

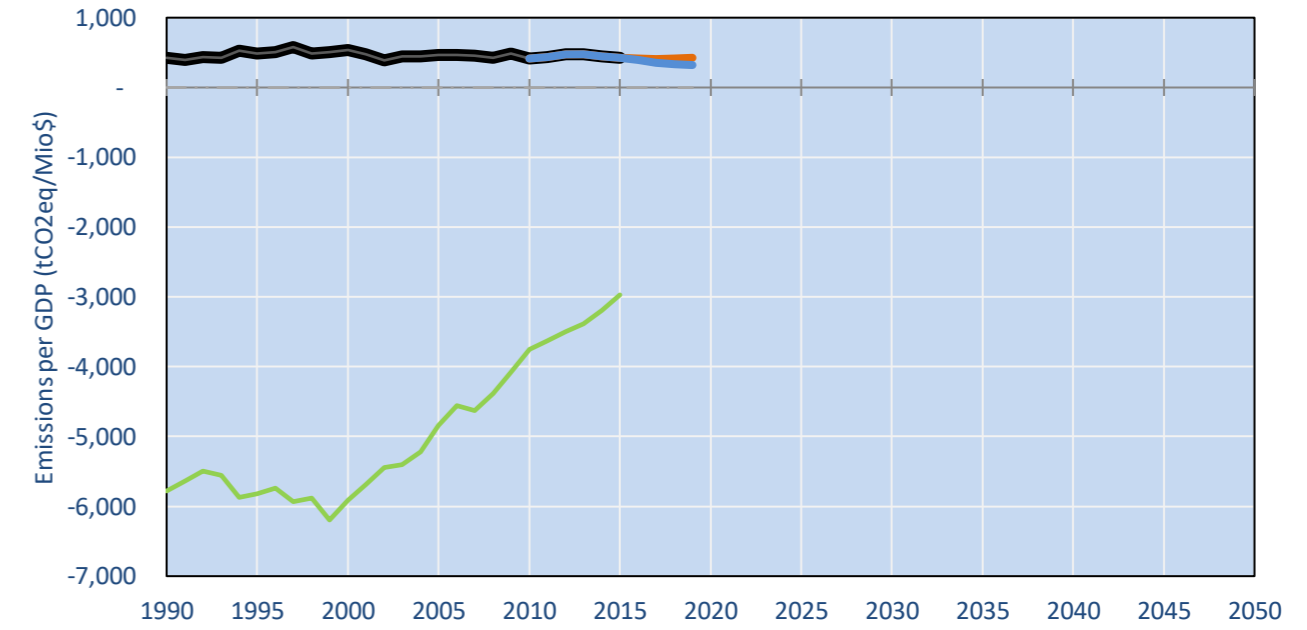


- Reference Total GHG excl. LULUCF
- Historical Covered Emissions, incl. LULUCF, if covered.
- LOW INDC Covered Emissions, incl. LULUCF if covered
- LOW INDC Covered + Non-Covered Emissions, excl. LULUCF
- HIGH INDC Covered Emissions, incl. LULUCF
- HIGH INDC Covered + Non-Covered Emissions, excl. LULUCF
- HIGH Cancun Pledges
- Reference LULUCF Emissions
- LOW INDC Levels
- LOW INDC Covered Emissions, excl. LULUCF
- HIGH INDC Levels
- HIGH INDC Covered Emissions, excl. LULUCF
- LOW Cancun Pledges
- Congo INDC Total excl. LULUCF (GWP SAR)
- Regional/Gas-specific BAU
- Not-covered GHG excl. LULUCF (Region Projection)

Per-Capita Emissions



GHG Emissions per GDP



2015 Total GHG Emissions excl. LULUCF

By Gas:

CO2	26.3%
CH4	62.2%
N2O	11.4%
F-gases	0.1%

By Sector:

Cat. 1 Energy	72.4%
Cat. 2, 3, 6 & 7	10.4%
Cat 4. Agriculture	17.1%
F-gases	0.1%

GHG Emissions

	1990	2000	2005	2010	2015	2020	2025	2030
(MtCO2eq/yr in GWP AR4)						low high	low high	low high
Assumed LULUCF Accounting Credits (-)/Debits (+)								
NDC covered LULUCF Emissions								
NDC covered Emissions excl. LULUCF	5	7	8	9	12	15	11	19
Total GHG excl. LULUCF	5	7	8	9	12	15	11	19
Total GHG incl. LULUCF	65	75	75	73	71	67	72	64

Relative GHG Emissions

	1990	2000	2005	2010	2015	2020	2025	2030
Total excl. LULUCF						low high	low high	low high
Relative 1990	100%	144%	152%	176%	228%	296%	209%	363%
Relative 2000	69%	100%	105%	122%	158%	205%	145%	252%
Relative 2005	66%	95%	100%	116%	150%	195%	137%	239%
Relative 2010	57%	82%	86%	100%	129%	168%	118%	206%
Relative 2015	44%	63%	67%	77%	100%	130%	91%	159%

Per-Capita Emissions

	1990	2000	2005	2010	2015	2020	2025	2030
Total excl. LULUCF						low high	low high	low high
Population (Mio)	2	3	4	4	5	5	6	7
Per-Capita Emissions (tCO2eq/cap)	2.2	2.4	2.2	2.2	2.6	2.9	2.1	3.1
Relative 1990	100%	111%	103%	103%	118%	134%	95%	145%
Relative 2000	90%	100%	94%	94%	107%	121%	86%	131%
Relative 2005	97%	107%	100%	100%	114%	130%	91%	140%
Relative 2010	97%	107%	100%	100%	114%	130%	91%	140%
Relative 2015	85%	94%	88%	88%	100%	114%	80%	123%

Data Sources:

Cat1_CO2	PRIMAPHIST17	Cat5A1_CO2	UNFCCC CRF + Nat. Comms.
Cat2367_CO2	PRIMAPHIST17	Cat5A2_CO2	UNFCCC CRF + Nat. Comms.
Cat4_CO2	PRIMAPHIST17	Cat5LtoNonFL_CO2	UNFCCC CRF + Nat. Comms.
Cat5_CO2	PRIMAPHIST17	Cat5GCMCMWM_C	UNFCCC CRF
Cat1_CH4	PRIMAPHIST17	Cat5A1ForestFires	UNFCCC Cat5 + EDGAR(IPCC Database)
Cat2367_CH4	PRIMAPHIST17	Cat5A1HWP_CO2	UNFCCC CRF + Nat. Comms.
Cat4_CH4	PRIMAPHIST17	Cat5bisA_CO2	UNFCCC CRF + NATCOMM.
Cat5_CH4	PRIMAPHIST17	Cat5bisB_CO2	UNFCCC CRF + NATCOMM.
Cat1_N2O	PRIMAPHIST17	Cat5bisC_CO2	UNFCCC CRF + NATCOMM.
Cat2367_N2O	PRIMAPHIST17	Cat5bisD_CO2	UNFCCC CRF + NATCOMM.
Cat4_N2O	PRIMAPHIST17	Cat5bisE_CO2	UNFCCC CRF + NATCOMM.
Cat5_N2O	PRIMAPHIST17	PRO_WM_Cat5_G	UNFCCC Annex I Reports
Cat0_HFCs	PRIMAPHIST17	Metric	GWP AR4
Cat0_PFCs	PRIMAPHIST17		
Cat0_SF6	PRIMAPHIST17		
Population	UN 2015 Population Projections MEDIUM		
GDP	IMF WEO 2015, PPP adjusted GDP, constant 2009 prices...		
IPCC WG3 Scenario	IMAGE AMPERE2-550-FullTech-HST		
PRIMAPHIST16 description:	www.pik-potsdam.de/primap-live/primap-hist/		

climatecollege.unimelb.edu.au



Various 'fair' contributions for a global 'least-cost' 2°C path (total incl. LULUCF):

2025 rel. 2010:	2030 rel. 2010:
LEADER	#N/A
CDC	#N/A
ECPC50	#N/A
ECPC90	#N/A
GDR	#N/A
INDC HIGH	#N/A
INDC LOW	#N/A



No results shown, as 2010 total incl. LULUCF emissions below zero "Fair" contributions for a global 'least-cost' 2°C track:

LEADER	Leader
CDC	Common-but-diff. per-cap. convergence
ECPC50	Eq. cum. Per-capita since 1950
ECPC90	Eq. cum. Per-capita since 1990
GDR	Greenhouse Development Rights
#N/A	No available data