

# Cote d'Ivoire

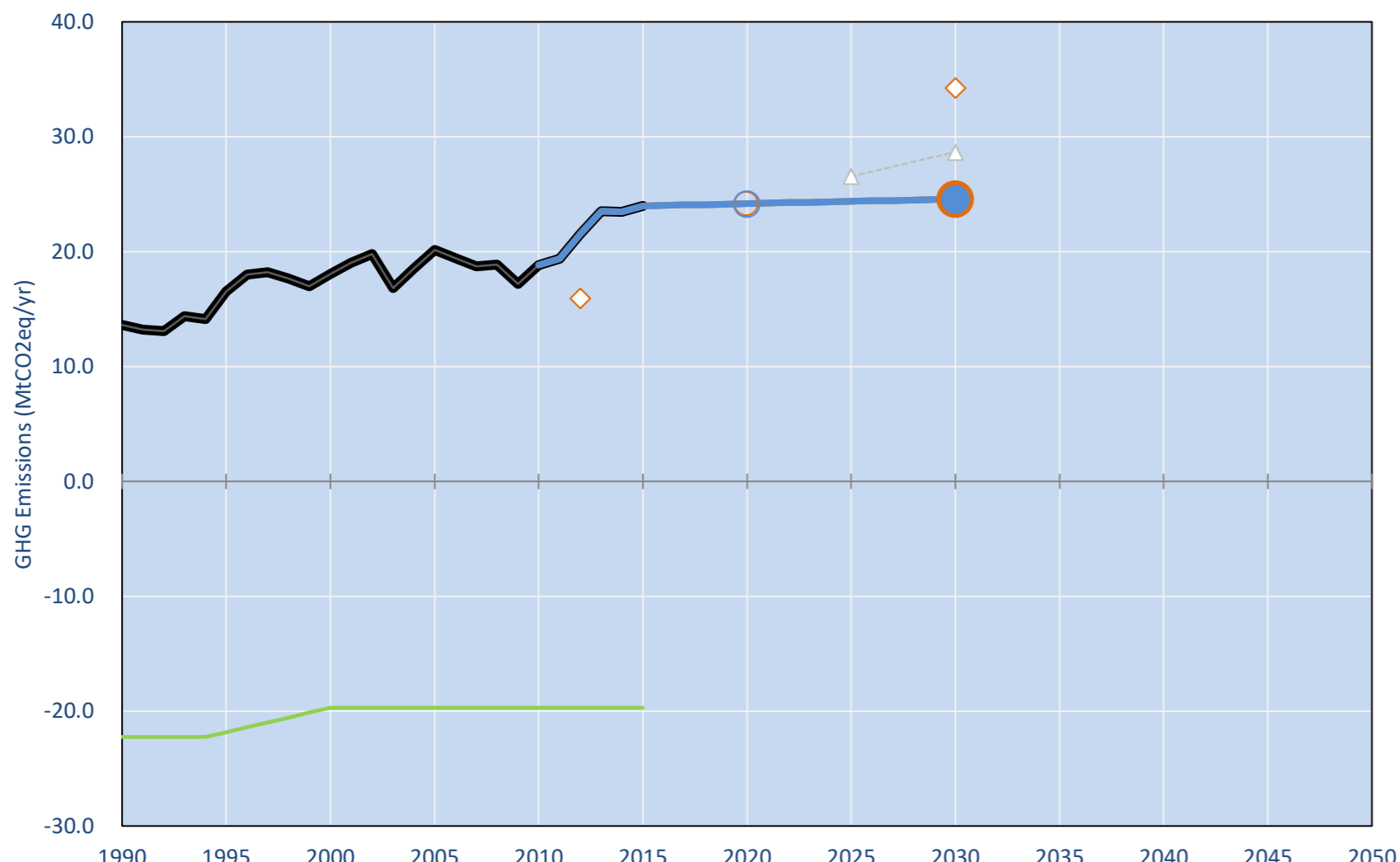
Per-Capita Emissions in 2030 rel. 2015 (excl. LULUCF): **-28%**

NDC 2025	NDC 2030	2015 World Rank	2025 World Rank	2030 World Rank
	-28% rel. BAU of 34.3 Mt	0.1% #113	0.0% #119	0.0% #119
Share of World Emissions excl. LULUCF (Rank):		0.1% #113	0.0% #119	0.0% #119
Per-Capita Emissions (tCO <sub>2</sub> eq/cap)		1.1t #184	0.8t #187	0.8t #190

NDC: 28% reduction of GHG emissions by 2030 compared to BAU. Unconditional target withdrawn 22nd Sept. (GWP SAR)

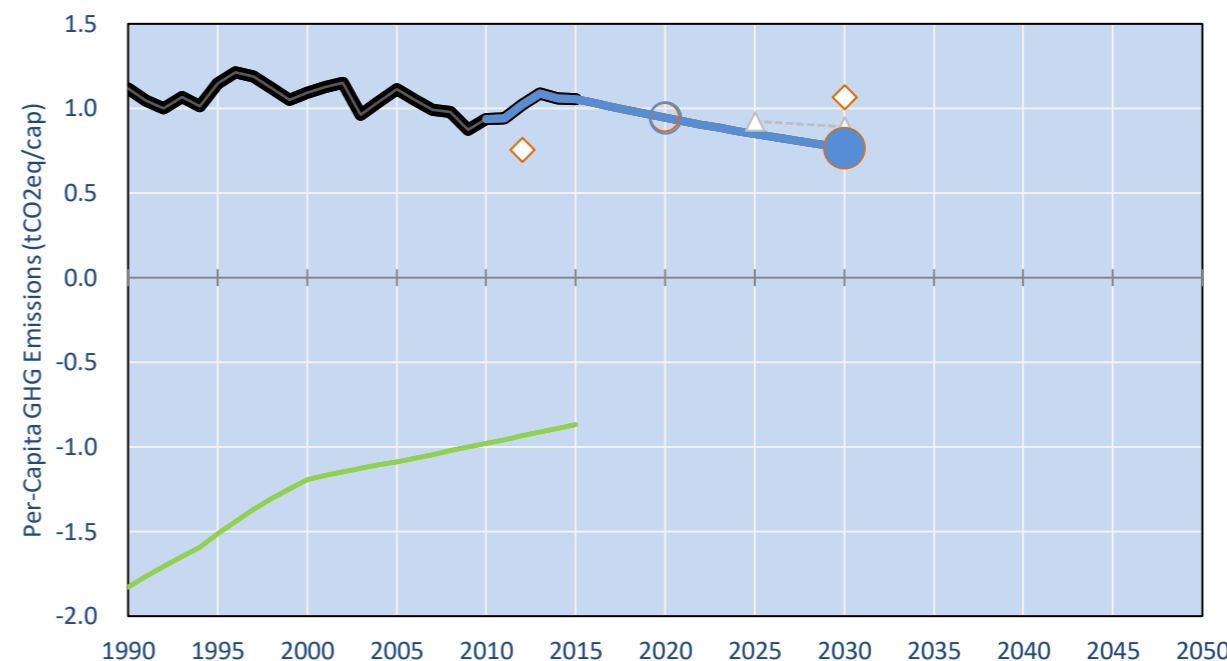
INDC Submitted: 11/09/2015

## GHG Emissions

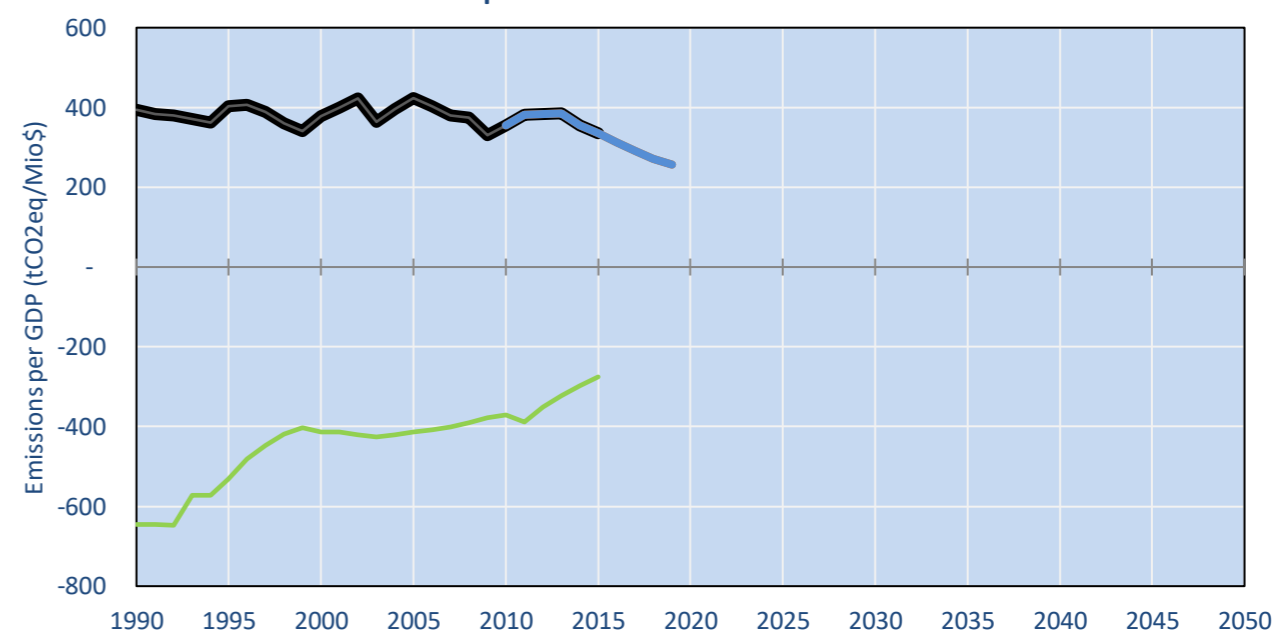


- Reference Total GHG excl. LULUCF
- Historical Covered Emissions, incl. LULUCF, if covered.
- LOW INDC Covered Emissions, incl. LULUCF if covered
- LOW INDC Covered + Non-Covered Emissions, excl. LULUCF
- HIGH INDC Covered Emissions, incl. LULUCF
- HIGH INDC Covered + Non-Covered Emissions, excl. LULUCF
- HIGH Cancun Pledges
- Reference LULUCF Emissions
- LOW INDC Levels
- LOW INDC Covered Emissions, excl. LULUCF
- HIGH INDC Levels
- HIGH INDC Covered Emissions, excl. LULUCF
- LOW Cancun Pledges
- INDC hist. & 2030 BAU
- Regional/Gas-specific BAU
- Not-covered GHG excl. LULUCF (Region Projection)

## Per-Capita Emissions



## GHG Emissions per GDP



## 2015 Total GHG Emissions excl. LULUCF

By Gas:	By Sector:
CO <sub>2</sub> 48.9%	Cat. 1 Energy 61.8%
CH <sub>4</sub> 35.9%	Cat. 2, 3, 6 & 7 17.1%
N <sub>2</sub> O 15.1%	Cat 4. Agriculture 21.1%
F-gases 0.0%	F-gases 0.0%

## GHG Emissions

	1990	2000	2005	2010	2015	2020	2025	2030	
(MtCO <sub>2</sub> eq/yr in GWP SAR)						low	high	low	high
Assumed LULUCF Accounting Credits (-)/Debits (+)									
NDC covered LULUCF Emissions									
NDC covered Emissions excl. LULUCF	14	18	20	19	24	24	24	24	25
Total GHG excl. LULUCF	14	18	20	19	24	24	24	24	25
Total GHG incl. LULUCF	-	9	2	0	1	4	4	5	5

## Relative GHG Emissions

	1990	2000	2005	2010	2015	2020	2025	2030	
Total excl. LULUCF						low	high	low	high
Relative 1990	100%	133%	148%	139%	176%	178%	179%	181%	181%
Relative 2000	75%	100%	112%	104%	133%	134%	135%	136%	136%
Relative 2005	67%	89%	100%	93%	119%	120%	121%	122%	122%
Relative 2010	72%	96%	107%	100%	127%	128%	129%	130%	130%
Relative 2015	57%	75%	84%	79%	100%	101%	102%	103%	103%

## Per-Capita Emissions

	1990	2000	2005	2010	2015	2020	2025	2030	
Total excl. LULUCF						low	high	low	high
Population (Mio)	12	17	18	20	23	26	26	29	32
Per-Capita Emissions (tCO <sub>2</sub> eq/cap)	1.1	1.1	1.1	0.9	1.1	0.9	0.9	0.8	0.8
Relative 1990	100%	98%	100%	84%	95%	85%	85%	76%	68%
Relative 2000	102%	100%	102%	86%	97%	87%	87%	78%	70%
Relative 2005	100%	98%	100%	84%	95%	85%	85%	76%	69%
Relative 2010	119%	117%	119%	100%	113%	101%	101%	91%	82%
Relative 2015	106%	103%	105%	89%	100%	90%	90%	80%	72%

## Data Sources:

Cat1_CO2	PRIMAPHIST17	Cat5A1_CO2	UNFCCC CRF + Nat. Comms.
Cat2367_CO2	PRIMAPHIST17	Cat5A2_CO2	UNFCCC CRF + Nat. Comms.
Cat4_CO2	PRIMAPHIST17	Cat5LtoNonFL_CO2	UNFCCC CRF + Nat. Comms.
Cat5_CO2	PRIMAPHIST17	Cat5GCMCMWM_C	UNFCCC CRF
Cat1_CH4	PRIMAPHIST17	Cat5A1ForestFires	UNFCCC Cat5 + EDGAR(IPCC Database)
Cat2367_CH4	PRIMAPHIST17	Cat5A1HWP_CO2	UNFCCC CRF + Nat. Comms.
Cat4_CH4	PRIMAPHIST17	Cat5bisA_CO2	UNFCCC CRF + NATCOMM.
Cat5_CH4	PRIMAPHIST17	Cat5bisB_CO2	UNFCCC CRF + NATCOMM.
Cat1_N2O	PRIMAPHIST17	Cat5bisC_CO2	UNFCCC CRF + NATCOMM.
Cat2367_N2O	PRIMAPHIST17	Cat5bisD_CO2	UNFCCC CRF + NATCOMM.
Cat4_N2O	PRIMAPHIST17	Cat5bisE_CO2	UNFCCC CRF + NATCOMM.
Cat5_N2O	PRIMAPHIST17	PRO_WM_Cat5_G	UNFCCC Annex I Reports
Cat0_HFCs	PRIMAPHIST17	Metric	GWP SAR
Cat0_PFCs	PRIMAPHIST17		
Cat0_SF6	PRIMAPHIST17		
Population	UN 2015 Population Projections MEDIUM		
GDP	IMF WEO 2015, PPP adjusted GDP, constant 2009 prices...		
IPCC WG3 Scenario	IMAGE   AMPERE2-550-FullTech-HST		
PRIMAPHIST16 description:	www.pik-potsdam.de/primap-live/primap-hist/		
Gratefully acknowledged in particular:	PRIMAP, CAIT, CDIAC, EDGAR, IPCC, IEA, UNEP GAP Team, AMPERE Team and comments on earlier versions, in particular by Giacomo Grassi. Errors and misjudgements are our own. Malte Meinshausen & Ryan Alexander; The "Fiji COP23" Edition was enabled through support via the BMUB project UM14 41 4060		
This Factsheet is available at	www.climatecollege.unimelb.edu.au/indc-factsheets. Check out as well: www.climateactiontracker.org, www.mitigation-contributions.org, cait.wri.org, infographics.pbl.nl/indc, live.primap.org, www.unep.org/climatechange/pledgepipeline, and our twitter feed @ClimateCollege		

climatecollege.unimelb.edu.au



## Various 'fair' contributions for a global 'least-cost' 2°C path (total incl. LULUCF):

2025 rel. 2010:	2030 rel. 2010:	2025 rel. 2010:	2030 rel. 2010:
LEADER	#N/A	LEADER	#N/A
CDC	#N/A	CDC	#N/A
ECPC50	#N/A	ECPC50	#N/A
ECPC90	#N/A	ECPC90	#N/A
GDR	#N/A	GDR	#N/A
INDC HIGH	#N/A	INDC HIGH	#N/A
INDC LOW	#N/A	INDC LOW	#N/A

No results shown, as 2010 total incl. LULUCF emissions below zero  
"Fair" contributions for a global 'least-cost' 2°C track:

- LEADER Leader
- CDC Common-but-diff. per-cap. convergence
- ECPC50 Eq. cum. Per-capita since 1950
- ECPC90 Eq. cum. Per-capita since 1990
- GDR Greenhouse Development Rights
- #N/A No available data