

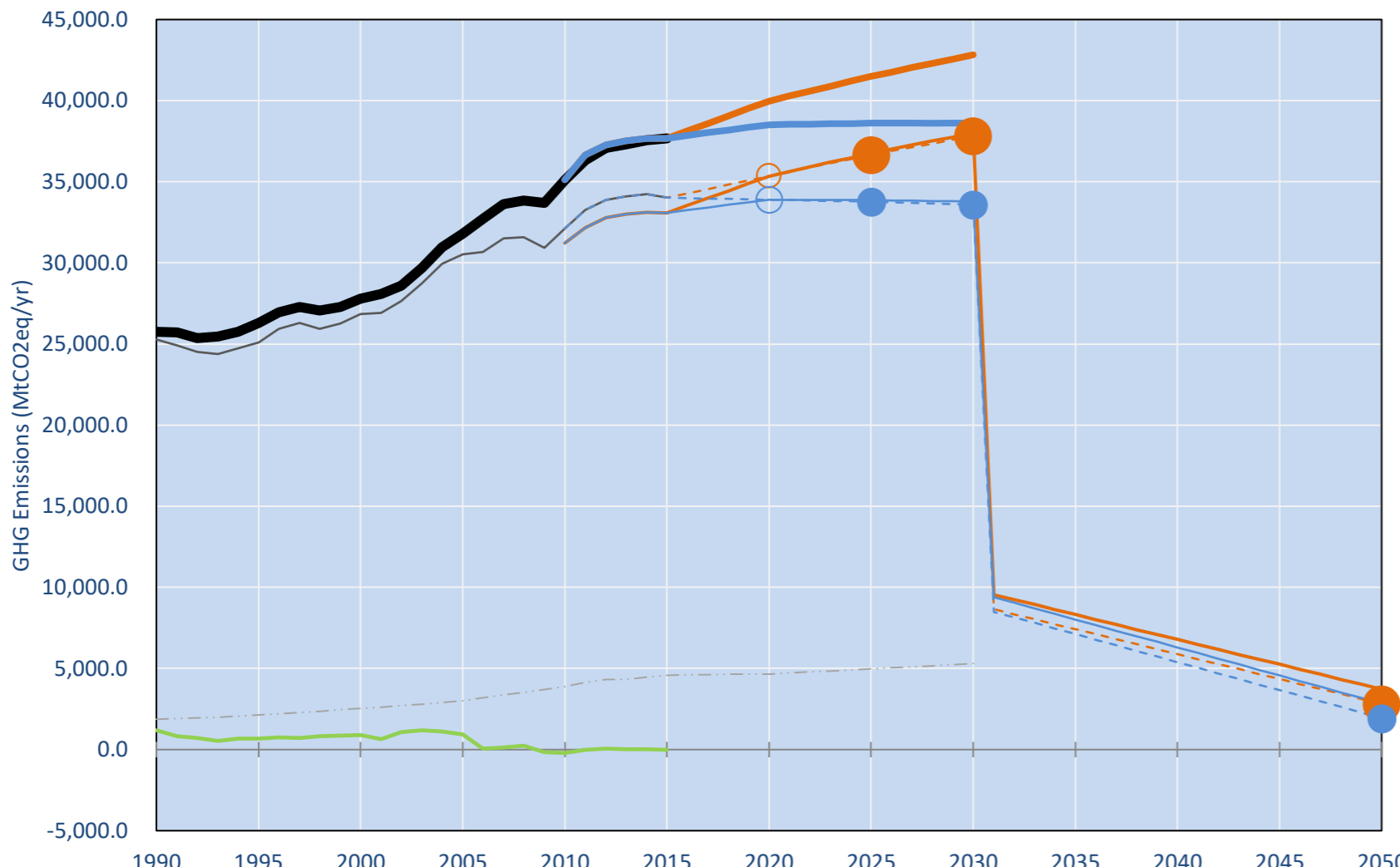
G20

Per-Capita Emissions in 2030 rel. 2015 (excl. LULUCF): **-0%**

	2015	2025	2030
Share of World Emissions excl. LULUCF (Rank):	78.0%	74.7%	73.4%
Per-Capita Emissions (tCO <sub>2</sub> eq/cap)	8t	8t	8t

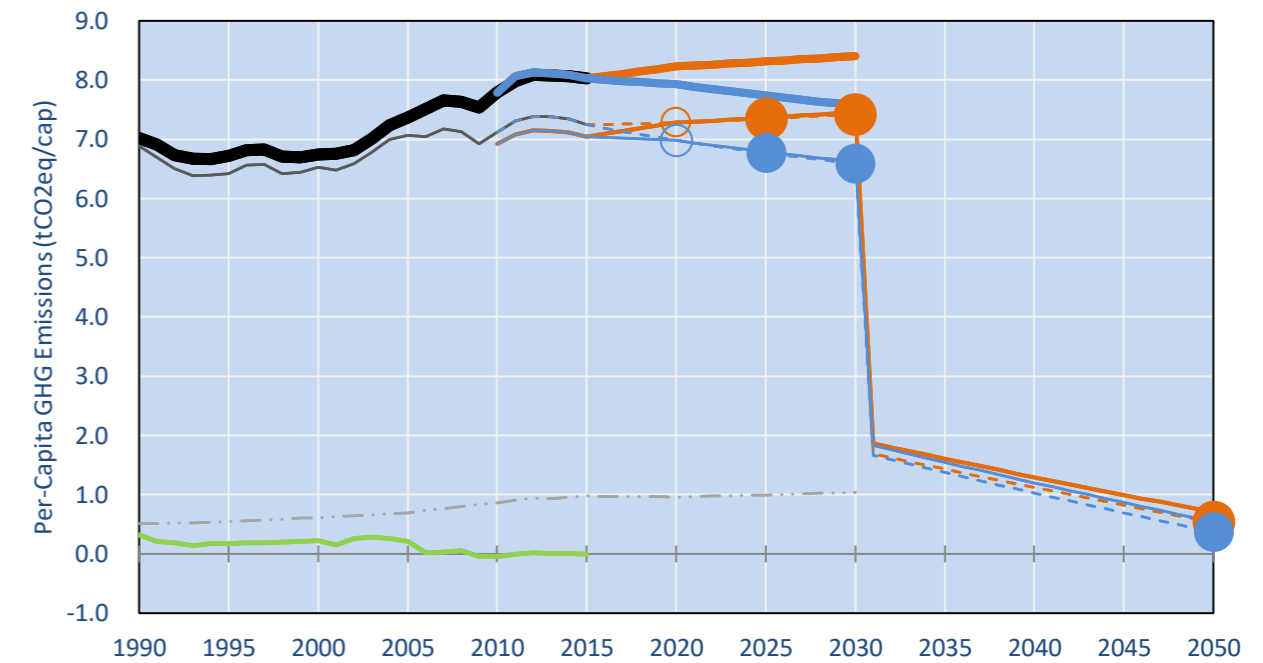
INDC Submitted: 16/02/6744

GHG Emissions

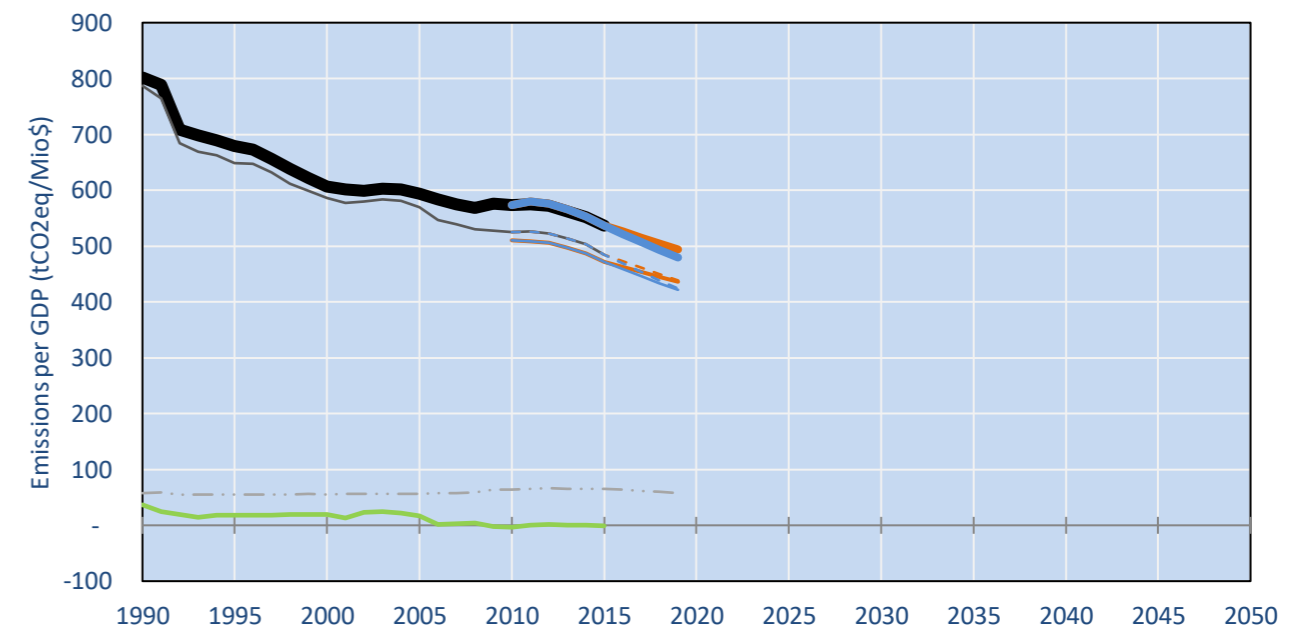


- Reference Total GHG excl. LULUCF
- Historical Covered Emissions, incl. LULUCF, if covered.
- LOW INDC Covered Emissions, incl. LULUCF if covered
- LOW INDC Covered + Non-Covered Emissions, excl. LULUCF
- HIGH INDC Covered Emissions, incl. LULUCF
- HIGH INDC Covered + Non-Covered Emissions, excl. LULUCF
- HIGH Cancun Pledges
- Reference LULUCF Emissions
- LOW INDC Levels
- LOW INDC Covered Emissions, excl. LULUCF
- HIGH INDC Levels
- HIGH INDC Covered Emissions, excl. LULUCF
- LOW Cancun Pledges
- Not-covered GHG excl. LULUCF (Region Projection)

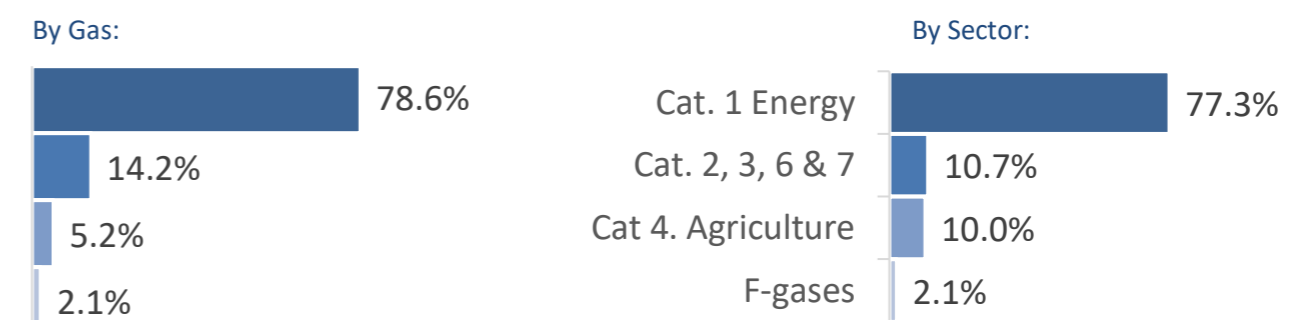
Per-Capita Emissions



GHG Emissions per GDP



2015 Total GHG Emissions excl. LULUCF



GHG Emissions

	1990	2000	2005	2010	2015	2020		2025		2030	
(MtCO <sub>2</sub> eq/yr in GWP AR4)						low	high	low	high	low	high
Assumed LULUCF Accounting Credits (-)/Debits (+)						- 430	- 458	- 632	- 621	- 621	- 621
NDC/INDC covered LULUCF Emissions	1,393	1,592	1,708	885	927	1	1	95	95	192	192
NDC/INDC covered Emissions excl. LULUCF	23,886	25,265	28,810	31,233	33,087	35,342	33,894	36,768	33,872	38,004	33,783
Total GHG excl. LULUCF	25,756	27,786	31,815	35,121	37,675	39,972	38,524	41,500	38,604	42,827	38,606
Total GHG incl. LULUCF	26,934	28,686	32,747	34,911	37,643	38,439	36,991	39,903	37,007	41,156	36,935

Relative GHG Emissions

	1990	2000	2005	2010	2015	2020		2025		2030	
Total excl. LULUCF						low	high	low	high	low	high
Relative 1990	100%	108%	124%	136%	146%	155%	150%	161%	150%	166%	150%
Relative 2000	93%	100%	114%	126%	136%	144%	139%	149%	139%	154%	139%
Relative 2005	81%	87%	100%	110%	118%	126%	121%	130%	121%	135%	121%
Relative 2010	73%	79%	91%	100%	107%	114%	110%	118%	110%	122%	110%
Relative 2015	68%	74%	84%	93%	100%	106%	102%	110%	102%	114%	102%

Per-Capita Emissions

	1990	2000	2005	2010	2015	2020		2025		2030	
Total excl. LULUCF						low	high	low	high	low	high
Population (Mio)	3,669	4,117	4,315	4,511	4,694	4,856	4,856	4,989	4,989	5,096	5,096
Per-Capita Emissions (tCO <sub>2</sub> eq/cap)	7.0	6.7	7.4	7.8	8.0	8.2	7.9	8.3	7.7	8.4	7.6
Relative 1990	100%	96%	105%	111%	114%	117%	113%	118%	110%	120%	108%
Relative 2000	104%	100%	109%	115%	119%	122%	118%	123%	115%	125%	112%
Relative 2005	95%	92%	100%	106%	109%	112%	108%	113%	105%	114%	103%
Relative 2010	90%	87%	95%	100%	103%	106%	102%	107%	99%	108%	97%
Relative 2015	87%	84%	92%	97%	100%	103%	99%	104%	96%	105%	94%

Data Sources:

- Cat1\_CO2 Def: PRIMAPHIST17
- Cat2367\_CO2 Def: PRIMAPHIST17
- Cat4\_CO2 Def: PRIMAPHIST17
- Cat5\_CO2 Def: PRIMAPHIST17
- Cat1\_CH4 Def: PRIMAPHIST17
- Cat2367\_CH4 Def: PRIMAPHIST17
- Cat4\_CH4 Def: PRIMAPHIST17
- Cat5\_CH4 Def: PRIMAPHIST17
- Cat1\_N2O Def: PRIMAPHIST17
- Cat2367\_N2O Def: PRIMAPHIST17
- Cat4\_N2O Def: PRIMAPHIST17
- Cat5\_N2O Def: PRIMAPHIST17
- Cat0\_HFCs Def: PRIMAPHIST17
- Cat0\_PFCs Def: PRIMAPHIST17
- Cat0\_SF6 Def: PRIMAPHIST17
- Population Def: UN 2015 Population Projections MEDIUM
- GDP Def: IMF WEO 2015, PPP adjusted GDP, constant 2009 prices...
- IPCC WG3 Scenario IMAGE | AMPERE2-550-FullTech-HST
- PRIMAPHIST16 description: www.pik-potsdam.de/primap-live/primap-hist/
- Gratefully acknowledged in particular: PRIMAP, CAIT, CDIAC, EDGAR, IPCC, IEA, UNEP GAP Team, AMPERE Team and comments on earlier versions, in particular by Giacomo Grassi. Errors and misjudgements are our own. Malte Meinshausen & Ryan Alexander; The "Fiji COP23" Edition was enabled through support via the BMUB project UM14 41 4060
- This Factsheet is available at www.climatecollege.unimelb.edu.au/indc-factsheets. Check out as well: www.climateactiontracker.org, www.mitigation-contributions.org, cait.wri.org, infographics.pbl.nl/indc, live.primap.org, www.unep.org/climatechange/pledgepipeline, and our twitter feed @ClimateCollege
- Cat5A1\_CO2 Def: UNFCCC CRF + Nat. Comms.
- Cat5A2\_CO2 Def: UNFCCC CRF + Nat. Comms.
- Cat5LtoNonFL\_CO2 Def: UNFCCC CRF + Nat. Comms.
- Cat5GMCMWWM\_C Def: UNFCCC CRF
- Cat5A1ForestFires Def: UNFCCC Cat5 + EDGAR(IPCC Database)
- Cat5A1HWP\_CO2 Def: UNFCCC CRF + Nat. Comms.
- Cat5bisA\_CO2 Def: UNFCCC CRF + NATCOMM.
- Cat5bisB\_CO2 Def: UNFCCC CRF + NATCOMM.
- Cat5bisC\_CO2 Def: UNFCCC CRF + NATCOMM.
- Cat5bisD\_CO2 Def: UNFCCC CRF + NATCOMM.
- Cat5bisE\_CO2 Def: UNFCCC CRF + NATCOMM.
- PRO\_WM\_Cat5\_G Def: UNFCCC Annex I Reports
- Metric GWP AR4
- climatecollege.unimelb.edu.au
- AUSTRALIAN-GERMAN CLIMATE & ENERGY COLLEGE

Various 'fair' contributions for a global 'least-cost' 2°C path (total incl. LULUCF):

	2025 rel. 2010:	2030 rel. 2010:
LEADER	#N/A	LEADER
CDC	#N/A	CDC
ECPC50	#N/A	ECPC50
ECPC90	#N/A	ECPC90
GDR	#N/A	GDR
INDC HIGH	6%	INDC HIGH
INDC LOW	14%	INDC LOW

More info on www.mitigation-contributions.org

	"Fair" contributions for a global 'least-cost' 2°C track:
LEADER	LEADER
CDC	Common-but-diff. per-cap. convergence
ECPC50	Eq. cum. Per-capita since 1950
ECPC90	Eq. cum. Per-capita since 1990
GDR	Greenhouse Development Rights
#N/A	No available data