

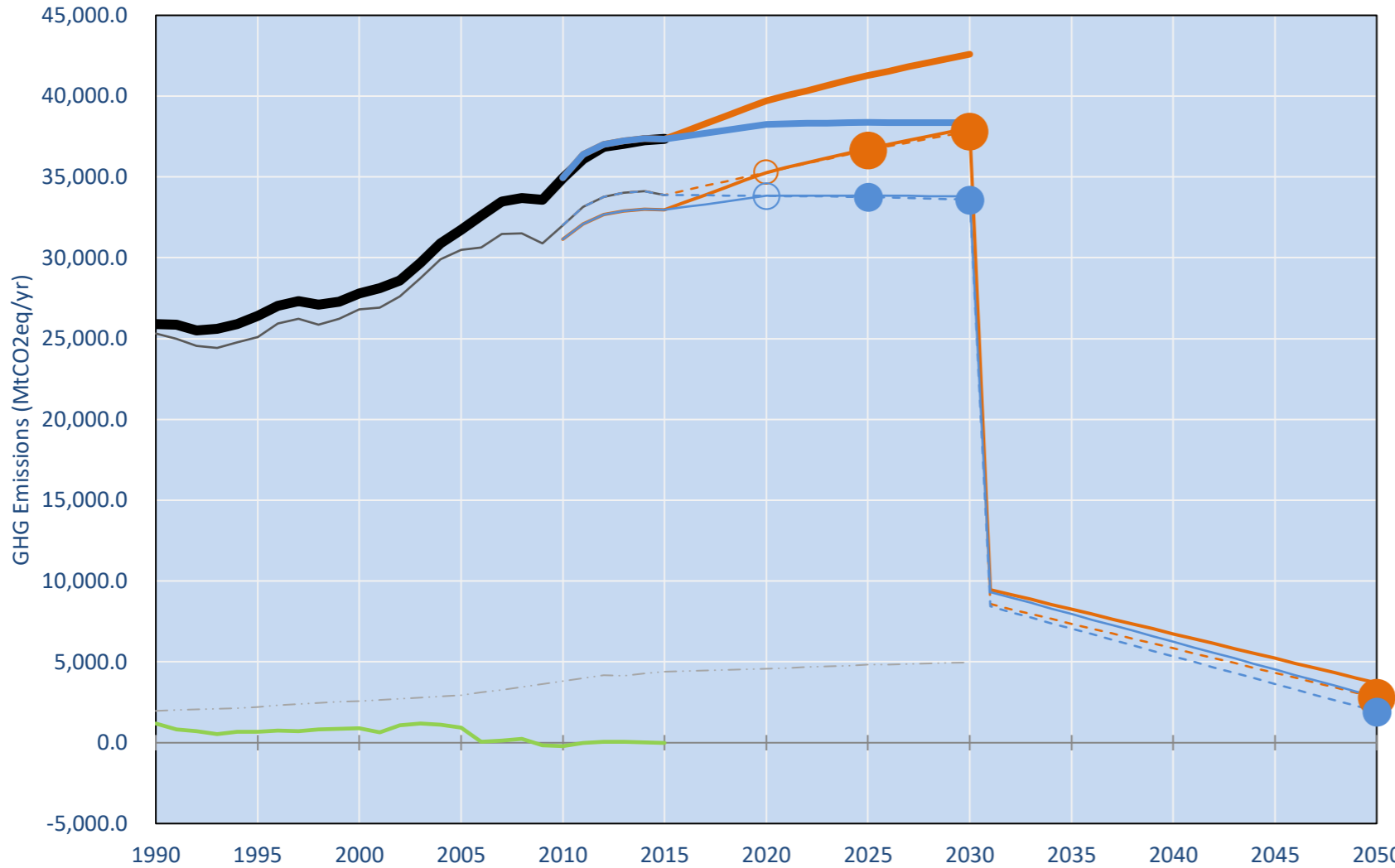
G20

Per-Capita Emissions in 2030 rel. 2015 (excl. LULUCF): **-0%**

	2015	2025	2030
Share of World Emissions excl. LULUCF (Rank):	77.6%	74.5%	73.2%
Per-Capita Emissions (tCO <sub>2</sub> eq/cap)	8t	8t	7.9t

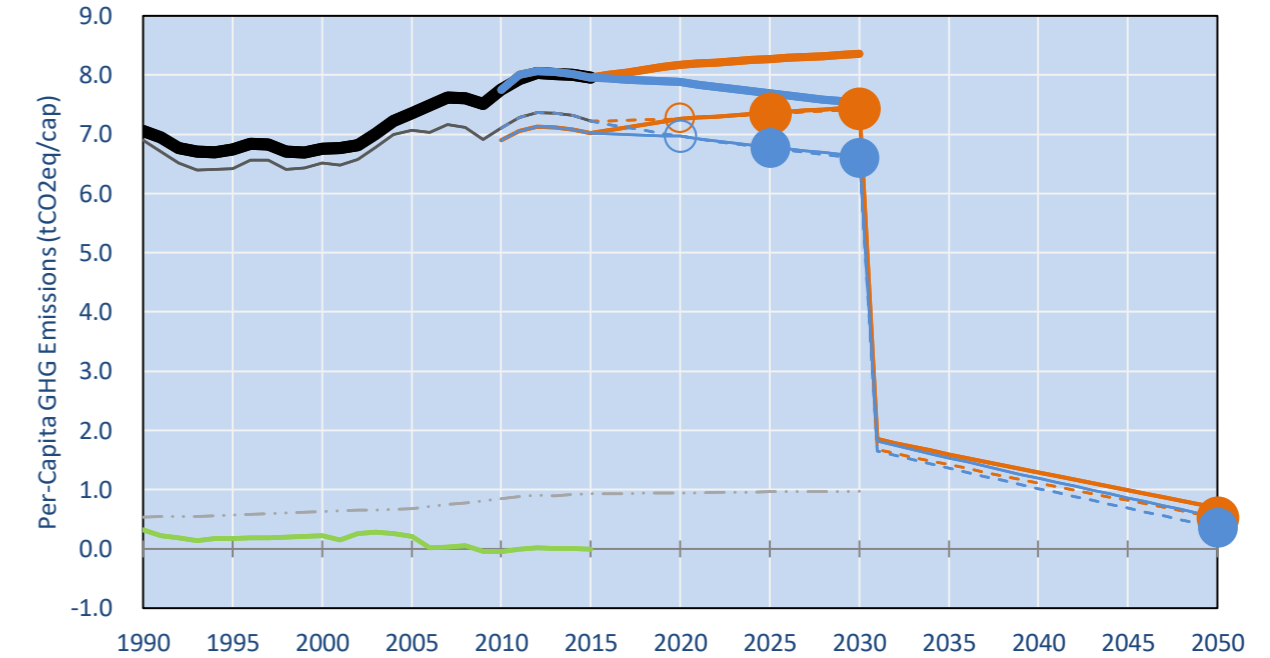
INDC Submitted: 16/02/6744

GHG Emissions

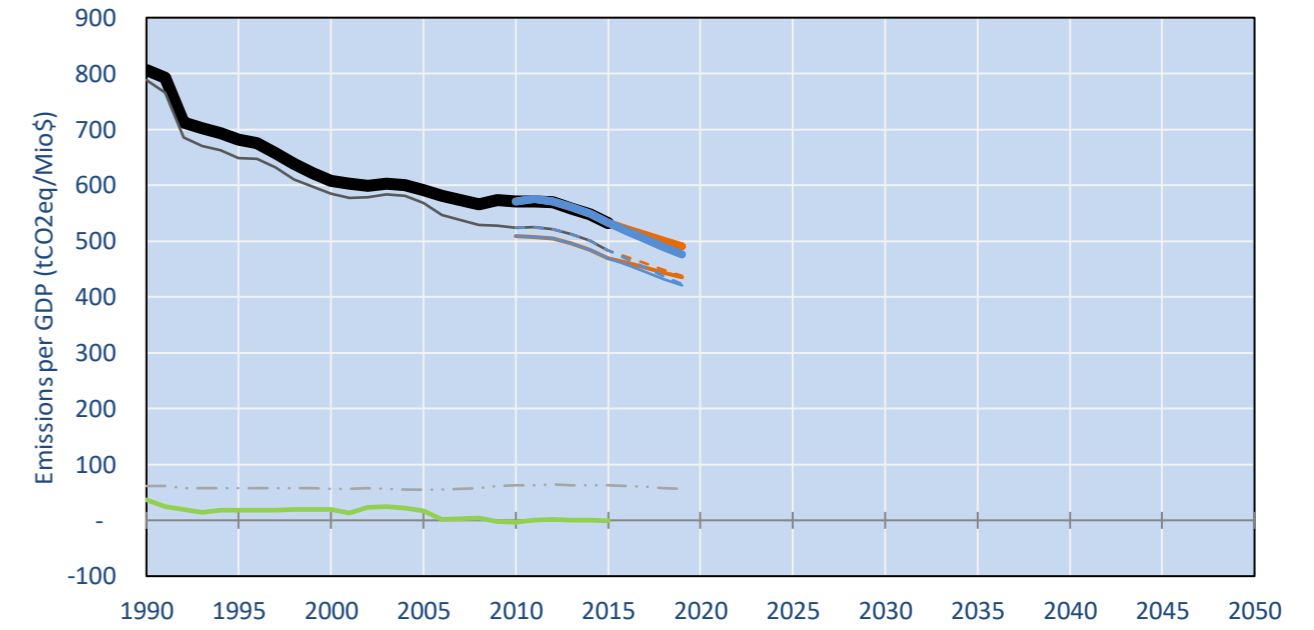


- Reference Total GHG excl. LULUCF
- Historical Covered Emissions, incl. LULUCF, if covered.
- LOW INDC Covered Emissions, incl. LULUCF if covered
- LOW INDC Covered + Non-Covered Emissions, excl. LULUCF
- HIGH INDC Covered Emissions, incl. LULUCF
- HIGH INDC Covered + Non-Covered Emissions, excl. LULUCF
- HIGH Cancun Pledges
- Reference LULUCF Emissions
- LOW INDC Levels
- LOW INDC Covered Emissions, excl. LULUCF
- HIGH INDC Levels
- HIGH INDC Covered Emissions, excl. LULUCF
- LOW Cancun Pledges
- Not-covered GHG excl. LULUCF (Region Projection)

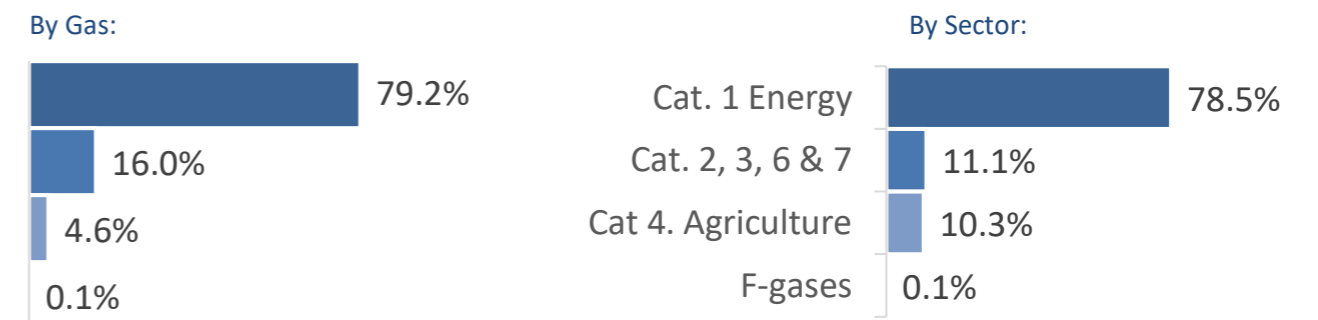
Per-Capita Emissions



GHG Emissions per GDP



2015 Total GHG Emissions excl. LULUCF



GHG Emissions

	1990	2000	2005	2010	2015	2020		2025		2030	
						low	high	low	high	low	high
(MtCO <sub>2</sub> eq/yr in GWP AR5)											
Assumed LULUCF Accounting Credits (-)/Debits (+)						- 430	- 458	- 632	- 621	- 621	- 621
NDC/INDC covered LULUCF Emissions	1,393	1,592	1,708	885	927	1	1	95	95	192	192
NDC/INDC covered Emissions excl. LULUCF	23,929	25,224	28,785	31,148	32,970	33,830	36,760	33,860	38,029	38,800	33,800
Total GHG excl. LULUCF	25,897	27,809	31,720	34,953	37,357	39,713	38,263	41,280	38,380	42,594	38,365
Total GHG incl. LULUCF	27,078	28,710	32,653	34,744	37,326	38,181	36,731	39,684	36,783	40,924	36,695

Relative GHG Emissions

	1990	2000	2005	2010	2015	2020		2025		2030	
						low	high	low	high	low	high
Total excl. LULUCF											
Relative 1990	100%	107%	122%	135%	144%	153%	148%	159%	148%	164%	148%
Relative 2000	93%	100%	114%	126%	134%	143%	138%	148%	138%	153%	138%
Relative 2005	82%	88%	100%	110%	118%	125%	121%	130%	121%	134%	121%
Relative 2010	74%	80%	91%	100%	107%	114%	109%	118%	110%	122%	110%
Relative 2015	69%	74%	85%	94%	100%	106%	102%	111%	103%	114%	103%

Per-Capita Emissions

	1990	2000	2005	2010	2015	2020		2025		2030	
						low	high	low	high	low	high
Total excl. LULUCF											
Population (Mio)	3,669	4,117	4,315	4,511	4,694	4,856	4,856	4,989	4,989	5,096	5,096
Per-Capita Emissions (tCO <sub>2</sub> eq/cap)	7.1	6.8	7.4	7.7	8.0	8.2	7.9	8.3	7.7	8.4	7.5
Relative 1990	100%	96%	104%	110%	113%	116%	112%	117%	109%	118%	107%
Relative 2000	104%	100%	109%	115%	118%	121%	117%	122%	114%	124%	111%
Relative 2005	96%	92%	100%	105%	108%	111%	107%	113%	105%	114%	102%
Relative 2010	91%	87%	95%	100%	103%	106%	102%	107%	99%	108%	97%
Relative 2015	89%	85%	92%	97%	100%	103%	99%	104%	97%	105%	95%

Data Sources:

- Cat1\_CO2 Def: PRIMAPHIST17
- Cat2367\_CO2 Def: PRIMAPHIST17
- Cat4\_CO2 Def: PRIMAPHIST17
- Cat5\_CO2 Def: PRIMAPHIST17
- Cat1\_CH4 Def: PRIMAPHIST17
- Cat2367\_CH4 Def: PRIMAPHIST17
- Cat4\_CH4 Def: PRIMAPHIST17
- Cat5\_CH4 Def: PRIMAPHIST17
- Cat1\_N2O Def: PRIMAPHIST17
- Cat2367\_N2O Def: PRIMAPHIST17
- Cat4\_N2O Def: PRIMAPHIST17
- Cat5\_N2O Def: PRIMAPHIST17
- Cat0\_HFCs Def: PRIMAPHIST17
- Cat0\_PFCs Def: PRIMAPHIST17
- Cat0\_SF6 Def: PRIMAPHIST17
- Population Def: UN 2015 Population Projections MEDIUM
- GDP Def: IMF WEO 2015, PPP adjusted GDP, constant 2009 prices...
- IPCC WG3 Scenario IMAGE | AMPERE2-550-FullTech-HST
- PRIMAPHIST16 description: www.pik-potsdam.de/primap-live/primap-hist/
- Gratefully acknowledged in particular: PRIMAP, CAIT, CDIAC, EDGAR, IPCC, IEA, UNEP GAP Team, AMPERE Team and comments on earlier versions, in particular by Giacomo Grassi. Errors and misjudgements are our own. Malte Meinshausen & Ryan Alexander; The "Fiji COP23" Edition was enabled through support via the BMUB project UM14 41 4060
- This Factsheet is available at www.climatecollege.unimelb.edu.au/indc-factsheets. Check out as well: www.climateactiontracker.org, www.mitigation-contributions.org, cait.wri.org, infographics.pbl.nl/indc, live.primap.org, www.unep.org/climatechange/pledgepipeline, and our twitter feed @ClimateCollege
- Cat5A1\_CO2 Def: UNFCCC CRF + Nat. Comms.
- Cat5A2\_CO2 Def: UNFCCC CRF + Nat. Comms.
- Cat5LtoNonFL\_CO2 Def: UNFCCC CRF + Nat. Comms.
- Cat5GMCMWMM\_C Def: UNFCCC CRF
- Cat5A1ForestFires Def: UNFCCC Cat5 + EDGAR(IPCC Database)
- Cat5A1HWP\_CO2 Def: UNFCCC CRF + Nat. Comms.
- Cat5bisA\_CO2 Def: UNFCCC CRF + NATCOMM.
- Cat5bisB\_CO2 Def: UNFCCC CRF + NATCOMM.
- Cat5bisC\_CO2 Def: UNFCCC CRF + NATCOMM.
- Cat5bisD\_CO2 Def: UNFCCC CRF + NATCOMM.
- Cat5bisE\_CO2 Def: UNFCCC CRF + NATCOMM.
- PRO\_WM\_Cat5\_G Def: UNFCCC Annex I Reports
- Metric GWP AR5
- climatecollege.unimelb.edu.au
- AUSTRALIAN-GERMAN CLIMATE & ENERGY COLLEGE

Various 'fair' contributions for a global 'least-cost' 2°C path (total incl. LULUCF):

	2025 rel. 2010:	2030 rel. 2010:
LEADER	#N/A	LEADER
CDC	#N/A	CDC
ECPC50	#N/A	ECPC50
ECPC90	#N/A	ECPC90
GDR	#N/A	GDR
INDC HIGH	6%	INDC HIGH
INDC LOW	14%	INDC LOW

More info on www.mitigation-contributions.org

- "Fair" contributions for a global 'least-cost' 2°C track:
- LEADER Leader
- CDC Common-but-diff. per-cap. convergence
- ECPC50 Eq. cum. Per-capita since 1950
- ECPC90 Eq. cum. Per-capita since 1990
- GDR Greenhouse Development Rights
- #N/A No available data