



Grenada

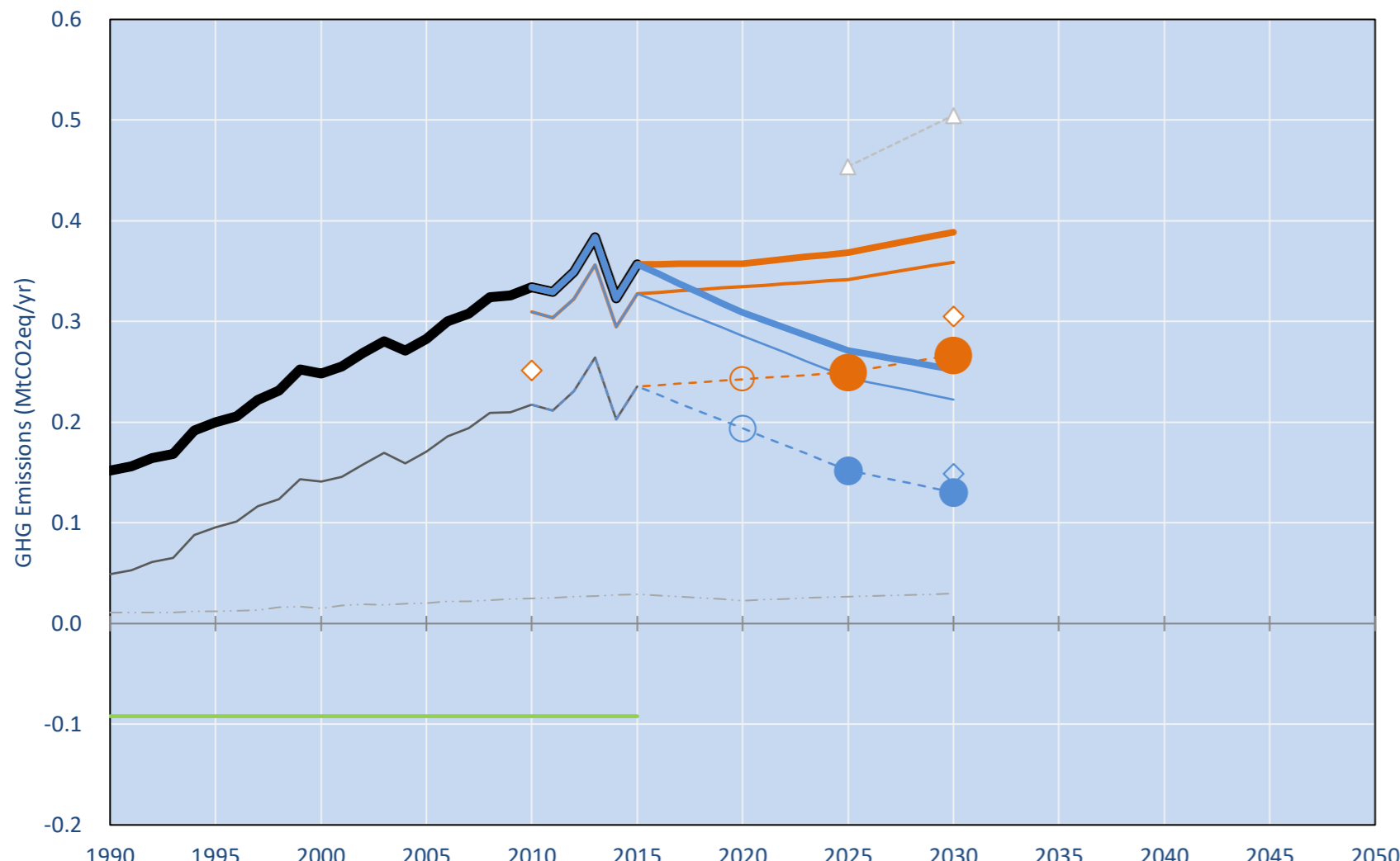
Per-Capita Emissions in 2030 rel. 2015 (excl. LULUCF): **-14%**

NDC 2025	NDC 2030	2015 World Rank	2025 World Rank	2030 World Rank
0% rel. BAU of 0.2 Mt	0% rel. BAU of 0.3 Mt	0.0% #182	0.0% #184	0.0% #184
-30% rel.2010	-40% rel.2010	Per-Capita Emissions (tCO2eq/cap): 3.3t #115	2.9t #131	2.9t #130

NDC: Grenada commits to reducing its GHG emissions by 30% from 2010 levels by 2025, with an indicative reduction of 40% from 2010 levels by 2030. (GWP AR4)

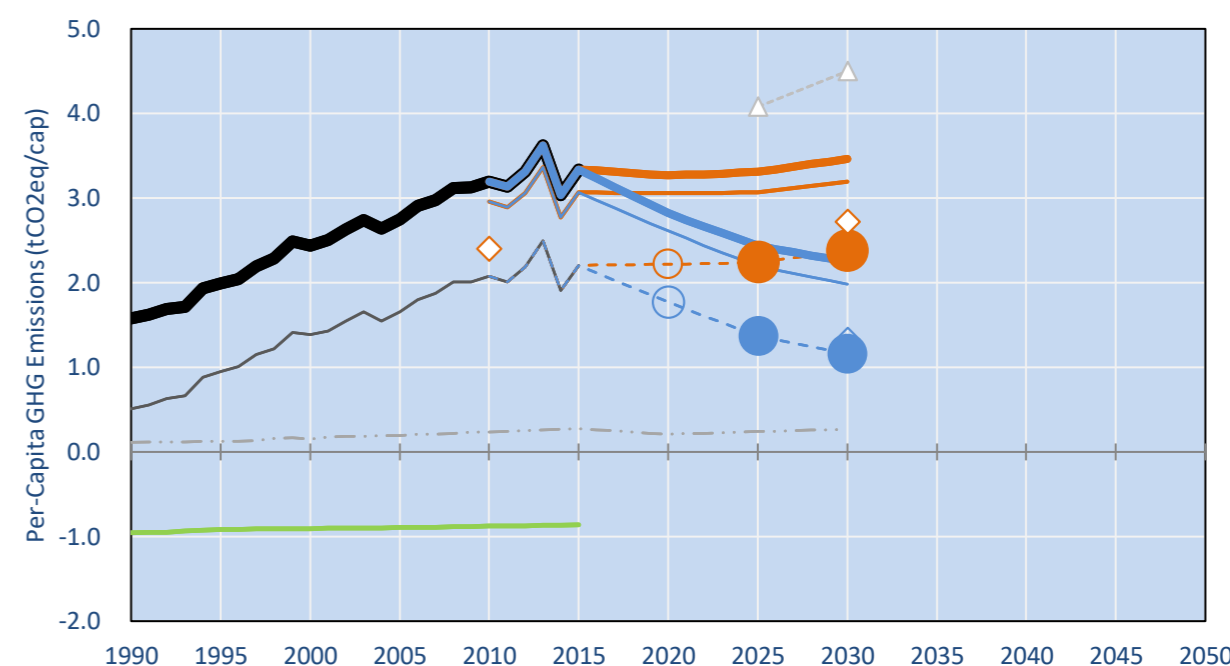
INDC Submitted: 21/09/2015

GHG Emissions

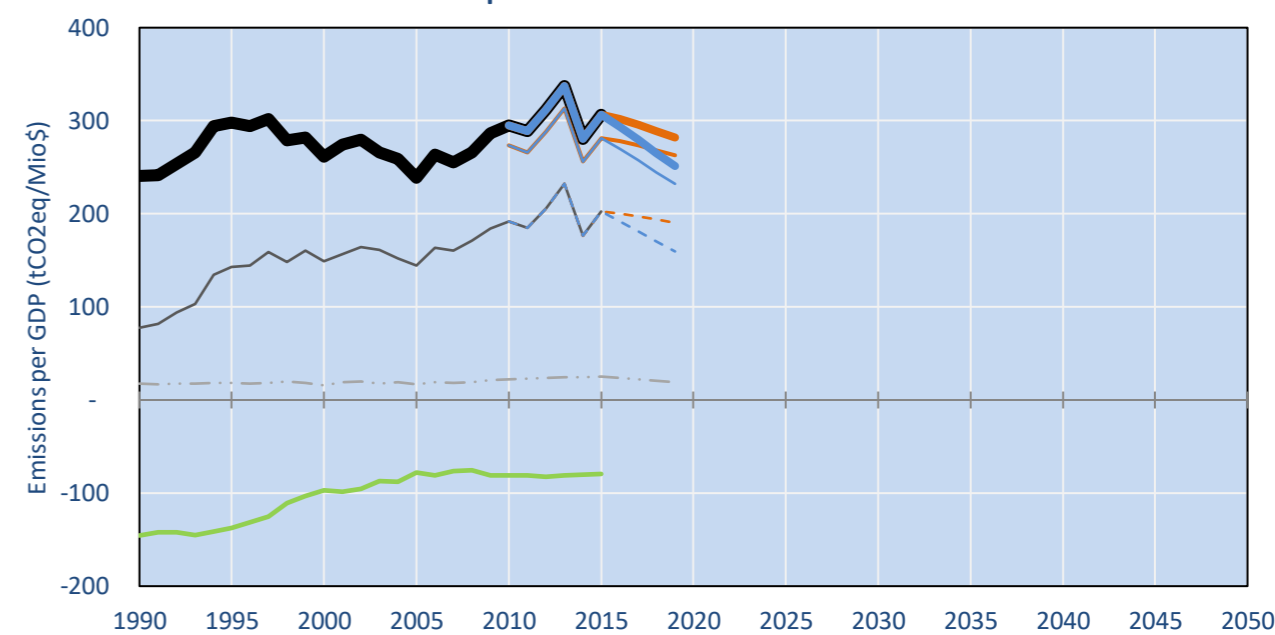


- Reference Total GHG excl. LULUCF
- Historical Covered Emissions, incl. LULUCF, if covered.
- LOW INDC Covered Emissions, incl. LULUCF if covered
- LOW INDC Covered + Non-Covered Emissions, excl. LULUCF
- HIGH INDC Covered Emissions, incl. LULUCF
- HIGH INDC Covered + Non-Covered Emissions, excl. LULUCF
- HIGH Cancun Pledges
- Reference LULUCF Emissions
- LOW INDC Levels
- LOW INDC Covered Emissions, excl. LULUCF
- HIGH INDC Levels
- HIGH INDC Covered Emissions, excl. LULUCF
- LOW Cancun Pledges
- Grenada INDC BAU
- Regional/Gas-specific BAU
- Not-covered GHG excl. LULUCF (Region Projection)

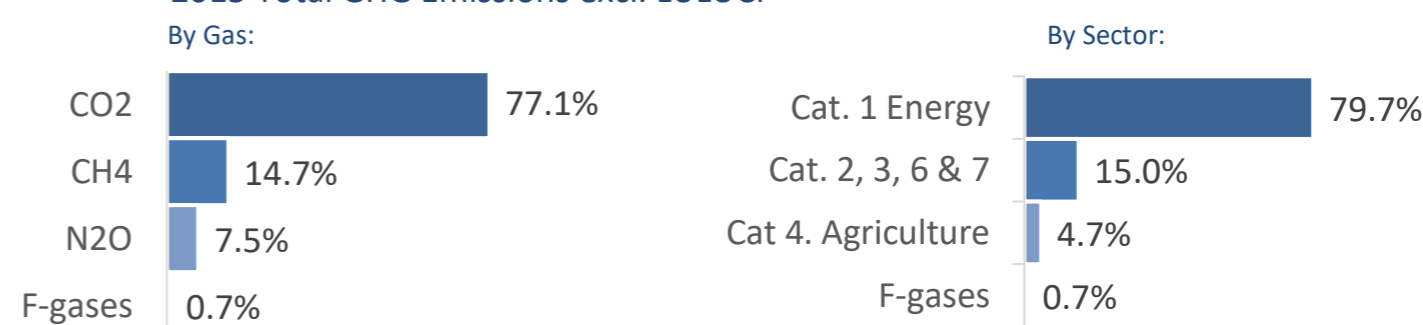
Per-Capita Emissions



GHG Emissions per GDP



2015 Total GHG Emissions excl. LULUCF



GHG Emissions

	1990	2000	2005	2010	2015	2020		2025		2030	
						low	high	low	high	low	high
Assumed LULUCF Accounting Credits (-)/Debits (+)	0	0	0	0	0	0	0	0	0	0	0
NDC covered LULUCF Emissions	0	0	0	0	0	0	0	0	0	0	0
NDC covered Emissions excl. LULUCF	0	0	0	0	0	0	0	0	0	0	0
Total GHG excl. LULUCF	0	0	0	0	0	0	0	0	0	0	0
Total GHG incl. LULUCF	0	0	0	0	0	0	0	0	0	0	0

Relative GHG Emissions

	1990	2000	2005	2010	2015	2020		2025		2030	
						low	high	low	high	low	high
Total excl. LULUCF											
Relative 1990	100%	163%	186%	220%	235%	235%	203%	243%	178%	256%	166%
Relative 2000	61%	100%	114%	135%	144%	144%	124%	149%	109%	157%	102%
Relative 2005	54%	88%	100%	118%	126%	126%	109%	130%	96%	137%	89%
Relative 2010	45%	74%	85%	100%	107%	107%	92%	110%	81%	116%	75%
Relative 2015	43%	70%	79%	94%	100%	100%	87%	103%	76%	109%	71%

Per-Capita Emissions

	1990	2000	2005	2010	2015	2020		2025		2030	
						low	high	low	high	low	high
Total excl. LULUCF											
Population (Mio)	0	0	0	0	0	0	0	0	0	0	0
Per-Capita Emissions (tCO2eq/cap)	1.6	2.4	2.7	3.2	3.3	3.3	2.8	3.3	2.4	3.5	2.2
Relative 1990	100%	155%	174%	202%	212%	207%	179%	210%	154%	219%	142%
Relative 2000	65%	100%	113%	131%	137%	134%	116%	136%	100%	142%	92%
Relative 2005	57%	89%	100%	116%	122%	119%	103%	120%	89%	126%	82%
Relative 2010	49%	76%	86%	100%	105%	102%	88%	104%	76%	108%	70%
Relative 2015	47%	73%	82%	96%	100%	98%	85%	99%	73%	104%	67%

Data Sources:

Cat1_CO2 PRIMAPHIST17
 Cat2367_CO2 PRIMAPHIST17
 Cat4_CO2 PRIMAPHIST17
 Cat5_CO2 PRIMAPHIST17
 Cat1_CH4 PRIMAPHIST17
 Cat2367_CH4 PRIMAPHIST17
 Cat4_CH4 PRIMAPHIST17
 Cat5_CH4 PRIMAPHIST17
 Cat1_N2O PRIMAPHIST17
 Cat2367_N2O PRIMAPHIST17
 Cat4_N2O PRIMAPHIST17
 Cat5_N2O PRIMAPHIST17
 Cat0_HFCs PRIMAPHIST17
 Cat0_PFCs PRIMAPHIST17
 Cat0_SF6 PRIMAPHIST17
 Population UN 2015 Population Projections MEDIUM
 GDP IMF WEO 2015, PPP adjusted GDP, constant 2009 prices...
 PRIMAPHIST16 description: www.pik-potsdam.de/primap-live/primap-hist/
 Gratefully acknowledged in particular: PRIMAP, CAIT, CDIAC, EDGAR, IPCC, IEA, UNEP Gap Team, AMPERE Team and comments on earlier versions, in particular by Giacomo Grassi. Errors and misjudgements are our own. Malte Meinshausen & Ryan Alexander; The "Fiji COP23" Edition was enabled through support via the BMUB project UM14 41 4060
 This Factsheet is available at www.climatecollege.unimelb.edu.au/indc-factsheets. Check out as well: www.climateactiontracker.org, www.mitigation-contributions.org, cait.wri.org, infographics.pbl.nl/indc, live.primap.org, www.unep.org/climatechange/pledgepipeline, and our twitter feed @ClimateCollege
 cat5A1_CO2 UNFCCC CRF + Nat. Comms.
 cat5A2_CO2 UNFCCC CRF + Nat. Comms.
 Cat5LtoNonFL_CO UNFCCC CRF + Nat. Comms.
 Cat5GCMCMWM_C UNFCCC CRF
 Cat5A1ForestFires UNFCCC Cat5 + EDGAR(IPCC Database)
 Cat5A1HWP_CO2 UNFCCC CRF + Nat. Comms.
 Cat5bisA_CO2 UNFCCC CRF + NATCOMM.
 Cat5bisB_CO2 UNFCCC CRF + NATCOMM.
 Cat5bisC_CO2 UNFCCC CRF + NATCOMM.
 Cat5bisD_CO2 UNFCCC CRF + NATCOMM.
 Cat5bisE_CO2 UNFCCC CRF + NATCOMM.
 PRO_WM_Cat5_G UNFCCC Annex I Reports
 Metric GWP AR5
 climatecollege.unimelb.edu.au
 AUSTRALIAN-GERMAN CLIMATE & ENERGY COLLEGE

Meinshausen, Alexander et al., www.climatecollege.unimelb.edu.au/indc-factsheets, The University of Melbourne



Various 'fair' contributions for a global 'least-cost' 2°C path (total incl. LULUCF):

	2025 rel. 2010:	2030 rel. 2010:		2025 rel. 2010:	2030 rel. 2010:
LEADER	#N/A	LEADER	#N/A	#N/A	#N/A
CDC	#N/A	CDC	#N/A	#N/A	#N/A
ECPC50	#N/A	ECPC50	#N/A	#N/A	#N/A
ECPC90	#N/A	ECPC90	#N/A	#N/A	#N/A
GDR	#N/A	GDR	#N/A	#N/A	#N/A
INDC HIGH	-26%	INDC HIGH	-34%	-34%	-34%
INDC LOW	14%	INDC LOW	22%	22%	22%

More info on www.mitigation-contributions.org

"Fair" contributions for a global 'least-cost' 2°C track:

- LEADER Leader
- CDC Common-but-diff. per-cap. convergence
- ECPC50 Eq. cum. Per-capita since 1950
- ECPC90 Eq. cum. Per-capita since 1990
- GDR Greenhouse Development Rights
- #N/A No available data