

Haiti

Per-Capita Emissions in 2030 rel. 2015 (excl. LULUCF): **+47%**

NDC 2025

NDC 2030

2015 World Rank

2025 World Rank

2030 World Rank

Share of World Emissions excl. LULUCF (Rank):

0.0% #143

0.0% #138

0.0% #134

Per-Capita Emissions (tCO2eq/cap)

0.9t #190

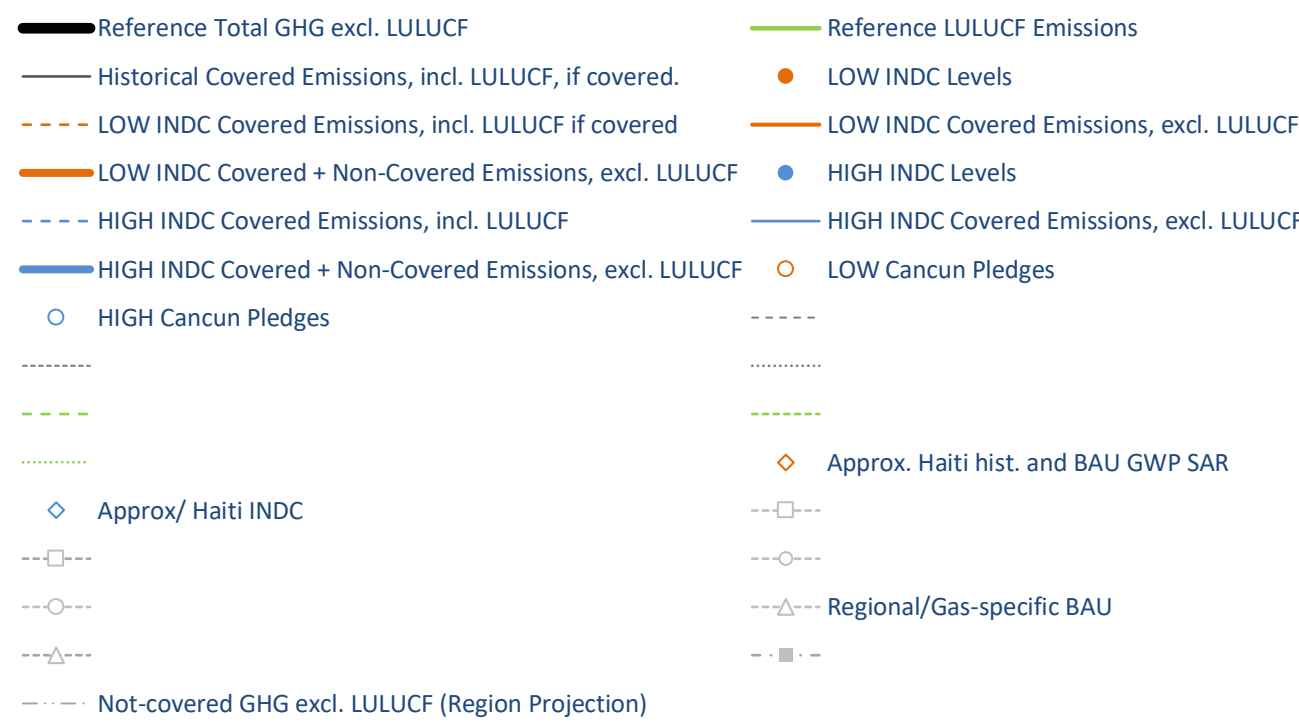
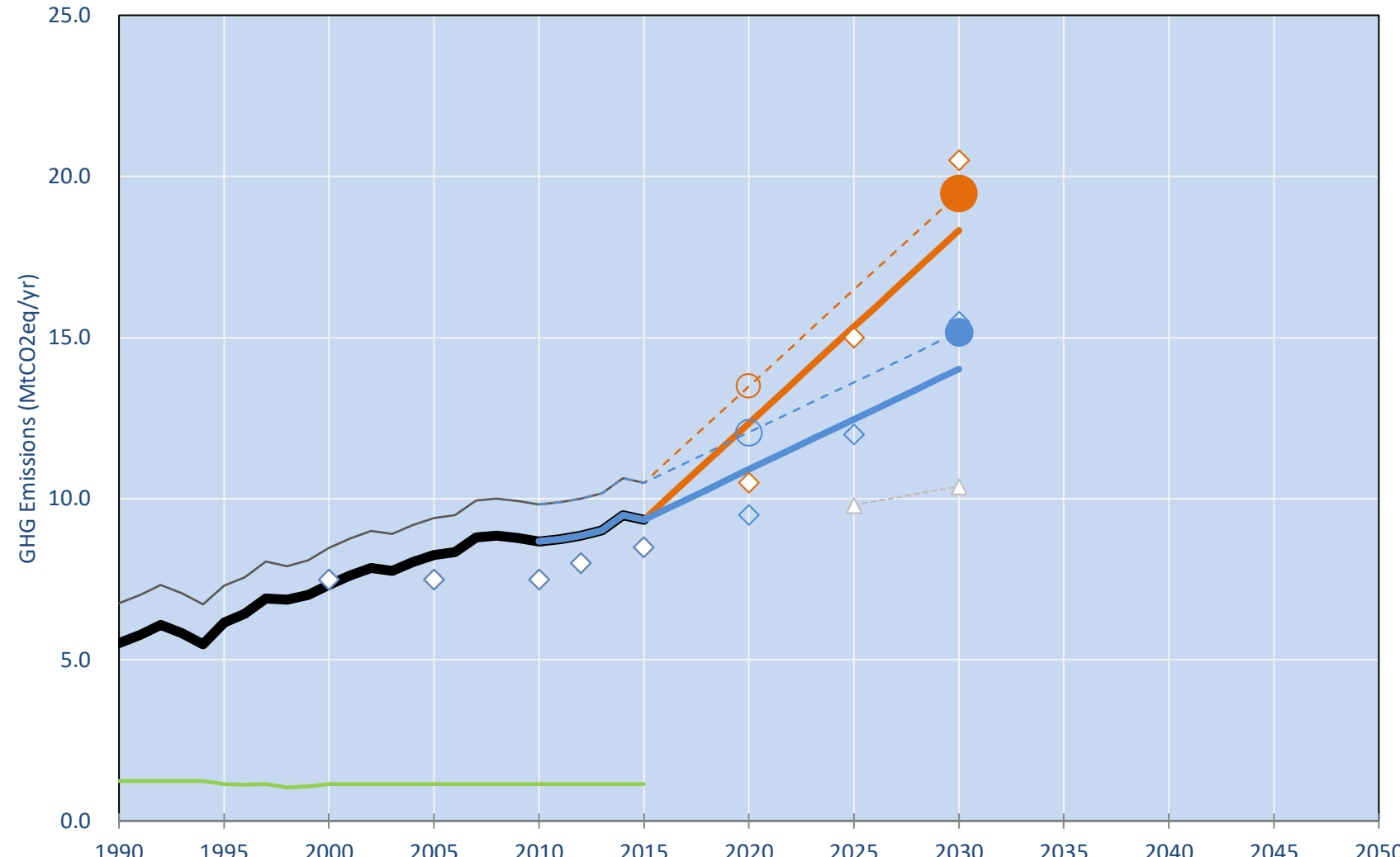
1.2t #179

1.3t #173

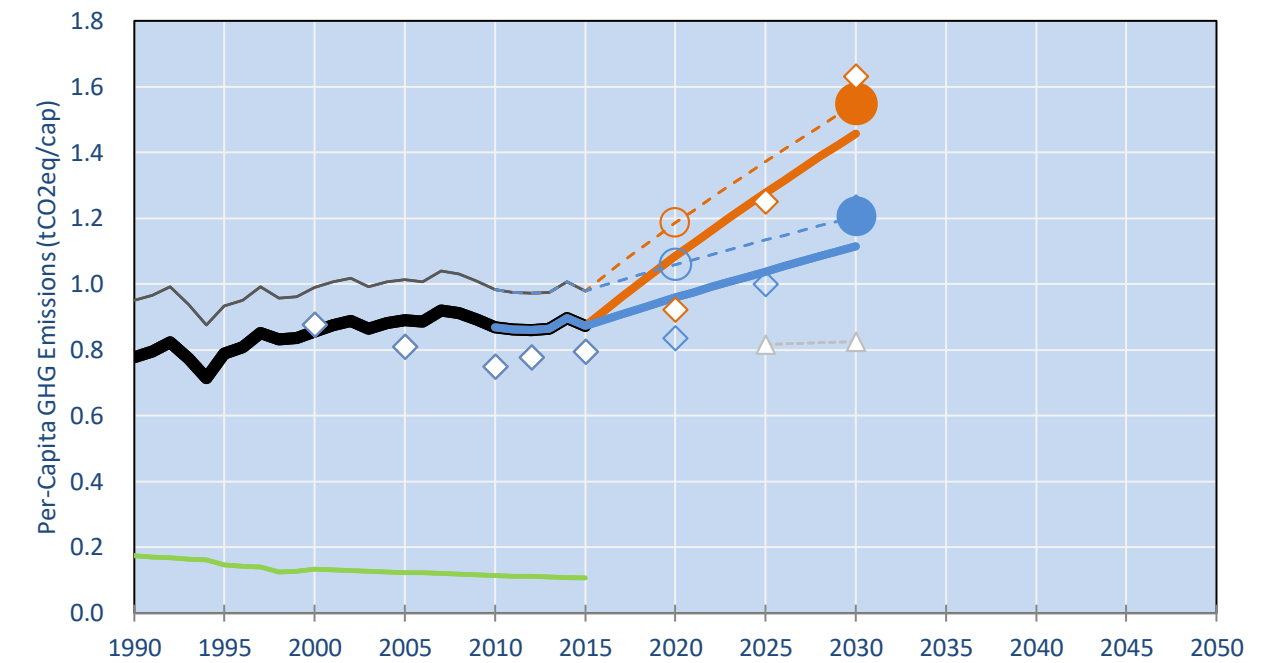
NDC: Reduction of 5% GHG emissions compared to 2010 levels Conditional target: 26% GHG emission reduction pending on international support. (GWP SAR)

INDC Submitted: 30/09/2015

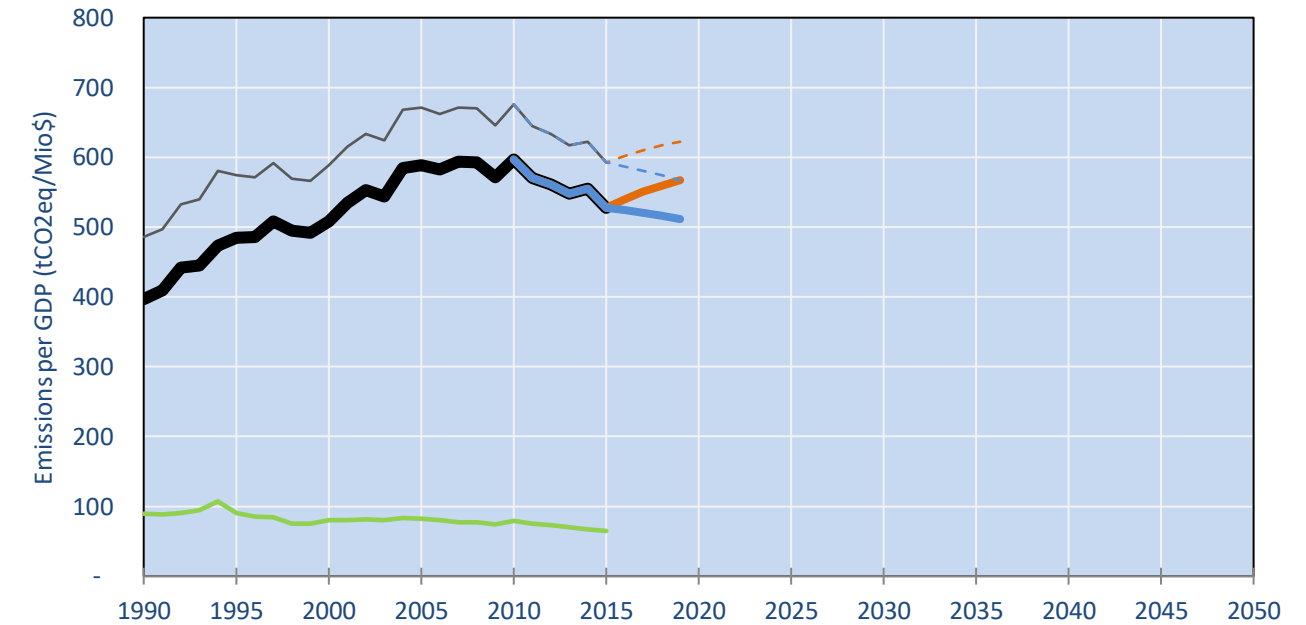
GHG Emissions



Per-Capita Emissions

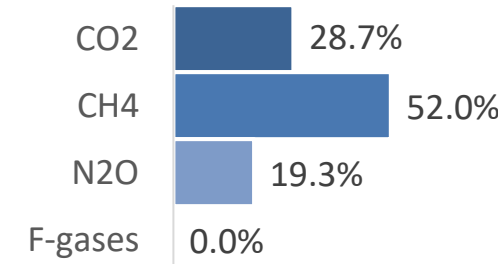


GHG Emissions per GDP

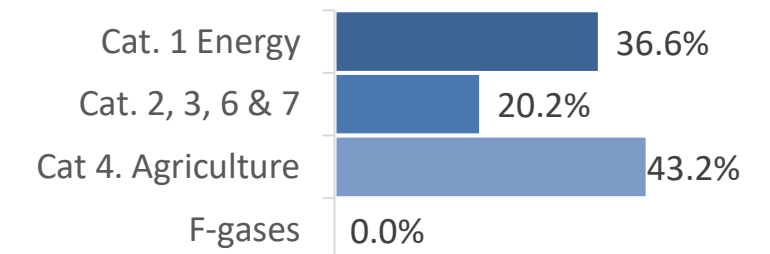


2015 Total GHG Emissions excl. LULUCF

By Gas:



By Sector:



GHG Emissions

| | 1990 | 2000 | 2005 | 2010 | 2015 | 2020 | | 2025 | | 2030 | |
|--|------|------|------|------|------|------|------|------|------|------|------|
| (MtCO2eq/yr in GWP SAR) | | | | | | low | high | low | high | low | high |
| Assumed LULUCF Accounting Credits (-)/Debits (+) | | | | | | | | | | | |
| NDC covered LULUCF Emissions | 1 | 1 | 1 | 1 | 1 | 1 | 1 | 1 | 1 | 1 | 1 |
| NDC covered Emissions excl. LULUCF | 6 | 7 | 8 | 9 | 9 | 12 | 11 | 15 | 12 | 18 | 14 |
| Total GHG excl. LULUCF | 6 | 7 | 8 | 9 | 9 | 12 | 11 | 15 | 12 | 18 | 14 |
| Total GHG incl. LULUCF | 7 | 8 | 9 | 10 | 10 | 13 | 12 | 16 | 14 | 19 | 15 |

Relative GHG Emissions

| | 1990 | 2000 | 2005 | 2010 | 2015 | 2020 | | 2025 | | 2030 | |
|--------------------|------|------|------|------|------|------|------|------|------|------|------|
| Total excl. LULUCF | | | | | | low | high | low | high | low | high |
| Relative 1990 | 100% | 133% | 150% | 157% | 169% | 224% | 198% | 278% | 226% | 332% | 254% |
| Relative 2000 | 75% | 100% | 113% | 119% | 128% | 169% | 149% | 209% | 170% | 250% | 192% |
| Relative 2005 | 67% | 89% | 100% | 105% | 113% | 150% | 132% | 186% | 151% | 222% | 170% |
| Relative 2010 | 64% | 84% | 95% | 100% | 108% | 142% | 126% | 177% | 144% | 211% | 162% |
| Relative 2015 | 59% | 78% | 88% | 93% | 100% | 132% | 117% | 164% | 133% | 196% | 150% |

Per-Capita Emissions

| | 1990 | 2000 | 2005 | 2010 | 2015 | 2020 | | 2025 | | 2030 | |
|-----------------------------------|------|------|------|------|------|------|------|------|------|------|------|
| Total excl. LULUCF | | | | | | low | high | low | high | low | high |
| Population (Mio) | 7 | 9 | 9 | 10 | 11 | 11 | 11 | 12 | 12 | 13 | 13 |
| Per-Capita Emissions (tCO2eq/cap) | 0.8 | 0.9 | 0.9 | 0.9 | 0.9 | 1.1 | 1.0 | 1.3 | 1.0 | 1.5 | 1.1 |
| Relative 1990 | 100% | 110% | 115% | 112% | 112% | 140% | 123% | 164% | 134% | 187% | 143% |
| Relative 2000 | 91% | 100% | 104% | 101% | 102% | 127% | 112% | 149% | 121% | 170% | 130% |
| Relative 2005 | 87% | 96% | 100% | 97% | 98% | 122% | 108% | 143% | 117% | 164% | 125% |
| Relative 2010 | 90% | 99% | 103% | 100% | 101% | 125% | 110% | 147% | 120% | 168% | 128% |
| Relative 2015 | 89% | 98% | 102% | 99% | 100% | 124% | 110% | 146% | 119% | 167% | 128% |

Data Sources:

Cat1_CO2 PRIMAPHIST17
 Cat2367_CO2 PRIMAPHIST17
 Cat4_CO2 PRIMAPHIST17
 Cat5_CO2 PRIMAPHIST17
 Cat1_CH4 PRIMAPHIST17
 Cat2367_CH4 PRIMAPHIST17
 Cat4_CH4 PRIMAPHIST17
 Cat5_CH4 PRIMAPHIST17
 Cat1_N2O PRIMAPHIST17
 Cat2367_N2O PRIMAPHIST17
 Cat4_N2O PRIMAPHIST17
 Cat5_N2O PRIMAPHIST17
 Cat0_HFCs PRIMAPHIST17
 Cat0_PFCs PRIMAPHIST17
 Cat0_SF6 PRIMAPHIST17
 Population UN 2015 Population Projections MEDIUM
 GDP IMF WEO 2015, PPP adjusted GDP, constant 2009 prices...
 IPCC WG3 Scenario IMAGE | AMPERE2-550-FullTech-HST
 PRIMAPHIST16 description: www.pik-potsdam.de/primap-live/primap-hist/
 Gratefully acknowledged in particular: PRIMAP, CAIT, CDIAC, EDGAR, IPCC, IEA, UNEP Gap Team, AMPERE Team and comments on earlier versions, in particular by Giacomo Grassi. Errors and misjudgements are our own. Malte Meinshausen & Ryan Alexander; The "Fiji COP23" Edition was enabled through support via the BMUB project UM14 41 4060
 This Factsheet is available at www.climatecollege.unimelb.edu.au/indc-factsheets. Check out as well: www.climateactiontracker.org, www.mitigation-contributions.org, cait.wri.org, infographics.pbl.nl/indc, live.primap.org, www.unep.org/climatechange/pledgepipeline, and our twitter feed @ClimateCollege
 climatecollege.unimelb.edu.au
 AUSTRALIAN-GERMAN CLIMATE & ENERGY COLLEGE

Various 'fair' contributions for a global 'least-cost' 2°C path (total incl. LULUCF):

More info on www.mitigation-contributions.org

| | 2025 rel. 2010: | | 2030 rel. 2010: | |
|-----------|-----------------|-----------|-----------------|---|
| LEADER | #N/A | LEADER | #N/A | "Fair" contributions for a global 'least-cost' 2°C track: |
| CDC | #N/A | CDC | #N/A | LEADER Leader |
| ECPC50 | #N/A | ECPC50 | #N/A | CDC Common-but-diff. per-cap. convergence |
| ECPC90 | #N/A | ECPC90 | #N/A | ECPC50 Eq. cum. Per-capita since 1950 |
| GDR | #N/A | GDR | #N/A | ECPC90 Eq. cum. Per-capita since 1990 |
| INDC HIGH | 39% | INDC HIGH | 54% | GDR Greenhouse Development Rights |
| INDC LOW | 68% | INDC LOW | 98% | #N/A No available data |