

Jamaica

Per-Capita Emissions in 2030 rel. 2015 (excl. LULUCF): **+77%**

NDC 2025

NDC 2030

2015 World Rank

2025 World Rank

2030 World Rank

Share of World Emissions excl. LULUCF (Rank):

0.0% #148

0.0% #138

0.0% #137

Per-Capita Emissions (tCO2eq/cap)

3.1t #125

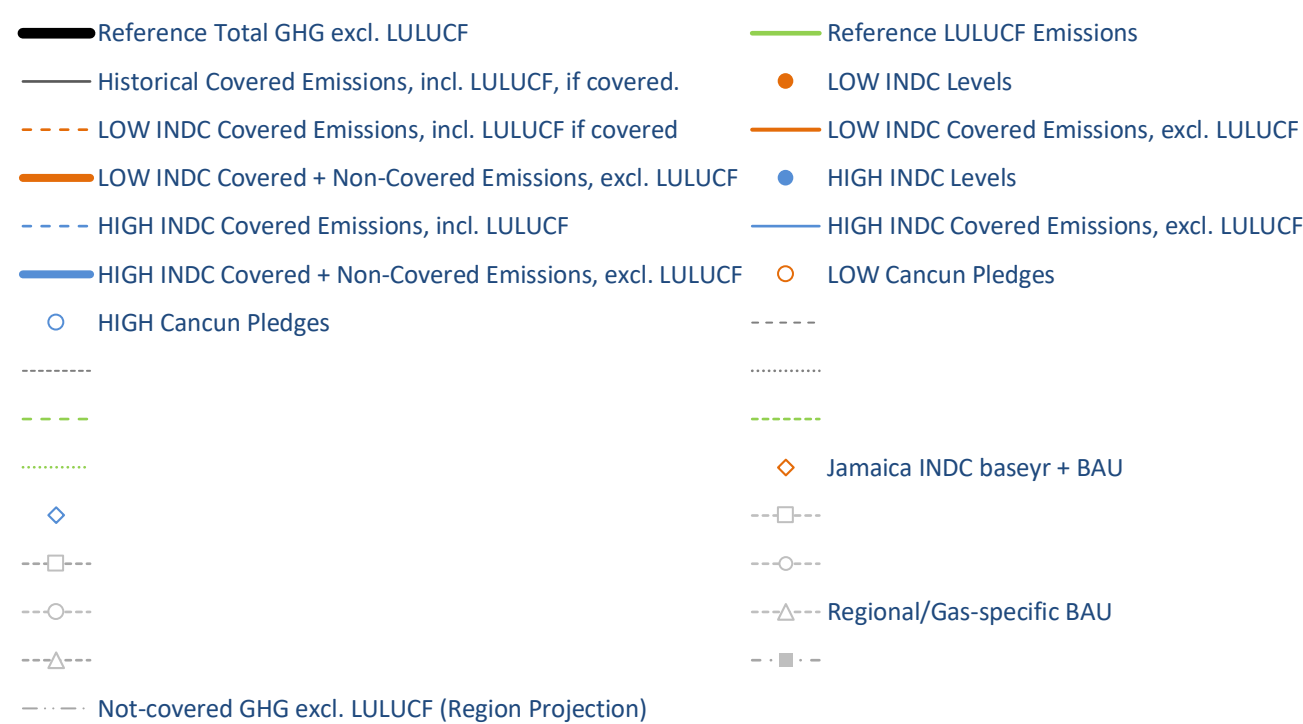
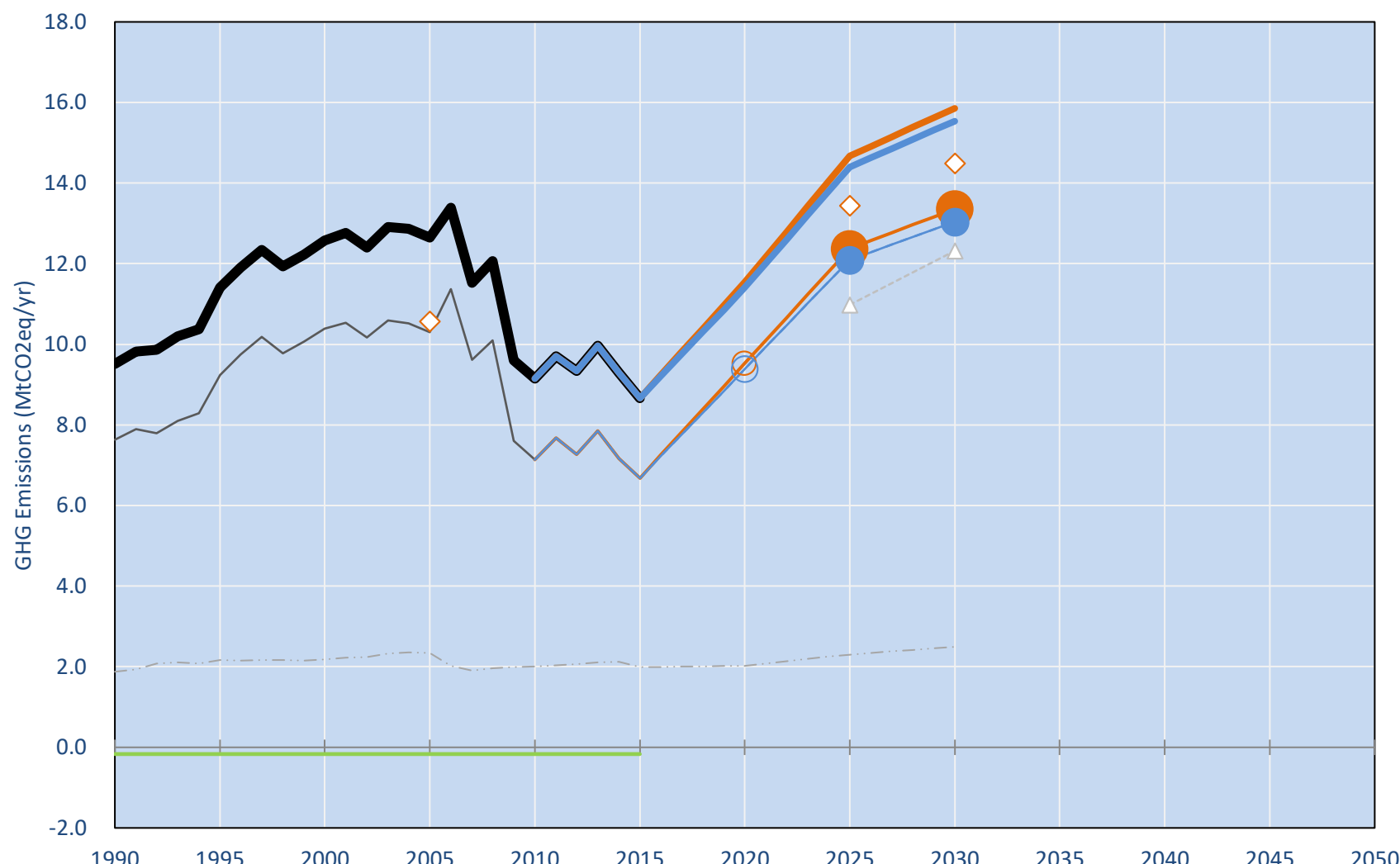
5.1t #93

5.5t #86

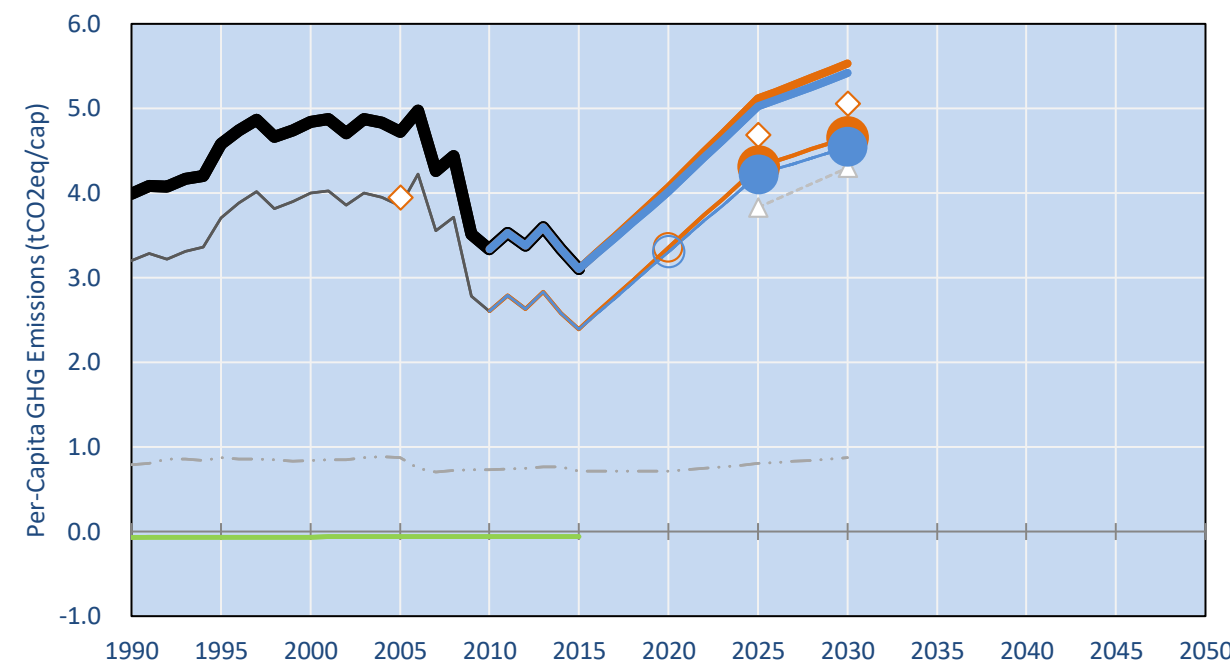
NDC: 7.8% below BAU by 2030 (unc) and 10% below BAU by 2030 (cond) with specified BAU and target levels in MtCO2eq. . ()

INDC Submitted: 27/11/2015

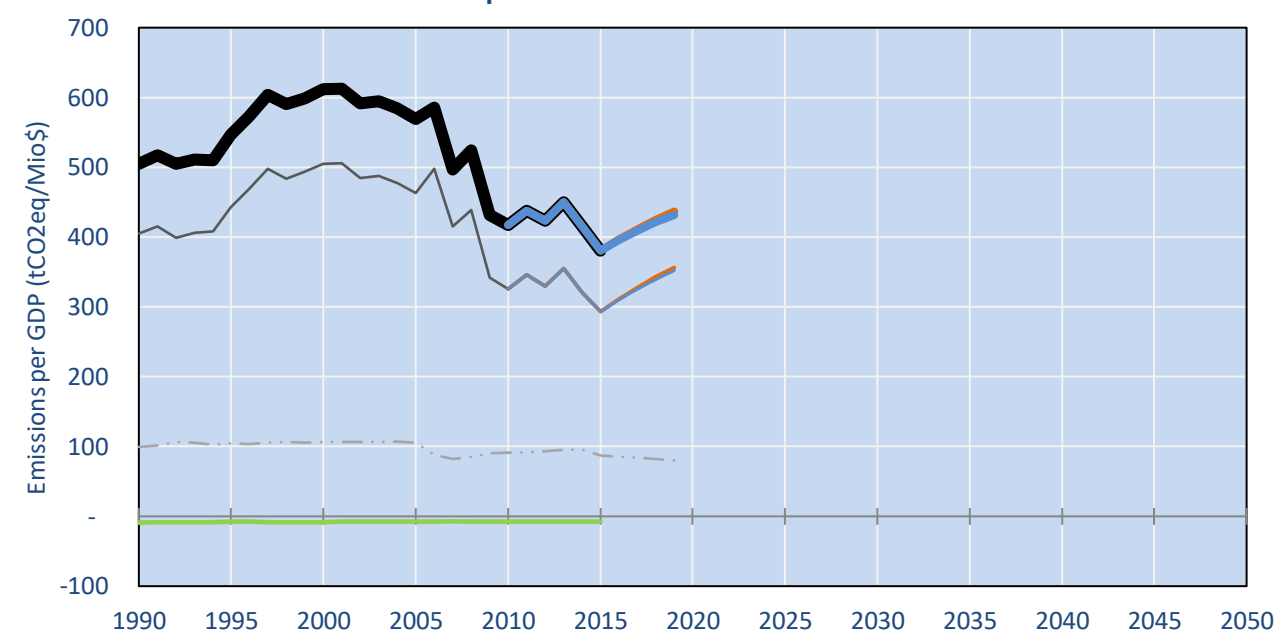
GHG Emissions



Per-Capita Emissions

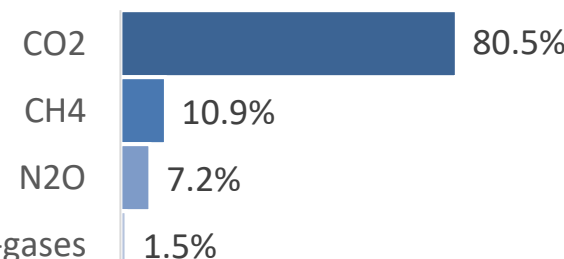


GHG Emissions per GDP

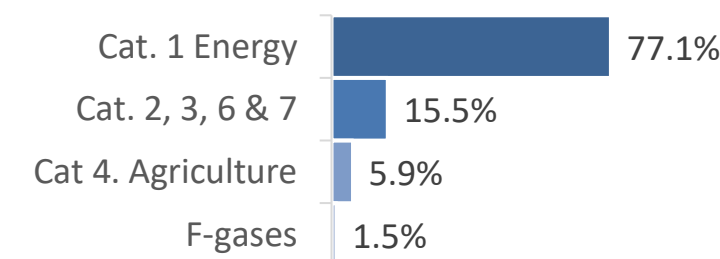


2015 Total GHG Emissions excl. LULUCF

By Gas:



By Sector:



GHG Emissions

	1990	2000	2005	2010	2015	2020		2025		2030	
(MtCO2eq/yr in GWP AR4)						low	high	low	high	low	high
Assumed LULUCF Accounting Credits (-)/Debits (+)											
NDC covered LULUCF Emissions											
NDC covered Emissions excl. LULUCF	8	10	10	7	7	10	9	12	12	13	13
Total GHG excl. LULUCF	10	13	13	9	9	12	11	15	14	16	16
Total GHG incl. LULUCF	9	12	12	9	8	11	11	15	14	16	15

Relative GHG Emissions

	1990	2000	2005	2010	2015	2020		2025		2030	
Total excl. LULUCF						low	high	low	high	low	high
Relative 1990	100%	132%	133%	96%	91%	121%	120%	154%	151%	167%	163%
Relative 2000	76%	100%	101%	73%	69%	92%	91%	117%	115%	126%	124%
Relative 2005	75%	99%	100%	72%	69%	91%	90%	116%	114%	125%	123%
Relative 2010	104%	138%	138%	100%	95%	126%	125%	160%	158%	173%	170%
Relative 2015	110%	145%	146%	106%	100%	133%	132%	169%	166%	183%	179%

Per-Capita Emissions

	1990	2000	2005	2010	2015	2020		2025		2030	
Total excl. LULUCF						low	high	low	high	low	high
Population (Mio)	2	3	3	3	3	3	3	3	3	3	3
Per-Capita Emissions (tCO2eq/cap)	4.0	4.8	4.7	3.3	3.1	4.1	4.0	5.1	5.0	5.5	5.4
Relative 1990	100%	121%	118%	84%	78%	102%	101%	128%	126%	139%	136%
Relative 2000	82%	100%	98%	69%	64%	84%	83%	106%	104%	114%	112%
Relative 2005	84%	102%	100%	71%	66%	86%	85%	108%	106%	117%	115%
Relative 2010	120%	145%	142%	100%	93%	122%	120%	153%	151%	166%	162%
Relative 2015	129%	156%	152%	108%	100%	131%	130%	165%	162%	178%	175%

Data Sources:

Cat1_CO2	PRIMAPHIST17	Cat5A1_CO2	UNFCCC CRF + Nat. Comms.
Cat2367_CO2	PRIMAPHIST17	Cat5A2_CO2	UNFCCC CRF + Nat. Comms.
Cat4_CO2	PRIMAPHIST17	Cat5LtoNonFL_CO2	UNFCCC CRF + Nat. Comms.
Cat5_CO2	PRIMAPHIST17	Cat5GCMCMWM_C	UNFCCC CRF
Cat1_CH4	PRIMAPHIST17	Cat5A1ForestFires	UNFCCC Cat5 + EDGAR(IPCC Database)
Cat2367_CH4	PRIMAPHIST17	Cat5A1HWP_CO2	UNFCCC CRF + Nat. Comms.
Cat4_CH4	PRIMAPHIST17	Cat5bisA_CO2	UNFCCC CRF + NATCOMM.
Cat5_CH4	PRIMAPHIST17	Cat5bisB_CO2	UNFCCC CRF + NATCOMM.
Cat1_N2O	PRIMAPHIST17	Cat5bisC_CO2	UNFCCC CRF + NATCOMM.
Cat2367_N2O	PRIMAPHIST17	Cat5bisD_CO2	UNFCCC CRF + NATCOMM.
Cat4_N2O	PRIMAPHIST17	Cat5bisE_CO2	UNFCCC CRF + NATCOMM.
Cat5_N2O	PRIMAPHIST17	PRO_WM_Cat5_G	UNFCCC Annex I Reports
Cat0_HFCs	PRIMAPHIST17	Metric	GWP AR4
Cat0_PFCs	PRIMAPHIST17		
Cat0_SF6	PRIMAPHIST17		
Population	UN 2015 Population Projections MEDIUM		
GDP	IMF WEO 2015, PPP adjusted GDP, constant 2009 prices...		
	IPCC WG3 Scenario IMAGE AMPERE2-550-FullTech-HST		
	PRIMAPHIST16 description: www.pik-potsdam.de/primap-live/primap-hist/		
	Gratefully acknowledged in particular: PRIMAP, CAIT, CDIAC, EDGAR, IPCC, IEA, UNEP Gap Team, AMPERE Team and comments on earlier versions, in particular by Giacomo Grassi. Errors and misjudgements are our own. Malte Meinshausen & Ryan Alexander; The "Fiji COP23" Edition was enabled through support via the BMUB project UM14 41 4060		
	This Factsheet is available at www.climatecollege.unimelb.edu.au/indc-factsheets. Check out as well: www.climateactiontracker.org, www.mitigation-contributions.org, cait.wri.org, infographics.pbl.nl/indc, live.primap.org, www.unep.org/climatechange/pledgepipeline, and our twitter feed @ClimateCollege		

climatecollege.unimelb.edu.au



Various 'fair' contributions for a global 'least-cost' 2°C path (total incl. LULUCF):

More info on www.mitigation-contributions.org

	2025 rel. 2010:	2030 rel. 2010:		2025 rel. 2010:	2030 rel. 2010:
LEADER	#N/A	#N/A	LEADER	#N/A	#N/A
CDC	#N/A	#N/A	CDC	#N/A	#N/A
ECPC50	#N/A	#N/A	ECPC50	#N/A	#N/A
ECPC90	#N/A	#N/A	ECPC90	#N/A	#N/A
GDR	#N/A	#N/A	GDR	#N/A	#N/A
INDC HIGH	59%	71%	INDC HIGH	71%	75%
INDC LOW	62%	75%	INDC LOW	75%	75%

"Fair" contributions for a global 'least-cost' 2°C track:

- LEADER **Leader**
- CDC **Common-but-diff. per-cap. convergence**
- ECPC50 **Eq. cum. Per-capita since 1950**
- ECPC90 **Eq. cum. Per-capita since 1990**
- GDR **Greenhouse Development Rights**
- #N/A **No available data**