

Shown: 2025 & 2030: Min/max of unconditional and conditional targets

Shown are averages for low and high or conditional and unconditional INDCs and their inter-extrapolations

Paris Agreement ratified on: 04/11/2016

Per-Capita Emissions in 2030 rel. 2015 (excl. LULUCF): **+16%**

Jordan

NDC 2025

NDC 2030

2015 World Rank

2025 World Rank

2030 World Rank

Share of World Emissions excl. LULUCF (Rank):

0.1% #99

0.1% #98

0.1% #96

Per-Capita Emissions (tCO2eq/cap)

4.5t #99

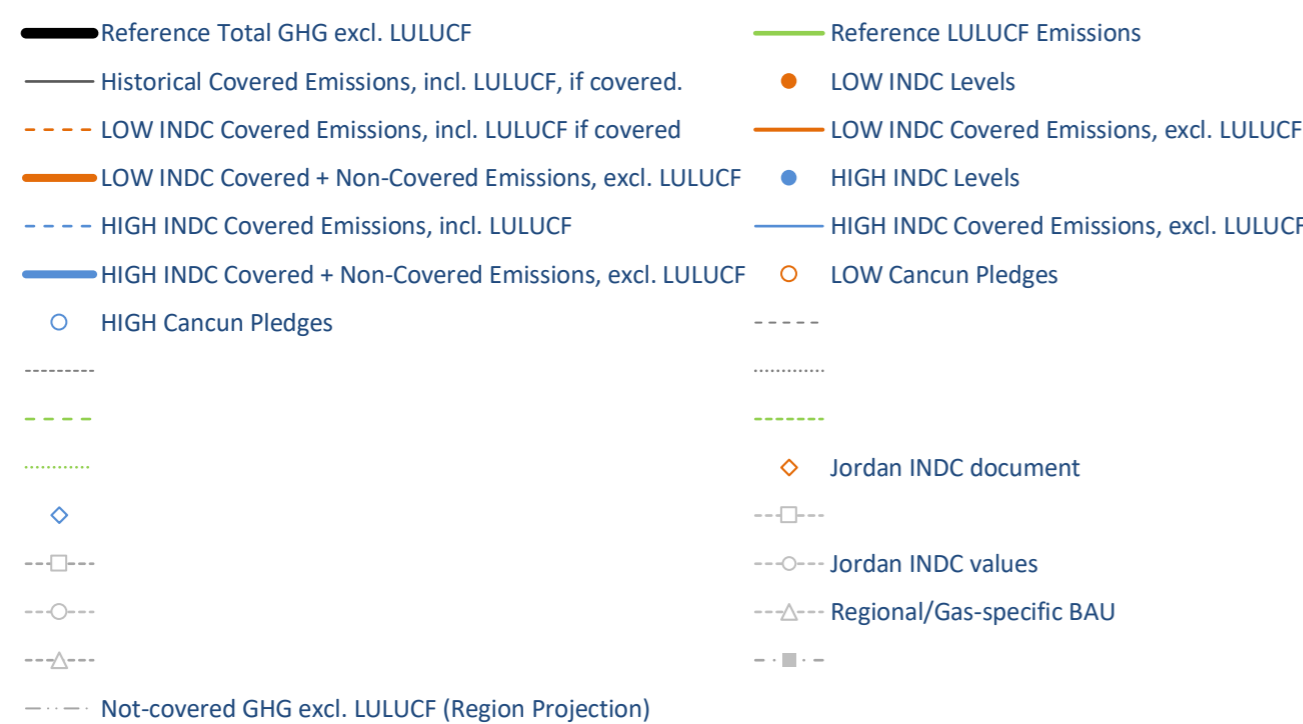
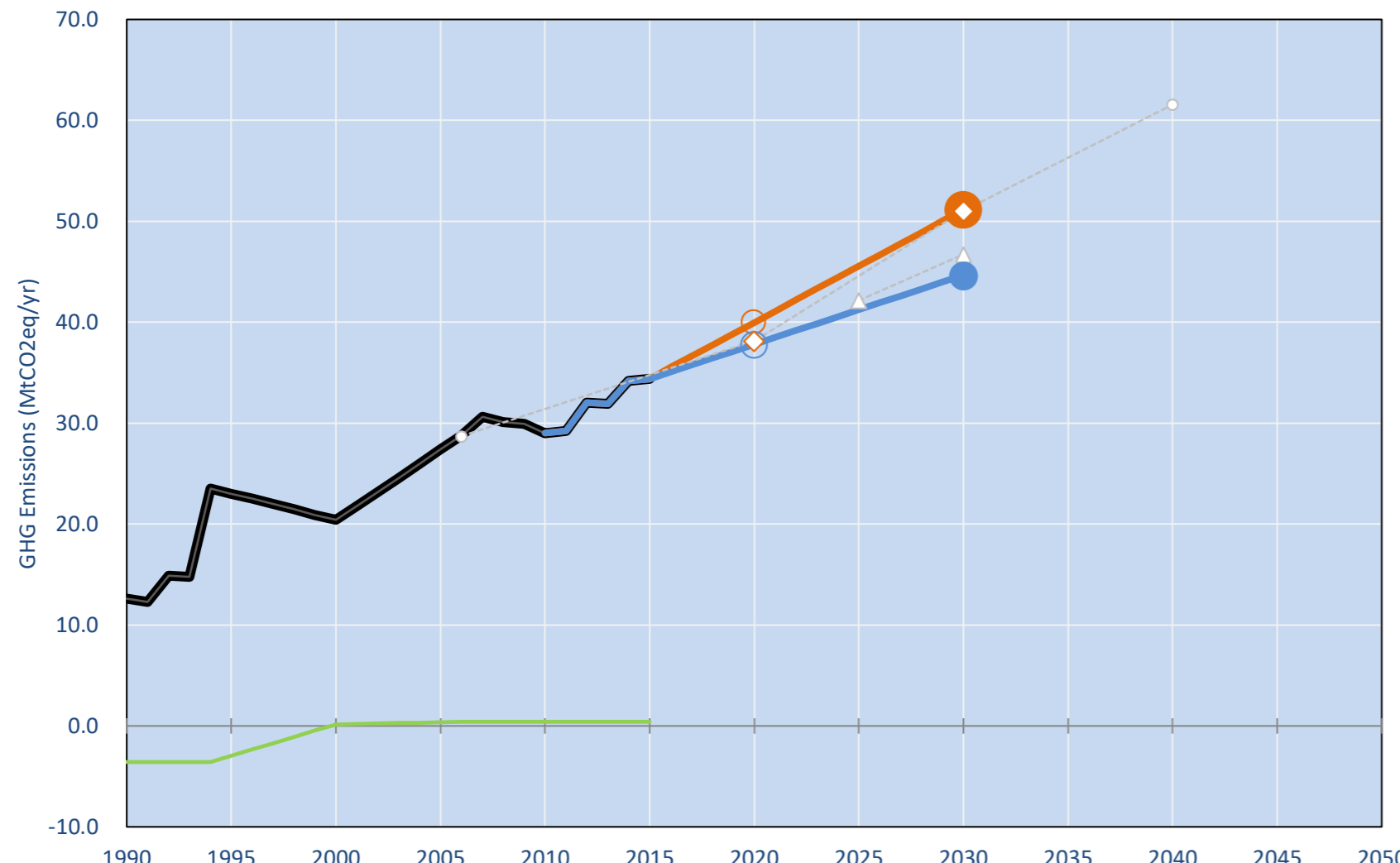
5.1t #92

5.3t #89

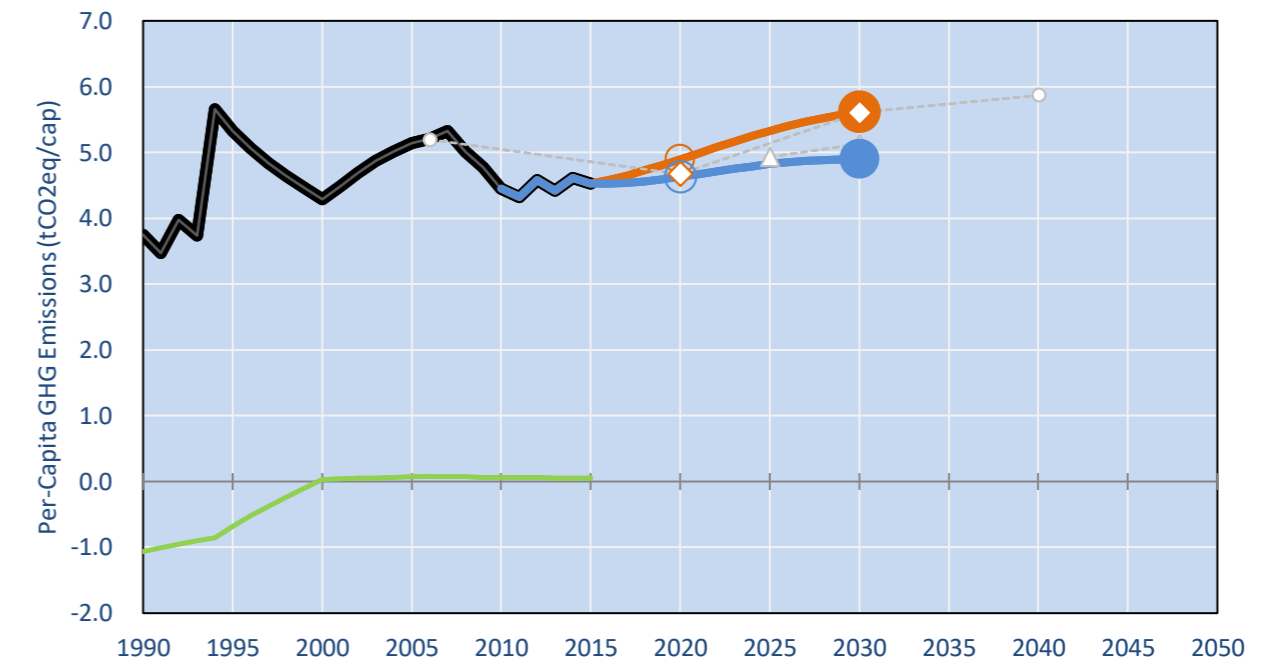
NDC: Reduction of GHG emissions by 1.5% by 2030 compared to BAUConditional: additional 12.5% reduction subject to financial aid and support of implementation. (GWP SAR)

INDC Submitted: 10/09/2015

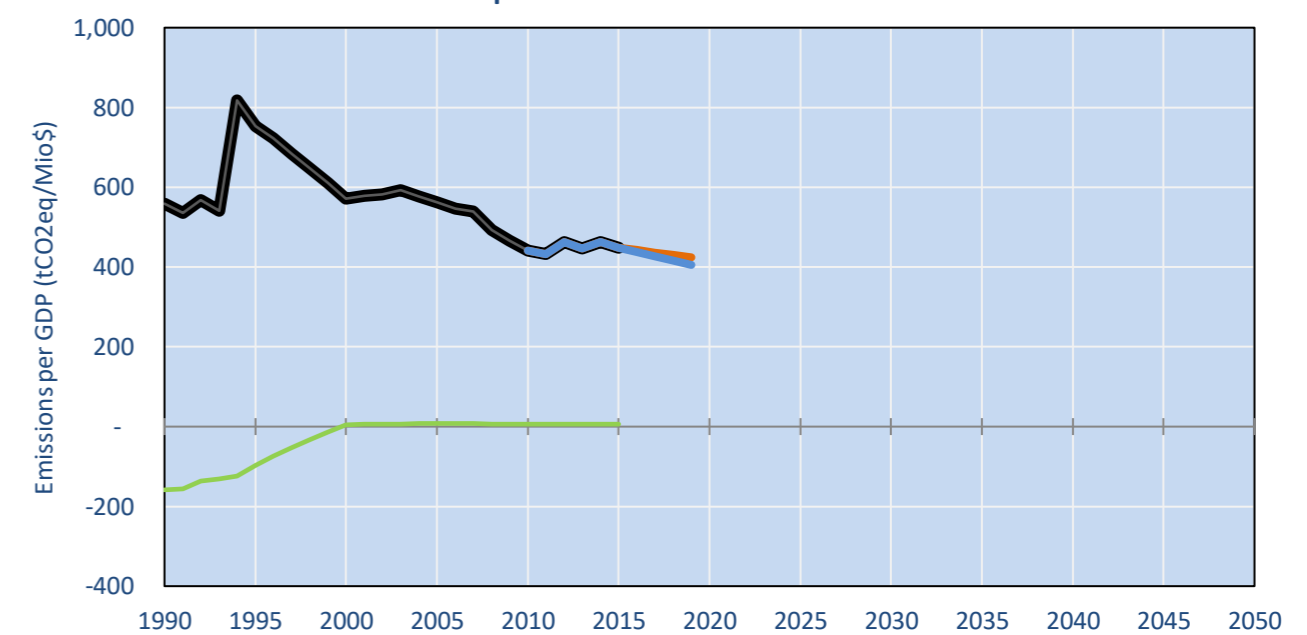
GHG Emissions



Per-Capita Emissions

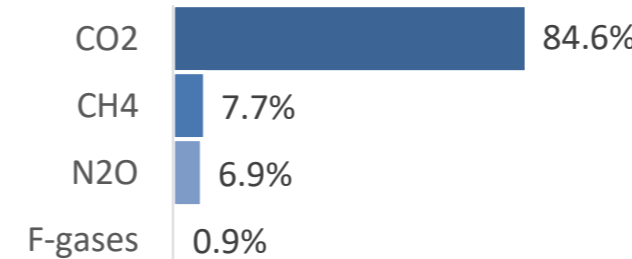


GHG Emissions per GDP

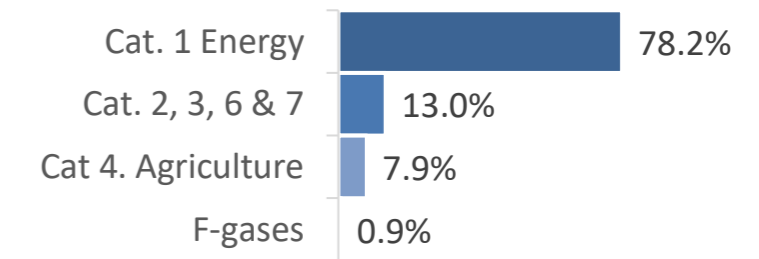


2015 Total GHG Emissions excl. LULUCF

By Gas:



By Sector:



GHG Emissions

	1990	2000	2005	2010	2015	2020	2025	2030	
(MtCO2eq/yr in GWP AR4)						low	high	low	high
Assumed LULUCF Accounting Credits (-)/Debits (+)									
NDC covered LULUCF Emissions									
NDC covered Emissions excl. LULUCF	13	20	27	29	34	40	38	46	41
Total GHG excl. LULUCF	13	20	27	29	34	40	38	46	41
Total GHG incl. LULUCF	9	21	28	29	35	40	38	46	42

Relative GHG Emissions

	1990	2000	2005	2010	2015	2020	2025	2030	
Total excl. LULUCF						low	high	low	high
Relative 1990	100%	162%	218%	230%	273%	317%	300%	362%	327%
Relative 2000	62%	100%	134%	142%	168%	196%	185%	223%	202%
Relative 2005	46%	75%	100%	106%	125%	146%	138%	166%	150%
Relative 2010	43%	70%	94%	100%	118%	138%	130%	157%	142%
Relative 2015	37%	59%	80%	84%	100%	116%	110%	132%	120%

Per-Capita Emissions

	1990	2000	2005	2010	2015	2020	2025	2030	
Total excl. LULUCF						low	high	low	high
Population (Mio)	3	5	5	7	8	8	9	9	9
Per-Capita Emissions (tCO2eq/cap)	3.8	4.3	5.1	4.5	4.5	4.9	4.6	5.3	4.8
Relative 1990	100%	114%	137%	119%	121%	131%	123%	142%	129%
Relative 2000	87%	100%	120%	104%	106%	114%	108%	113%	113%
Relative 2005	73%	83%	100%	87%	88%	95%	90%	104%	94%
Relative 2010	84%	96%	115%	100%	102%	110%	104%	120%	108%
Relative 2015	83%	95%	113%	98%	100%	108%	102%	118%	107%

Data Sources:

Cat1_CO2	PRIMAPHIST17	Cat5A1_CO2	UNFCCC CRF + Nat. Comms.
Cat2367_CO2	PRIMAPHIST17	Cat5A2_CO2	UNFCCC CRF + Nat. Comms.
Cat4_CO2	PRIMAPHIST17	Cat5LtoNonFL_CO2	UNFCCC CRF + Nat. Comms.
Cat5_CO2	PRIMAPHIST17	Cat5GMCMWMM_C	UNFCCC CRF
Cat1_CH4	PRIMAPHIST17	Cat5A1ForestFires	UNFCCC Cat5 + EDGAR(IPCC Database)
Cat2367_CH4	PRIMAPHIST17	Cat5A1HWP_CO2	UNFCCC CRF + Nat. Comms.
Cat4_CH4	PRIMAPHIST17	Cat5bisA_CO2	UNFCCC CRF + NATCOMM.
Cat5_CH4	PRIMAPHIST17	Cat5bisB_CO2	UNFCCC CRF + NATCOMM.
Cat1_N2O	PRIMAPHIST17	Cat5bisC_CO2	UNFCCC CRF + NATCOMM.
Cat2367_N2O	PRIMAPHIST17	Cat5bisD_CO2	UNFCCC CRF + NATCOMM.
Cat4_N2O	PRIMAPHIST17	Cat5bisE_CO2	UNFCCC CRF + NATCOMM.
Cat5_N2O	PRIMAPHIST17	PRO_WM_Cat5_G	UNFCCC Annex I Reports
Cat0_HFCs	PRIMAPHIST17	Metric	GWP AR4
Cat0_PFCs	PRIMAPHIST17		
Cat0_SF6	PRIMAPHIST17		
Population	UN 2015 Population Projections MEDIUM		
GDP	IMF WEO 2015, PPP adjusted GDP, constant 2009 prices...		
	IPCC WG3 Scenario IMAGE AMPERE2-550-FullTech-HST		
	PRIMAPHIST16 description: www.pik-potsdam.de/primap-live/primap-hist/		
	Gratefully acknowledged in particular: PRIMAP, CAIT, CDIAC, EDGAR, IPCC, IEA, UNEP GAP Team, AMPERE Team and comments on earlier versions, in particular by Giacomo Grassi. Errors and misjudgements are our own. Malte Meinshausen & Ryan Alexander; The "Fiji COP23" Edition was enabled through support via the BMUB project UM14 41 4060		
	This Factsheet is available at www.climatecollege.unimelb.edu.au/indc-factsheets. Check out as well: www.climateactiontracker.org, www.mitigation-contributions.org, cait.wri.org, infographics.pbl.nl/indc, live.primap.org, www.unep.org/climatechange/pledgepipeline, and our twitter feed @ClimateCollege		

climatecollege.unimelb.edu.au



Various 'fair' contributions for a global 'least-cost' 2°C path (total incl. LULUCF):

More info on www.mitigation-contributions.org

	2025 rel. 2010:	2030 rel. 2010:		2025 rel. 2010:	2030 rel. 2010:
LEADER	#N/A	#N/A	LEADER	#N/A	#N/A
CDC	#N/A	#N/A	CDC	#N/A	#N/A
ECPC50	#N/A	#N/A	ECPC50	#N/A	#N/A
ECPC90	#N/A	#N/A	ECPC90	#N/A	#N/A
GDR	#N/A	#N/A	GDR	#N/A	#N/A
INDC HIGH	41%	53%	INDC HIGH	53%	75%
INDC LOW	56%	75%	INDC LOW	75%	75%

"Fair" contributions for a global 'least-cost' 2°C track:

LEADER	Leader
CDC	Common-but-diff. per-cap. convergence
ECPC50	Eq. cum. Per-capita since 1950
ECPC90	Eq. cum. Per-capita since 1990
GDR	Greenhouse Development Rights
#N/A	No available data