



Namibia

Per-Capita Emissions in 2030 rel. 2015 (excl. LULUCF):



+15%

NDC 2025

NDC 2030

2015 World Rank

2025 World Rank

2030 World Rank

Share of World Emissions excl. LULUCF (Rank):

0.0% #132

0.0% #127

0.0% #127

Per-Capita Emissions (tCO2eq/cap)

5.1t #92

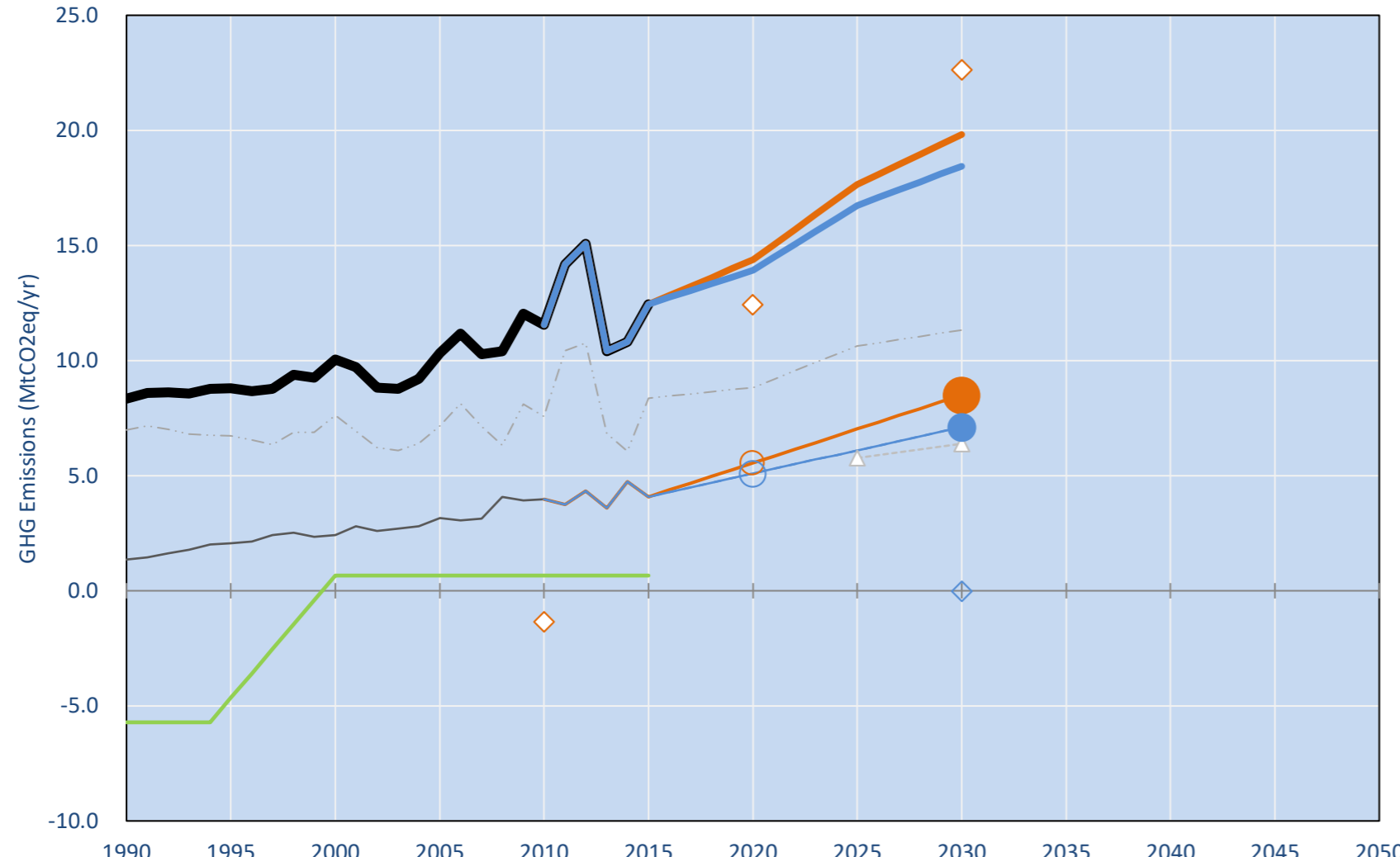
5.7t #82

5.8t #83

NDC: Aims at a reduction of about 89% of GHG emissions by 2030 compared to BAU. (GWP SAR)

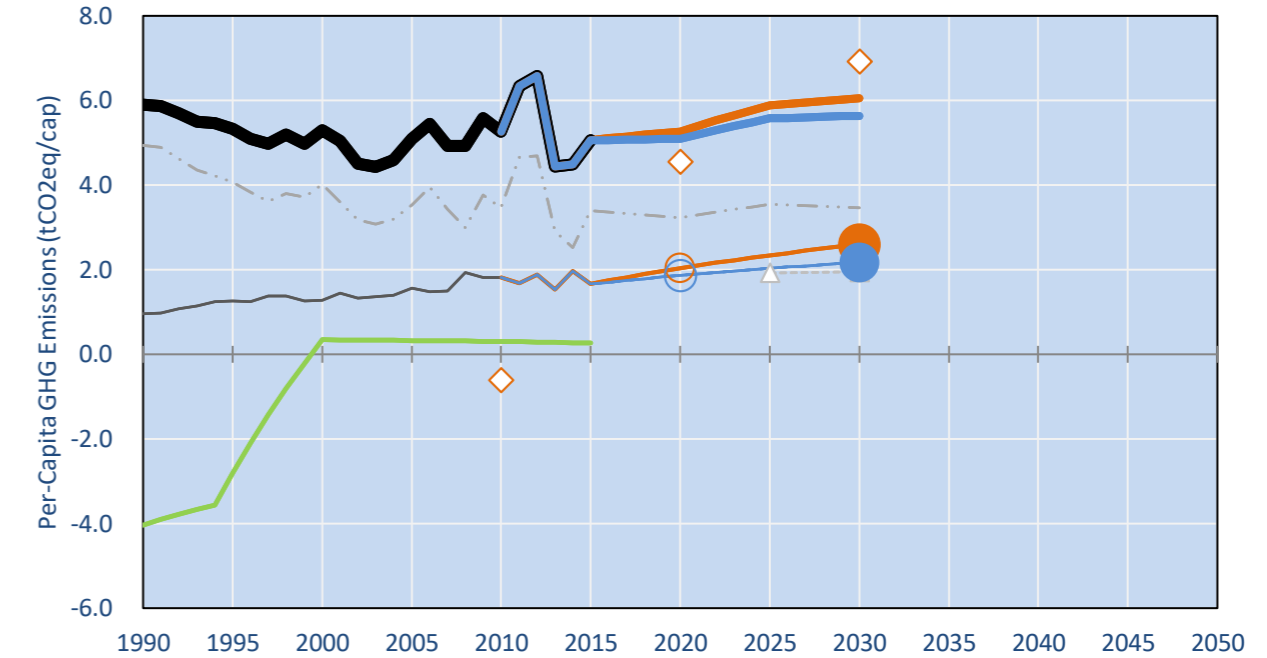
INDC Submitted: 29/09/2015

GHG Emissions

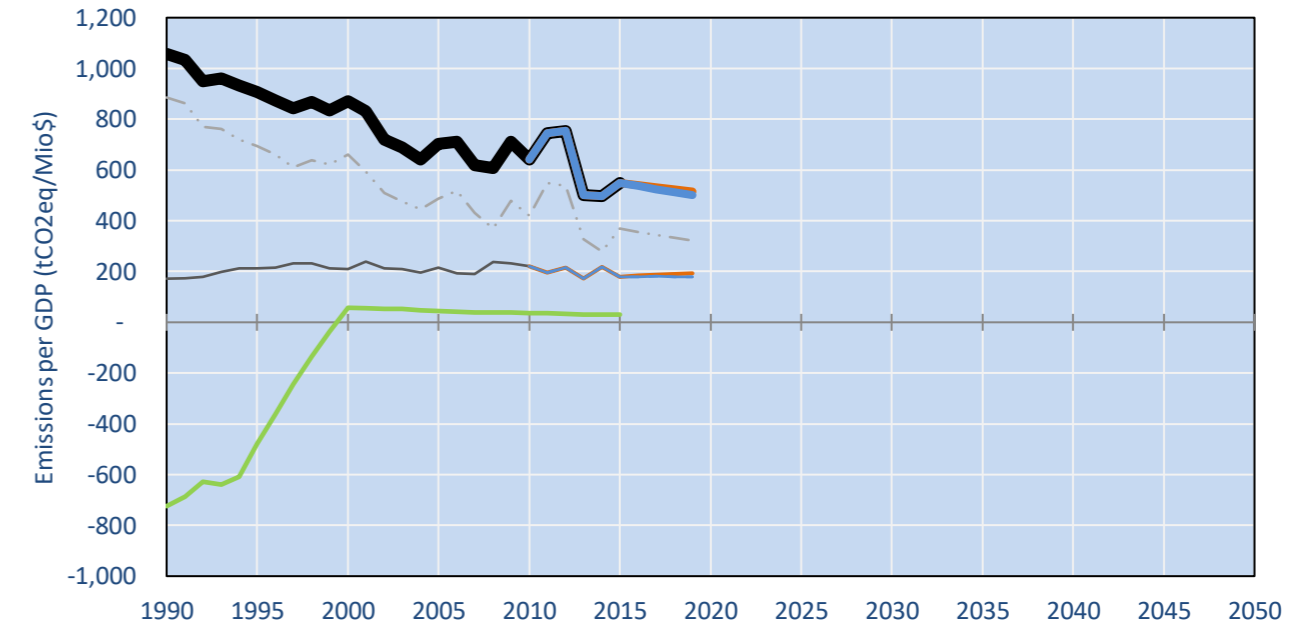


- Reference Total GHG excl. LULUCF
- Historical Covered Emissions, incl. LULUCF, if covered.
- LOW INDC Covered Emissions, incl. LULUCF if covered
- LOW INDC Covered + Non-Covered Emissions, excl. LULUCF
- HIGH INDC Covered Emissions, incl. LULUCF
- HIGH INDC Covered + Non-Covered Emissions, excl. LULUCF
- HIGH Cancun Pledges
- Reference LULUCF Emissions
- LOW INDC Levels
- LOW INDC Covered Emissions, excl. LULUCF
- HIGH INDC Levels
- HIGH INDC Covered Emissions, excl. LULUCF
- LOW Cancun Pledges
- Namibia INDC BAU GWP SAR
- Regional/Gas-specific BAU
- Not-covered GHG excl. LULUCF (Region Projection)

Per-Capita Emissions

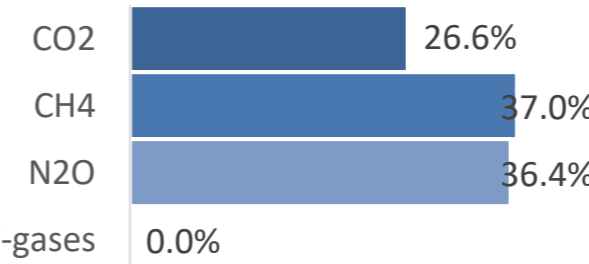


GHG Emissions per GDP

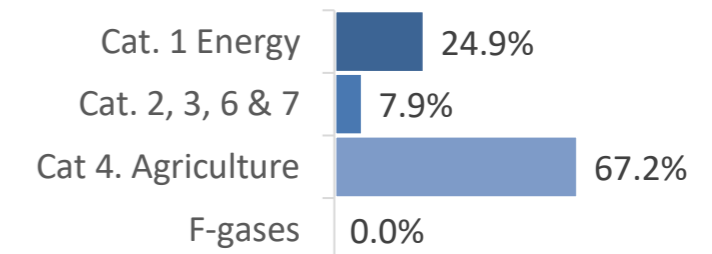


2015 Total GHG Emissions excl. LULUCF

By Gas:



By Sector:



GHG Emissions

	1990	2000	2005	2010	2015	2020		2025		2030	
(MtCO2eq/yr in GWP SAR)						low	high	low	high	low	high
Assumed LULUCF Accounting Credits (-)/Debits (+)	-	-	-	-	-	-	-	-	-	-	-
NDC covered LULUCF Emissions	-	-	-	-	-	-	-	-	-	-	-
NDC covered Emissions excl. LULUCF	1	2	3	4	4	6	5	7	6	8	7
Total GHG excl. LULUCF	8	10	10	12	12	14	14	18	17	20	18
Total GHG incl. LULUCF	3	11	11	12	13	15	15	18	17	20	19

Relative GHG Emissions

	1990	2000	2005	2010	2015	2020		2025		2030	
Total excl. LULUCF						low	high	low	high	low	high
Relative 1990	100%	121%	124%	138%	149%	172%	167%	212%	201%	237%	221%
Relative 2000	83%	100%	103%	115%	124%	143%	138%	176%	166%	197%	183%
Relative 2005	81%	98%	100%	112%	121%	139%	135%	171%	162%	192%	179%
Relative 2010	72%	87%	89%	100%	108%	124%	120%	153%	145%	172%	160%
Relative 2015	67%	81%	83%	93%	100%	116%	112%	142%	134%	159%	148%

Per-Capita Emissions

	1990	2000	2005	2010	2015	2020		2025		2030	
Total excl. LULUCF						low	high	low	high	low	high
Population (Mio)	1	2	2	2	2	3	3	3	3	3	3
Per-Capita Emissions (tCO2eq/cap)	5.9	5.3	5.1	5.3	5.1	5.3	5.1	5.9	5.6	6.1	5.6
Relative 1990	100%	90%	86%	89%	86%	89%	86%	100%	95%	103%	96%
Relative 2000	111%	100%	96%	99%	96%	99%	96%	111%	105%	114%	106%
Relative 2005	116%	104%	100%	103%	99%	103%	100%	116%	110%	119%	111%
Relative 2010	112%	101%	97%	100%	96%	100%	97%	112%	106%	115%	107%
Relative 2015	116%	105%	101%	104%	100%	104%	101%	116%	110%	120%	111%

Data Sources:

Cat1_CO2	PRIMAPHIST17	Cat5A1_CO2	UNFCCC CRF + Nat. Comms.
Cat2367_CO2	PRIMAPHIST17	Cat5A2_CO2	UNFCCC CRF + Nat. Comms.
Cat4_CO2	PRIMAPHIST17	Cat5LtoNonFL_CO2	UNFCCC CRF + Nat. Comms.
Cat5_CO2	PRIMAPHIST17	Cat5GCMCMWM_C	UNFCCC CRF
Cat1_CH4	PRIMAPHIST17	Cat5A1ForestFires	UNFCCC Cat5 + EDGAR(IPCC Database)
Cat2367_CH4	PRIMAPHIST17	Cat5A1HWP_CO2	UNFCCC CRF + Nat. Comms.
Cat4_CH4	PRIMAPHIST17	Cat5bisA_CO2	UNFCCC CRF + NATCOMM.
Cat5_CH4	PRIMAPHIST17	Cat5bisB_CO2	UNFCCC CRF + NATCOMM.
Cat1_N2O	PRIMAPHIST17	Cat5bisC_CO2	UNFCCC CRF + NATCOMM.
Cat2367_N2O	PRIMAPHIST17	Cat5bisD_CO2	UNFCCC CRF + NATCOMM.
Cat4_N2O	PRIMAPHIST17	Cat5bisE_CO2	UNFCCC CRF + NATCOMM.
Cat5_N2O	PRIMAPHIST17	PRO_WM_Cat5_G	UNFCCC Annex I Reports
Cat0_HFCs	PRIMAPHIST17	Metric	GWP SAR
Cat0_PFCs	PRIMAPHIST17		
Cat0_SF6	PRIMAPHIST17		
Population	UN 2015 Population Projections MEDIUM		
GDP	IMF WEO 2015, PPP adjusted GDP, constant 2009 prices...		
	IPCC WG3 Scenario IMAGE AMPERE2-550-FullTech-HST		
	PRIMAPHIST16 description: www.pik-potsdam.de/primap-live/primap-hist/		
	Gratefully acknowledged in particular: PRIMAP, CAIT, CDIAC, EDGAR, IPCC, IEA, UNEP Gap Team, AMPERE Team and comments on earlier versions, in particular by Giacomo Grassi. Errors and misjudgements are our own. Malte Meinshausen & Ryan Alexander; The "Fiji COP23" Edition was enabled through support via the BMUB project UM14 41 4060		
	This Factsheet is available at www.climatecollege.unimelb.edu.au/indc-factsheets. Check out as well: www.climateactiontracker.org, www.mitigation-contributions.org, cait.wri.org, infographics.pbl.nl/indc, live.primap.org, www.unep.org/climatechange/pledgepipeline, and our twitter feed @ClimateCollege		

climatecollege.unimelb.edu.au



Various 'fair' contributions for a global 'least-cost' 2°C path (total incl. LULUCF):

	2025 rel. 2010:	2030 rel. 2010:	
LEADER	#N/A	LEADER	#N/A
CDC	23%	CDC	16%
ECPC50	7%	ECPC50	3%
ECPC90	22%	ECPC90	21%
GDR	9%	GDR	9%
INDC HIGH	42%	INDC HIGH	56%
INDC LOW	50%	INDC LOW	68%



Shown fair contributions only indicative

"Fair" contributions for a global 'least-cost' 2°C track:

- LEADER Leader
- CDC Common-but-diff. per-cap. convergence
- ECPC50 Eq. cum. Per-capita since 1950
- ECPC90 Eq. cum. Per-capita since 1990
- GDR Greenhouse Development Rights
- #N/A No available data