

Paris Agreement ratified on: 18/04/2016

Panama

Per-Capita Emissions in 2030 rel. 2015 (excl. LULUCF): **+8%**

NDC 2025

NDC 2030

2015 World Rank

2025 World Rank

2030 World Rank

Share of World Emissions excl. LULUCF (Rank):

0.0% #127

0.0% #124

0.0% #125

Per-Capita Emissions (tCO₂eq/cap)

4t #105

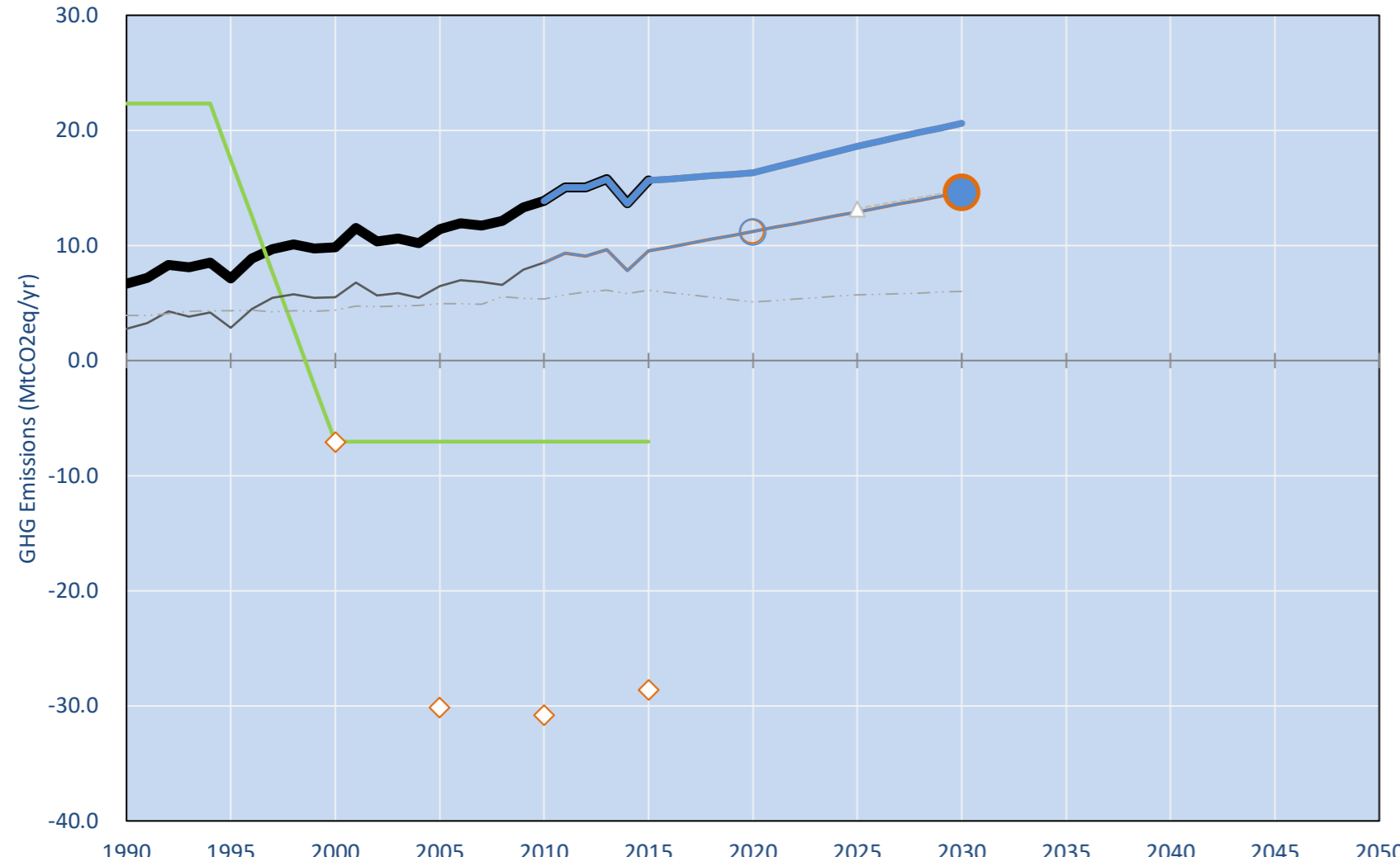
4.1t #106

4.3t #106

NDC: 15/30% share of non-conventional renewables in energy sector by 2030/50. 10% unc. and 80% cond. increase in LULUCF sink by 2050.. (GWP unclear)

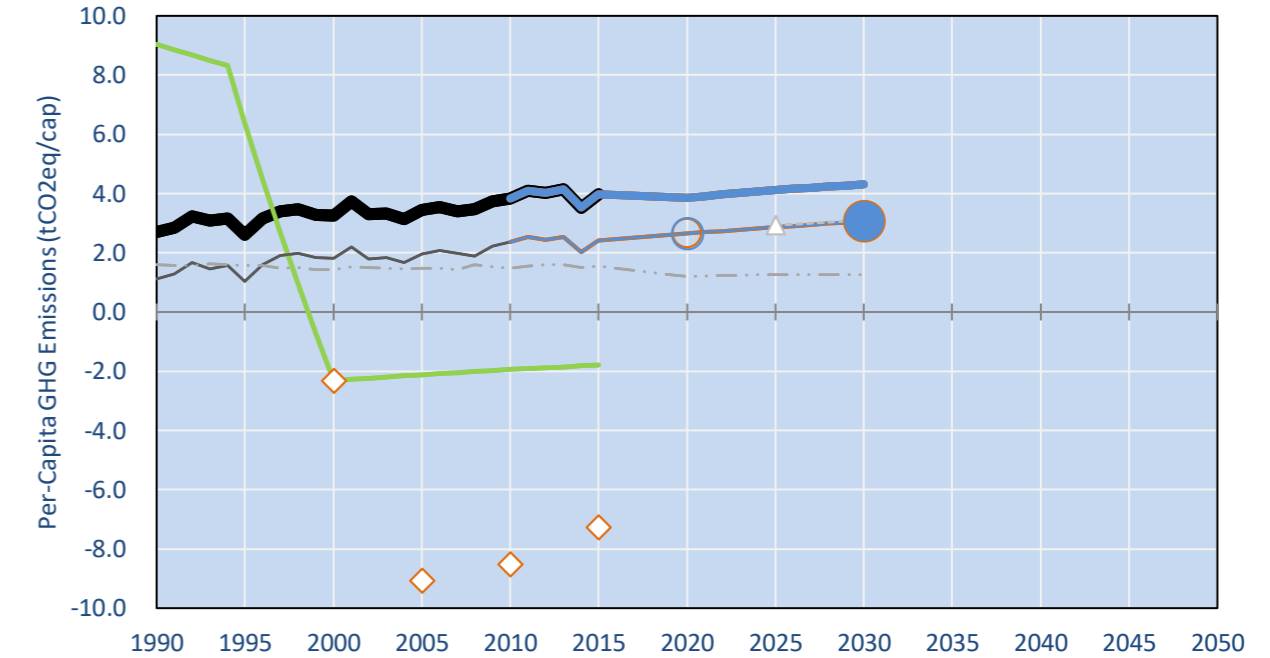
INDC Submitted: 19/04/2016

GHG Emissions

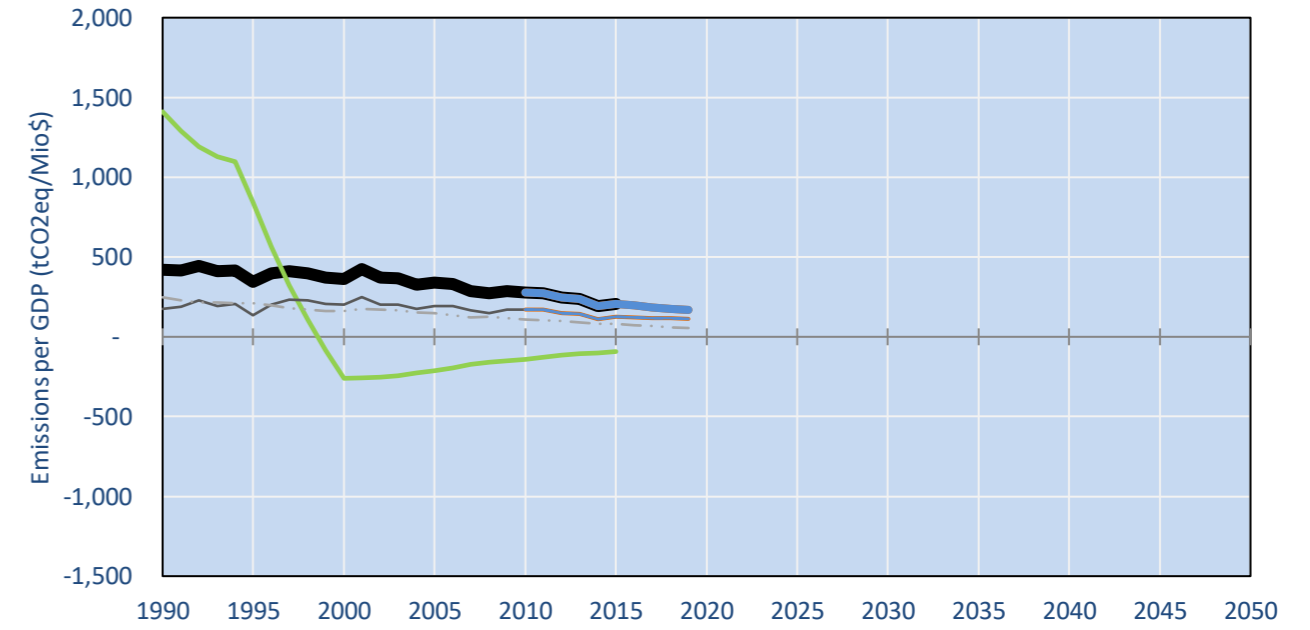


- Reference Total GHG excl. LULUCF
- Historical Covered Emissions, incl. LULUCF, if covered.
- LOW INDC Covered Emissions, incl. LULUCF if covered
- LOW INDC Covered + Non-Covered Emissions, excl. LULUCF
- HIGH INDC Covered Emissions, incl. LULUCF
- HIGH INDC Covered + Non-Covered Emissions, excl. LULUCF
- HIGH Cancun Pledges
- Reference LULUCF Emissions
- LOW INDC Levels
- LOW INDC Covered Emissions, excl. LULUCF
- HIGH INDC Levels
- HIGH INDC Covered Emissions, excl. LULUCF
- LOW Cancun Pledges
- Panama INDC historical LULUCF
- Regional/Gas-specific BAU
- Not-covered GHG excl. LULUCF (Region Projection)

Per-Capita Emissions

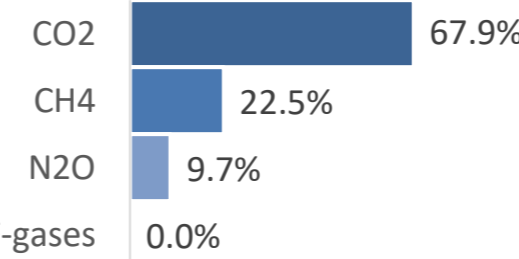


GHG Emissions per GDP

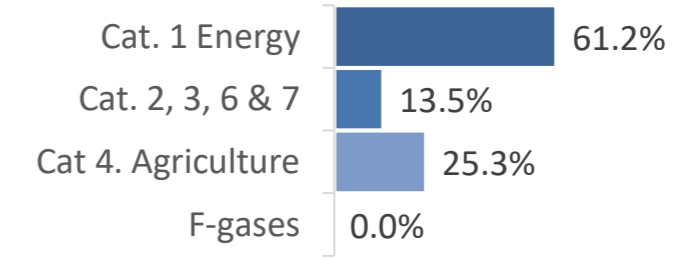


2015 Total GHG Emissions excl. LULUCF

By Gas:



By Sector:



GHG Emissions

	1990	2000	2005	2010	2015	2020	2025	2030
(MtCO ₂ eq/yr in GWP AR4)						low high	low high	low high
Assumed LULUCF Accounting Credits (-)/Debits (+)								
NDC covered LULUCF Emissions								
NDC covered Emissions excl. LULUCF	3	5	6	9	10	11	13	15
Total GHG excl. LULUCF	7	10	11	14	16	16	19	21
Total GHG incl. LULUCF	29	3	4	7	9	9	12	14

Relative GHG Emissions

	1990	2000	2005	2010	2015	2020	2025	2030
Total excl. LULUCF						low high	low high	low high
Relative 1990	100%	147%	171%	208%	234%	244%	279%	309%
Relative 2000	68%	100%	116%	141%	159%	166%	189%	209%
Relative 2005	59%	86%	100%	122%	137%	143%	163%	181%
Relative 2010	48%	71%	82%	100%	113%	118%	134%	149%
Relative 2015	43%	63%	73%	89%	100%	104%	119%	132%

Per-Capita Emissions

	1990	2000	2005	2010	2015	2020	2025	2030
Total excl. LULUCF						low high	low high	low high
Population (Mio)	2	3	3	4	4	4	5	5
Per-Capita Emissions (tCO ₂ eq/cap)	2.7	3.3	3.4	3.8	4.0	3.9	4.1	4.3
Relative 1990	100%	120%	127%	142%	147%	143%	153%	159%
Relative 2000	83%	100%	106%	118%	122%	118%	127%	133%
Relative 2005	79%	95%	100%	112%	116%	112%	120%	126%
Relative 2010	71%	85%	90%	100%	104%	101%	108%	113%
Relative 2015	68%	82%	86%	96%	100%	97%	104%	108%

Data Sources:

Cat1_CO2	PRIMAPHIST17	Cat5A1_CO2	UNFCCC CRF + Nat. Comms.
Cat2367_CO2	PRIMAPHIST17	Cat5A2_CO2	UNFCCC CRF + Nat. Comms.
Cat4_CO2	PRIMAPHIST17	Cat5LtoNonFL_CO2	UNFCCC CRF + Nat. Comms.
Cat5_CO2	PRIMAPHIST17	Cat5GMCMWMM_C	UNFCCC CRF
Cat1_CH4	PRIMAPHIST17	Cat5A1ForestFires	UNFCCC Cat5 + EDGAR(IPCC Database)
Cat2367_CH4	PRIMAPHIST17	Cat5A1HWP_CO2	UNFCCC CRF + Nat. Comms.
Cat4_CH4	PRIMAPHIST17	Cat5bisA_CO2	UNFCCC CRF + NATCOMM.
Cat5_CH4	PRIMAPHIST17	Cat5bisB_CO2	UNFCCC CRF + NATCOMM.
Cat1_N2O	PRIMAPHIST17	Cat5bisC_CO2	UNFCCC CRF + NATCOMM.
Cat2367_N2O	PRIMAPHIST17	Cat5bisD_CO2	UNFCCC CRF + NATCOMM.
Cat4_N2O	PRIMAPHIST17	Cat5bisE_CO2	UNFCCC CRF + NATCOMM.
Cat5_N2O	PRIMAPHIST17	PRO_WM_Cat5_G	UNFCCC Annex I Reports
Cat0_HFCs	PRIMAPHIST17	Metric	GWP AR4
Cat0_PFCs	PRIMAPHIST17		
Cat0_SF6	PRIMAPHIST17		
Population	UN 2015 Population Projections MEDIUM		
GDP	IMF WEO 2015, PPP adjusted GDP, constant 2009 prices...		
	IPCC WG3 Scenario IMAGE AMPERE2-550-FullTech-HST		
	PRIMAPHIST16 description: www.pik-potsdam.de/primap-live/primap-hist/		
	Gratefully acknowledged in particular: PRIMAP, CAIT, CDIAC, EDGAR, IPCC, IEA, UNEP GAP Team, AMPERE Team and comments on earlier versions, in particular by Giacomo Grassi. Errors and misjudgements are our own. Malte Meinshausen & Ryan Alexander; The "Fiji COP23" Edition was enabled through support via the BMUB project UM14 41 4060		
	This Factsheet is available at www.climatecollege.unimelb.edu.au/indc-factsheets. Check out as well: www.climateactiontracker.org, www.mitigation-contributions.org, cait.wri.org, infographics.pbl.nl/indc, live.primap.org, www.unep.org/climatechange/pledgepipeline, and our twitter feed @ClimateCollege		



Various 'fair' contributions for a global 'least-cost' 2°C path (total incl. LULUCF):

2025 rel. 2010:	#N/A	2030 rel. 2010:	#N/A
LEADER		LEADER	
CDC	39%	CDC	34%
ECPC50	10%	ECPC50	6%
ECPC90	42%	ECPC90	44%
GDR	1%	GDR	-18%
INDC HIGH	70%	INDC HIGH	99%
INDC LOW	70%	INDC LOW	99%



Shown fair contributions only indicative

"Fair" contributions for a global 'least-cost' 2°C track:

LEADER	Leader
CDC	Common-but-diff. per-cap. convergence
ECPC50	Eq. cum. Per-capita since 1950
ECPC90	Eq. cum. Per-capita since 1990
GDR	Greenhouse Development Rights
#N/A	No available data