

# Republic of Moldova

Per-Capita Emissions in 2030 rel. 2015 (excl. LULUCF): **-14%**

NDC 2025

NDC 2030

2015 World Rank

2025 World Rank

2030 World Rank

Share of World Emissions excl. LULUCF (Rank):

0.0% #132

0.0% #144

0.0% #145

Per-Capita Emissions (tCO2eq/cap)

3.3t #116

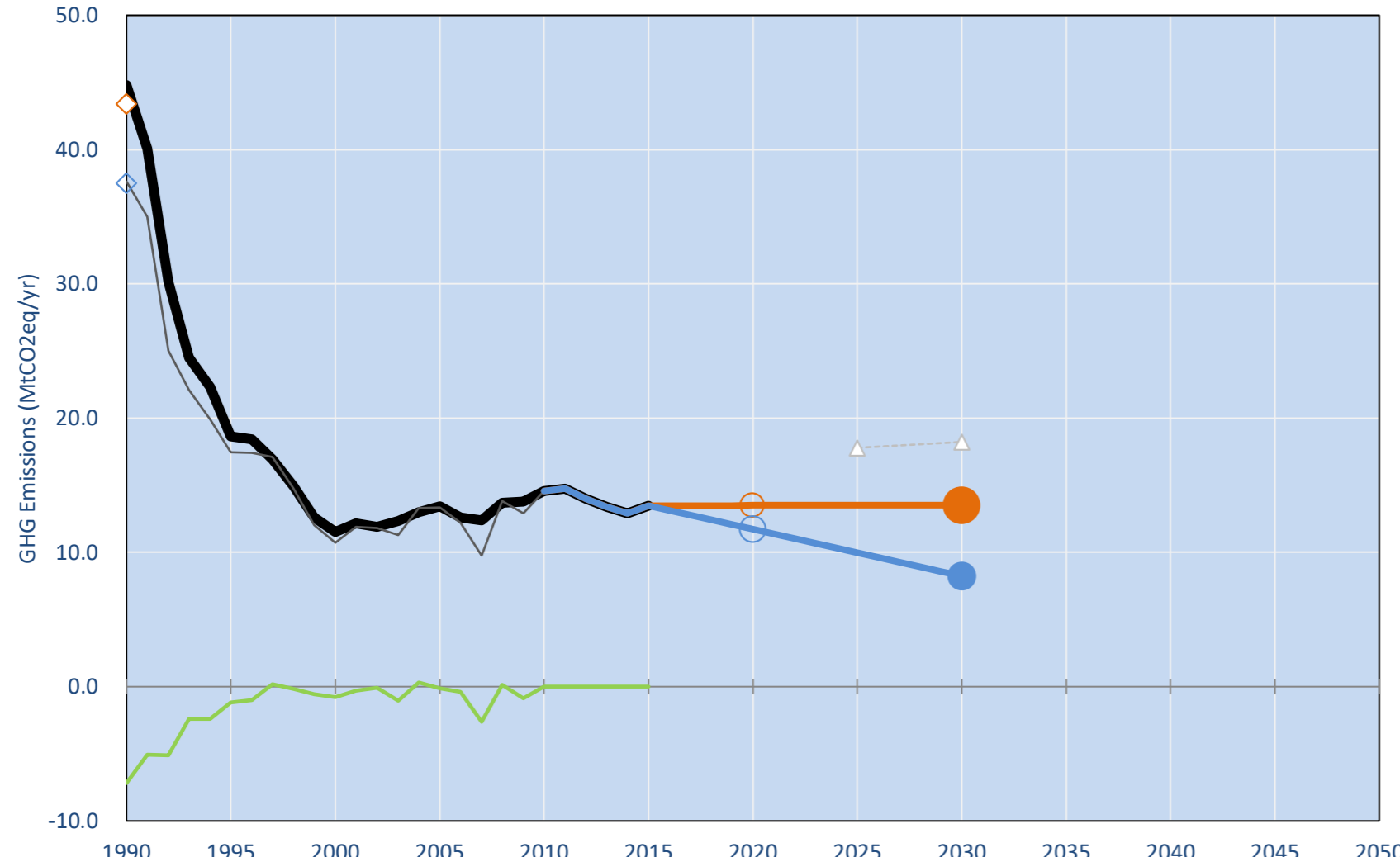
3t #127

2.8t #131

NDC: Reduce GHG emissions by 64-67% below 1990 levels in 2030 Conditional target: reduction could be increased up to 78% below 1990 levels. (GWP AR4)

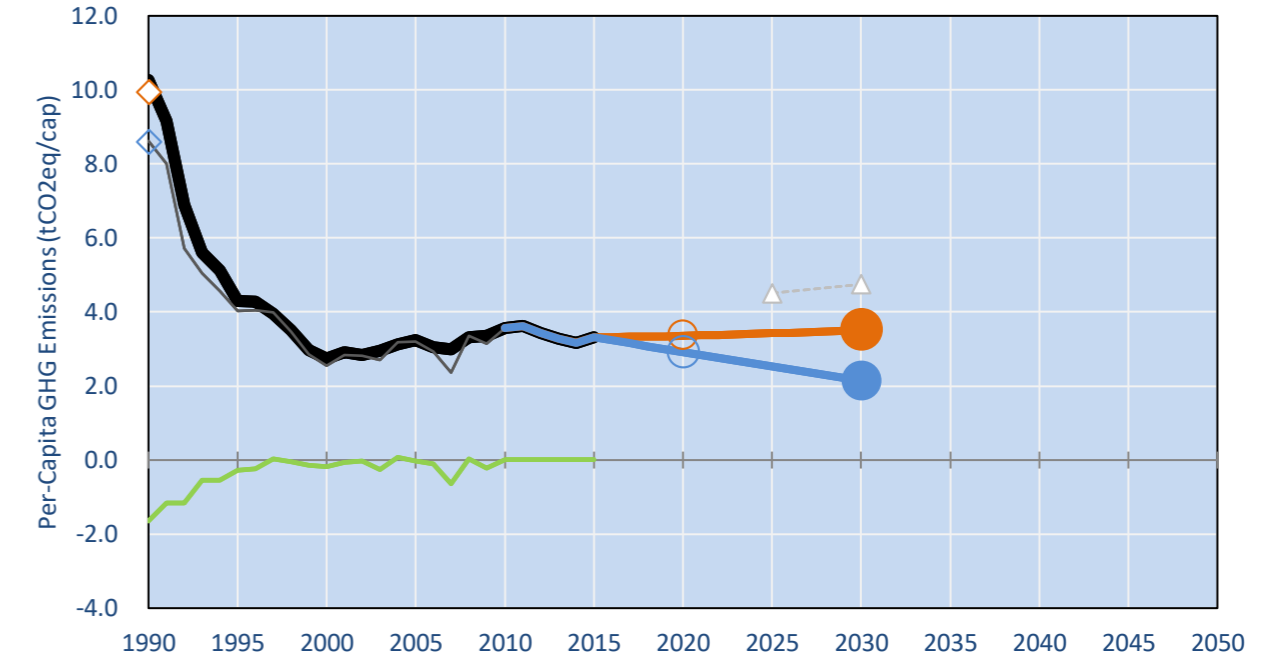
INDC Submitted: 25/09/2015

## GHG Emissions

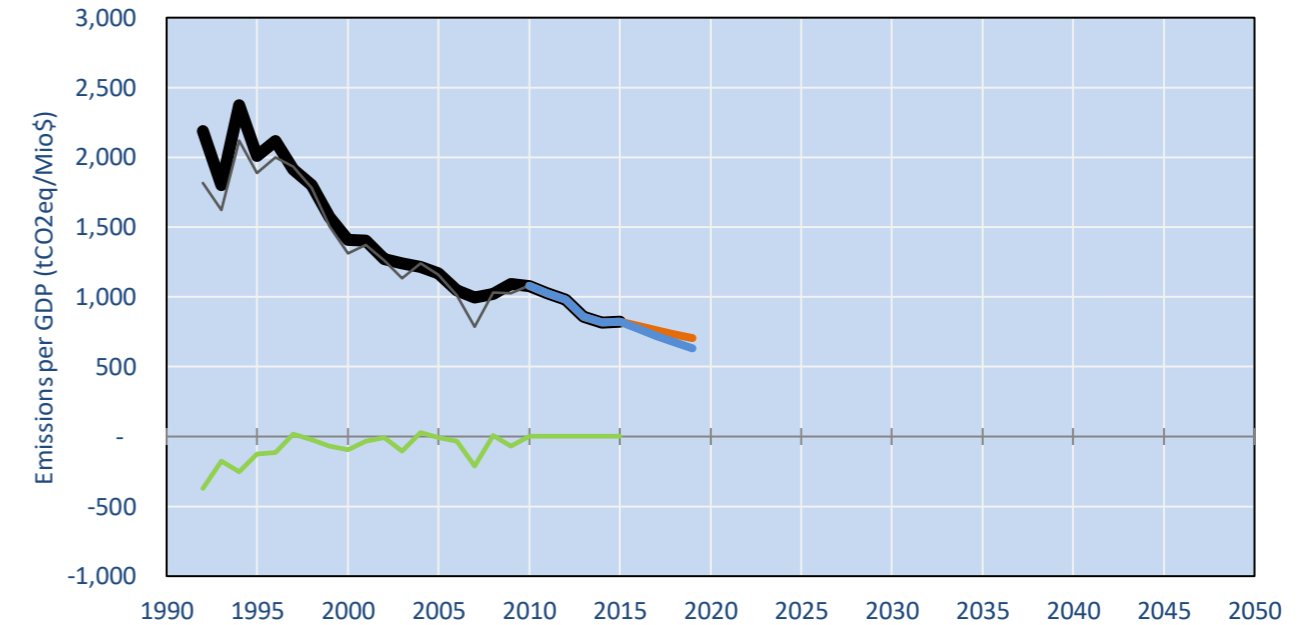


- Reference Total GHG excl. LULUCF
- Historical Covered Emissions, incl. LULUCF, if covered.
- LOW INDC Covered Emissions, incl. LULUCF if covered
- LOW INDC Covered + Non-Covered Emissions, excl. LULUCF
- HIGH INDC Covered Emissions, incl. LULUCF
- HIGH INDC Covered + Non-Covered Emissions, excl. LULUCF
- HIGH Cancun Pledges
- Reference LULUCF Emissions
- LOW INDC Levels
- LOW INDC Covered Emissions, excl. LULUCF
- HIGH INDC Levels
- HIGH INDC Covered Emissions, excl. LULUCF
- LOW Cancun Pledges
- Moldova Base Year incl. LULUCF (GWP AR4)
- Regional/Gas-specific BAU
- Not-covered GHG excl. LULUCF (Region Projection)

## Per-Capita Emissions

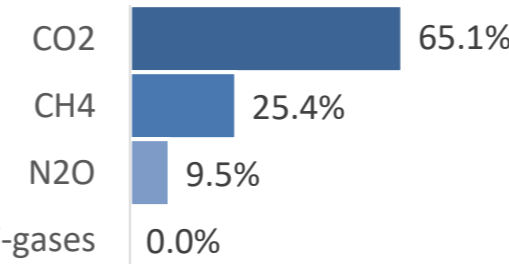


## GHG Emissions per GDP

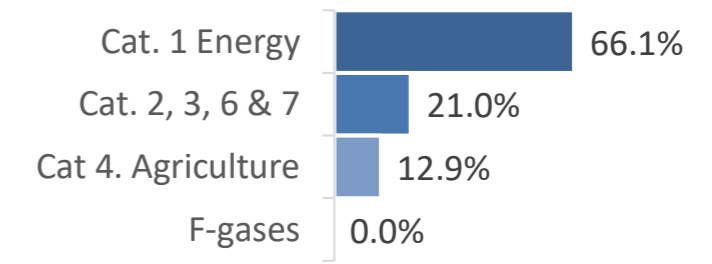


## 2015 Total GHG Emissions excl. LULUCF

By Gas:



By Sector:



## GHG Emissions

	1990	2000	2005	2010	2015	2020		2025		2030	
						low	high	low	high	low	high
(MtCO2eq/yr in GWP AR5)											
Assumed LULUCF Accounting Credits (-)/Debits (+)											
NDC covered LULUCF Emissions	-	7	-	1	0	0	0	0	0	0	0
NDC covered Emissions excl. LULUCF	45	12	13	15	13	13	12	14	10	14	8
Total GHG excl. LULUCF	45	12	13	15	13	13	12	14	10	14	8
Total GHG incl. LULUCF	38	11	13	15	14	14	12	14	10	14	8

## Relative GHG Emissions

	1990	2000	2005	2010	2015	2020		2025		2030	
						low	high	low	high	low	high
Total excl. LULUCF											
Relative 1990	100%	26%	30%	32%	30%	30%	26%	30%	22%	30%	18%
Relative 2000	389%	100%	117%	126%	117%	117%	102%	117%	87%	117%	72%
Relative 2005	333%	86%	100%	108%	100%	100%	87%	100%	74%	101%	61%
Relative 2010	308%	79%	92%	100%	93%	93%	81%	93%	69%	93%	57%
Relative 2015	332%	85%	100%	108%	100%	100%	87%	100%	74%	100%	61%

## Per-Capita Emissions

	1990	2000	2005	2010	2015	2020		2025		2030	
						low	high	low	high	low	high
Total excl. LULUCF											
Population (Mio)	4	4	4	4	4	4	4	4	4	4	4
Per-Capita Emissions (tCO2eq/cap)	10.3	2.7	3.2	3.6	3.3	3.4	2.9	3.4	2.5	3.5	2.1
Relative 1990	100%	27%	32%	35%	32%	33%	28%	33%	25%	34%	21%
Relative 2000	374%	100%	118%	130%	121%	122%	106%	125%	92%	128%	78%
Relative 2005	317%	85%	100%	110%	102%	104%	90%	106%	78%	109%	66%
Relative 2010	288%	77%	91%	100%	93%	94%	82%	96%	71%	99%	60%
Relative 2015	310%	83%	98%	107%	100%	101%	88%	103%	76%	106%	65%

## Data Sources:

Cat1_CO2	PRIMAPHIST17	Cat5A1_CO2	UNFCCC CRF + Nat. Comms.
Cat2367_CO2	PRIMAPHIST17	Cat5A2_CO2	UNFCCC CRF + Nat. Comms.
Cat4_CO2	PRIMAPHIST17	Cat5LtoNonFL_CO2	UNFCCC CRF + Nat. Comms.
Cat5_CO2	PRIMAPHIST17	Cat5GMCMWMM_C	UNFCCC CRF
Cat1_CH4	PRIMAPHIST17	Cat5A1ForestFires	UNFCCC Cat5 + EDGAR(IPCC Database)
Cat2367_CH4	PRIMAPHIST17	Cat5A1HWP_CO2	UNFCCC CRF + Nat. Comms.
Cat4_CH4	PRIMAPHIST17	Cat5bisA_CO2	UNFCCC CRF + NATCOMM.
Cat5_CH4	PRIMAPHIST17	Cat5bisB_CO2	UNFCCC CRF + NATCOMM.
Cat1_N2O	PRIMAPHIST17	Cat5bisC_CO2	UNFCCC CRF + NATCOMM.
Cat2367_N2O	PRIMAPHIST17	Cat5bisD_CO2	UNFCCC CRF + NATCOMM.
Cat4_N2O	PRIMAPHIST17	Cat5bisE_CO2	UNFCCC CRF + NATCOMM.
Cat5_N2O	PRIMAPHIST17	PRO_WM_Cat5_G	UNFCCC Annex I Reports
Cat0_HFCs	PRIMAPHIST17	Metric	GWP AR5
Cat0_PFCs	PRIMAPHIST17		
Cat0_SF6	PRIMAPHIST17		
Population	UN 2015 Population Projections MEDIUM		
GDP	IMF WEO 2015, PPP adjusted GDP, constant 2009 prices...		
	IPCC WG3 Scenario IMAGE   AMPERE2-550-FullTech-HST		
	PRIMAPHIST16 description: www.pik-potsdam.de/primap-live/primap-hist/		
	Gratefully acknowledged in particular: PRIMAP, CAIT, CDIAC, EDGAR, IPCC, IEA, UNEP Gap Team, AMPERE Team and comments on earlier versions, in particular by Giacomo Grassi. Errors and misjudgements are our own. Malte Meinshausen & Ryan Alexander; The "Fiji COP23" Edition was enabled through support via the BMUB project UM14 41 4060		
	This Factsheet is available at www.climatecollege.unimelb.edu.au/indc-factsheets. Check out as well: www.climateactiontracker.org, www.mitigation-contributions.org, cait.wri.org, infographics.pbl.nl/indc, live.primap.org, www.unep.org/climatechange/pledgepipeline, and our twitter feed @ClimateCollege		



## Various 'fair' contributions for a global 'least-cost' 2°C path (total incl. LULUCF):

## More info on www.mitigation-contributions.org

2025 rel. 2010:		2030 rel. 2010:		"Fair" contributions for a global 'least-cost' 2°C track:	
LEADER	#N/A	LEADER	#N/A	LEADER	Leader
CDC	#N/A	CDC	#N/A	CDC	Common-but-diff. per-cap. convergence
ECPC50	#N/A	ECPC50	#N/A	ECPC50	Eq. cum. Per-capita since 1950
ECPC90	#N/A	ECPC90	#N/A	ECPC90	Eq. cum. Per-capita since 1990
GDR	#N/A	GDR	#N/A	GDR	Greenhouse Development Rights
INDC HIGH	-31%	INDC HIGH	-43%	INDC HIGH	No available data
INDC LOW	-7%	INDC LOW	-7%	INDC LOW	No available data