

Russian Federation

Per-Capita Emissions in 2030 rel. 2015 (excl. LULUCF): **+24%**

INDC 2025

INDC 2030

2015 World Rank

2025 World Rank

2030 World Rank

Share of World Emissions excl. LULUCF (Rank):

5.7% #5

5.8% #5

5.9% #5

Per-Capita Emissions (tCO2eq/cap)

19t #11

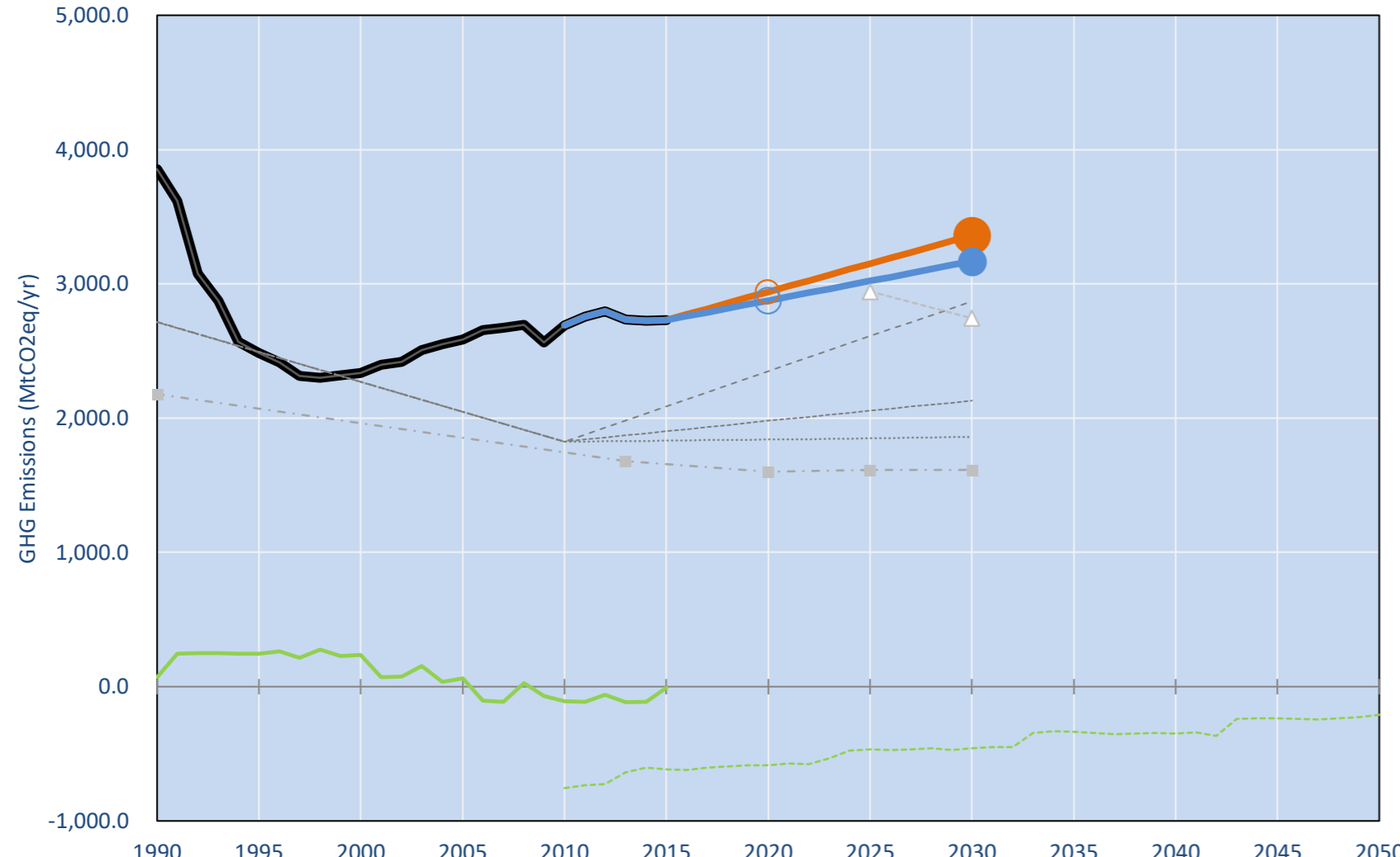
21.9t #8

23.5t #8

INDC: Limiting anthropogenic GHG to 70-75% of 1990 levels by the year 2030, subject to the maximum possible account of absorbing capacity of forests. Putin only mentioned 70% at COP21. (GWP AR4)

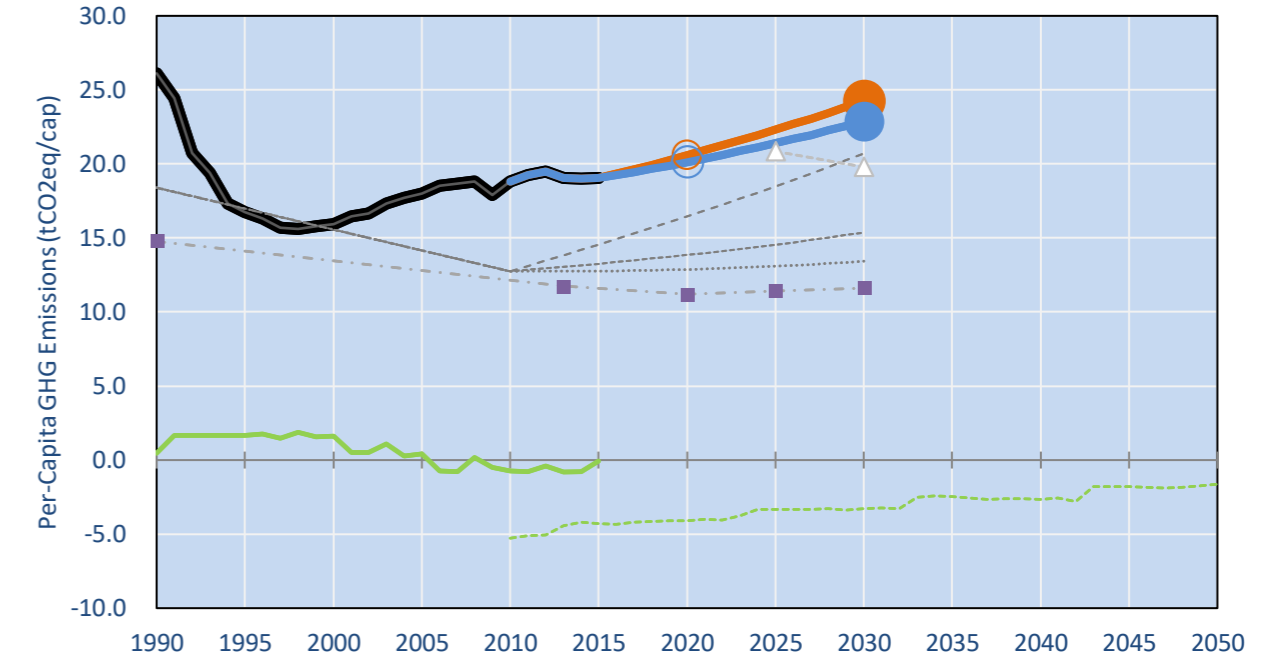
INDC Submitted: 1/04/2015

GHG Emissions

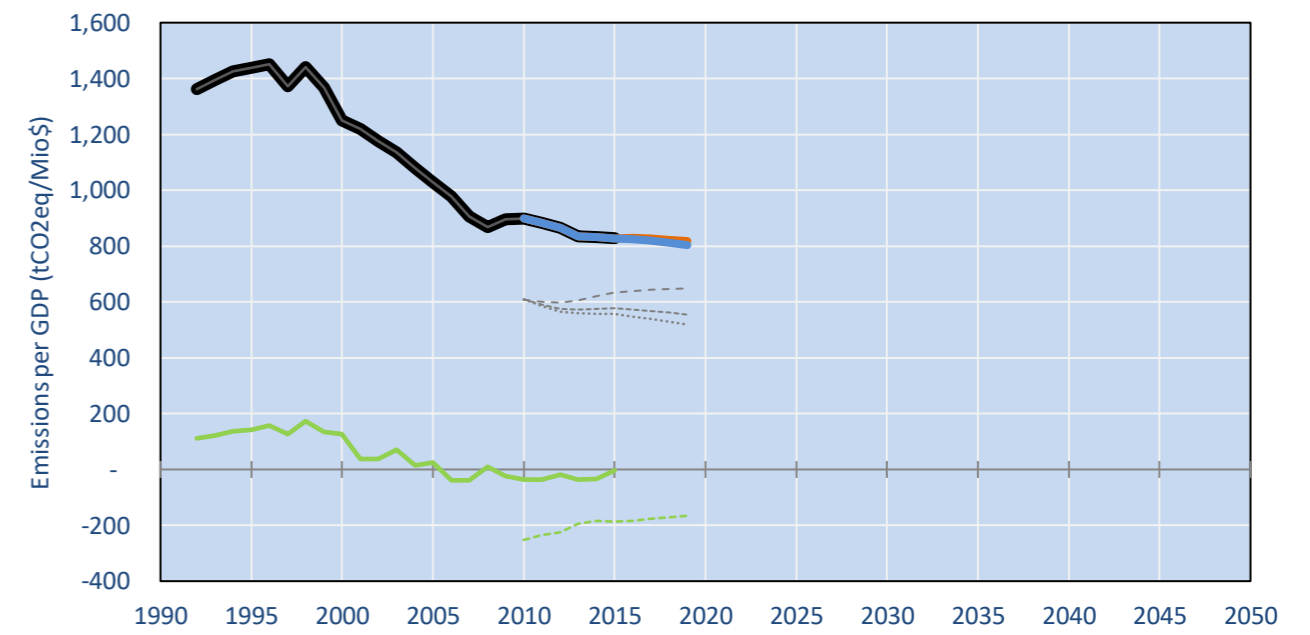


- Reference Total GHG excl. LULUCF
- Historical Covered Emissions, incl. LULUCF, if covered.
- LOW INDC Covered Emissions, incl. LULUCF if covered
- LOW INDC Covered + Non-Covered Emissions, excl. LULUCF
- HIGH INDC Covered Emissions, incl. LULUCF
- HIGH INDC Covered + Non-Covered Emissions, excl. LULUCF
- HIGH Cancun Pledges
- NM Total excl. LULUCF Projections
- WM Total excl. LULUCF Projections
- WM LULUCF Projections
- Regional/Gas-specific BAU
- Comparison II Timeseries HIGH
- Not-covered GHG excl. LULUCF (Region Projection)
- Reference LULUCF Emissions
- LOW INDC Levels
- LOW INDC Covered Emissions, excl. LULUCF
- HIGH INDC Levels
- HIGH INDC Covered Emissions, excl. LULUCF
- LOW Cancun Pledges

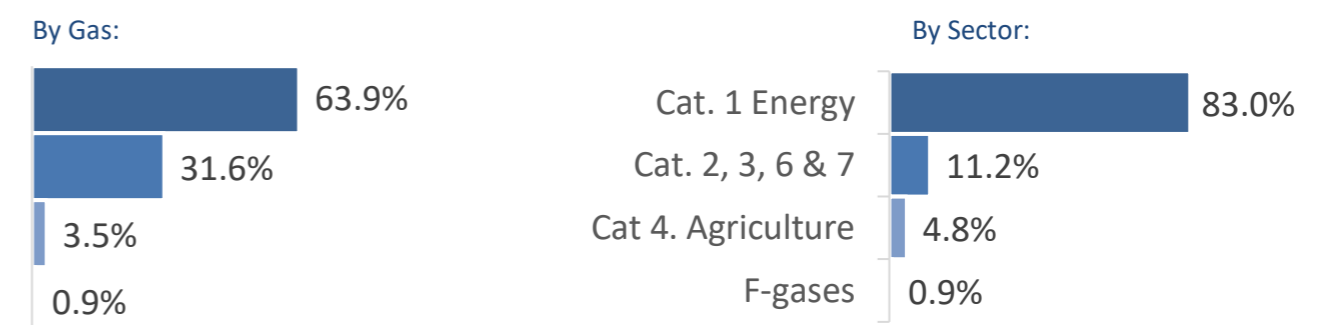
Per-Capita Emissions



GHG Emissions per GDP



2015 Total GHG Emissions excl. LULUCF



GHG Emissions

	1990	2000	2005	2010	2015	2020	2025	2030
(MtCO2eq/yr in GWP AR4)						low high	low high	low high
Assumed LULUCF Accounting Credits (-)/Debits (+)						- 368 - 368	- 480 - 470	- 470
INDC covered LULUCF Emissions								
INDC covered Emissions excl. LULUCF	3,854	2,336	2,584	2,692	2,730	2,940 2,876	3,150 3,022	3,360 3,168
Total GHG excl. LULUCF	3,854	2,336	2,584	2,692	2,730	2,940 2,876	3,150 3,022	3,360 3,168
Total GHG incl. LULUCF	3,925	2,573	2,646	2,584	2,720	2,353 2,289	2,682 2,554	2,903 2,710

Relative GHG Emissions

	1990	2000	2005	2010	2015	2020	2025	2030
Total excl. LULUCF						low high	low high	low high
Relative 1990	100%	61%	67%	70%	71%	76% 75%	82% 78%	87% 82%
Relative 2000	165%	100%	111%	115%	117%	126% 123%	135% 129%	144% 136%
Relative 2005	149%	90%	100%	104%	106%	114% 111%	122% 117%	130% 123%
Relative 2010	143%	87%	96%	100%	101%	109% 107%	117% 112%	125% 118%
Relative 2015	141%	86%	95%	99%	100%	108% 105%	115% 111%	123% 116%

Per-Capita Emissions

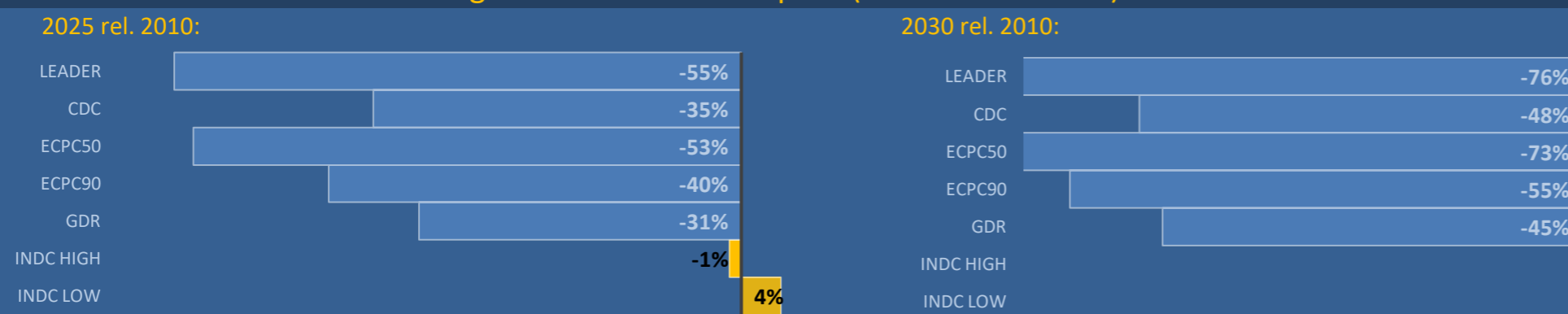
	1990	2000	2005	2010	2015	2020	2025	2030
Total excl. LULUCF						low high	low high	low high
Population (Mio)	148	146	144	143	143	143 143	141 141	139 139
Per-Capita Emissions (tCO2eq/cap)	26.1	16.0	18.0	18.8	19.0	20.6 20.1	22.3 21.4	24.2 22.8
Relative 1990	100%	61%	69%	72%	73%	79% 77%	85% 82%	93% 87%
Relative 2000	164%	100%	113%	118%	119%	129% 126%	140% 134%	152% 143%
Relative 2005	145%	89%	100%	104%	106%	114% 112%	124% 119%	135% 127%
Relative 2010	139%	85%	96%	100%	101%	109% 107%	119% 114%	129% 122%
Relative 2015	137%	84%	95%	99%	100%	108% 106%	117% 112%	127% 120%

Data Sources:

- Cat1_CO2 PRIMAPHIST17
- Cat2367_CO2 PRIMAPHIST17
- Cat4_CO2 PRIMAPHIST17
- Cat5_CO2 PRIMAPHIST17
- Cat1_CH4 PRIMAPHIST17
- Cat2367_CH4 PRIMAPHIST17
- Cat4_CH4 PRIMAPHIST17
- Cat5_CH4 PRIMAPHIST17
- Cat1_N2O PRIMAPHIST17
- Cat2367_N2O PRIMAPHIST17
- Cat4_N2O PRIMAPHIST17
- Cat5_N2O PRIMAPHIST17
- Cat0_HFCs PRIMAPHIST17
- Cat0_PFCs PRIMAPHIST17
- Cat0_SF6 PRIMAPHIST17
- Population UN 2015 Population Projections MEDIUM
- GDP IMF WEO 2015, PPP adjusted GDP, constant 2009 prices...
- IPCC WG3 Scenario IMAGE | AMPERE2-550-FullTech-HST
- PRIMAPHIST16 description: www.pik-potsdam.de/primap-live/primap-hist/
- Gratefully acknowledged in particular: PRIMAP, CAIT, CDIAC, EDGAR, IPCC, IEA, UNEP Gap Team, AMPERE Team and comments on earlier versions, in particular by Giacomo Grassi. Errors and misjudgements are our own. Malte Meinshausen & Ryan Alexander; The "Fiji COP23" Edition was enabled through support via the BMUB project UM14 41 4060
- This Factsheet is available at www.climatecollege.unimelb.edu.au/indc-factsheets. Check out as well: www.climateactiontracker.org, www.mitigation-contributions.org, cait.wri.org, infographics.pbl.nl/indc, live.primap.org, www.unep.org/climatechange/pledgepipeline, and our twitter feed @ClimateCollege
- Cat5A1_CO2 UNFCCC CRF + Nat. Comms.
- Cat5A2_CO2 UNFCCC CRF + Nat. Comms.
- Cat5LtoNonFL_CO UNFCCC CRF + Nat. Comms.
- Cat5GMCMWMM_C UNFCCC CRF + Nat. Comms.
- Cat5A1ForestFires UNFCCC Cat5 + EDGAR(IPCC Database)
- Cat5A1HWP_CO2 UNFCCC CRF + Nat. Comms.
- Cat5bisA_CO2 UNFCCC CRF + NATCOMM.
- Cat5bisB_CO2 UNFCCC CRF + NATCOMM.
- Cat5bisC_CO2 UNFCCC CRF + NATCOMM.
- Cat5bisD_CO2 UNFCCC CRF + NATCOMM.
- Cat5bisE_CO2 UNFCCC CRF + NATCOMM.
- PRO_WM_Cat5_G COUNTRY-SPECIFIC USER DATA
- Metric GWP AR4



Various 'fair' contributions for a global 'least-cost' 2°C path (total incl. LULUCF):



More info on www.mitigation-contributions.org

"Fair" contributions for a global 'least-cost' 2°C track:

- LEADER Leader
- CDC Common-but-diff. per-cap. convergence
- ECPC50 Eq. cum. Per-capita since 1950
- ECPC90 Eq. cum. Per-capita since 1990
- GDR Greenhouse Development Rights
- #N/A No available data