

Per-Capita Emissions in 2030 rel. 2015 (excl. LULUCF): **-5%**

# Sudan

NDC 2025

NDC 2030

2015 World Rank

2025 World Rank

2030 World Rank

0% rel. BAU of 62.3 Mt

Share of World Emissions excl. LULUCF (Rank):

0.2% #49

0.3% #45

0.3% #46

-6% rel. BAU of 62.3 Mt

Per-Capita Emissions (tCO2eq/cap)

3t #127

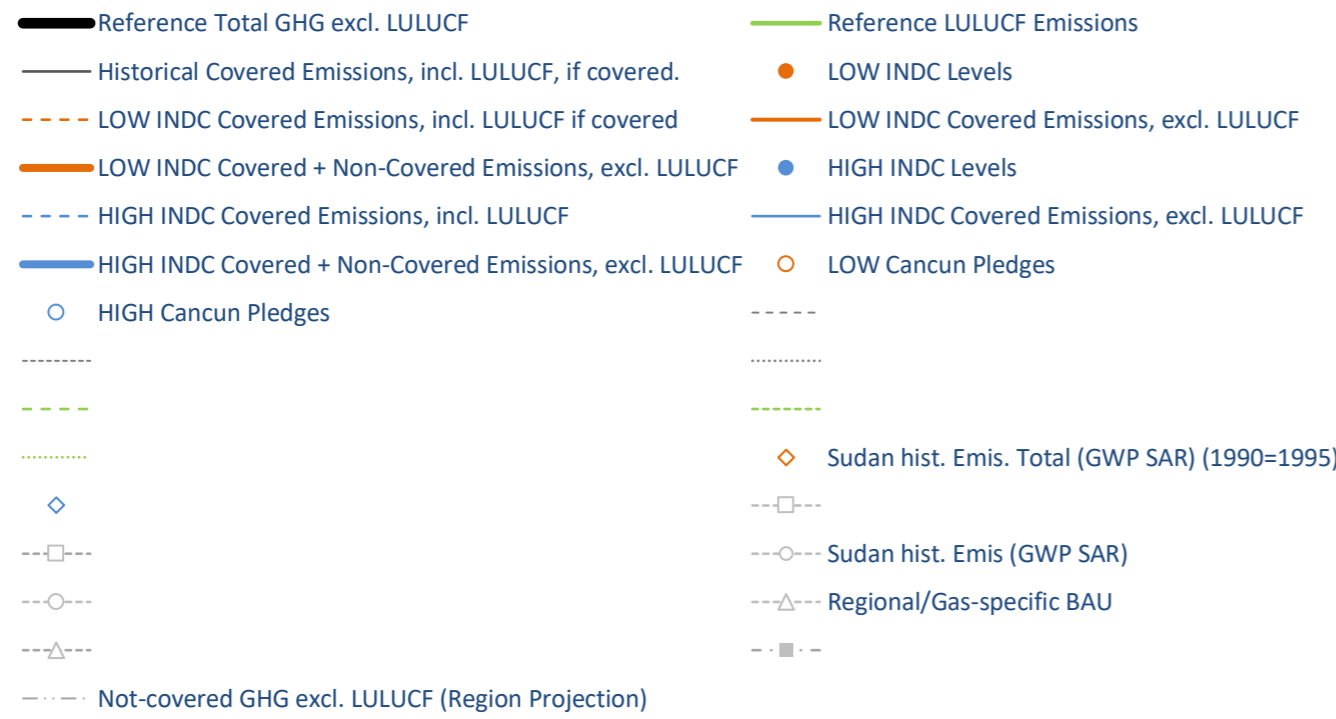
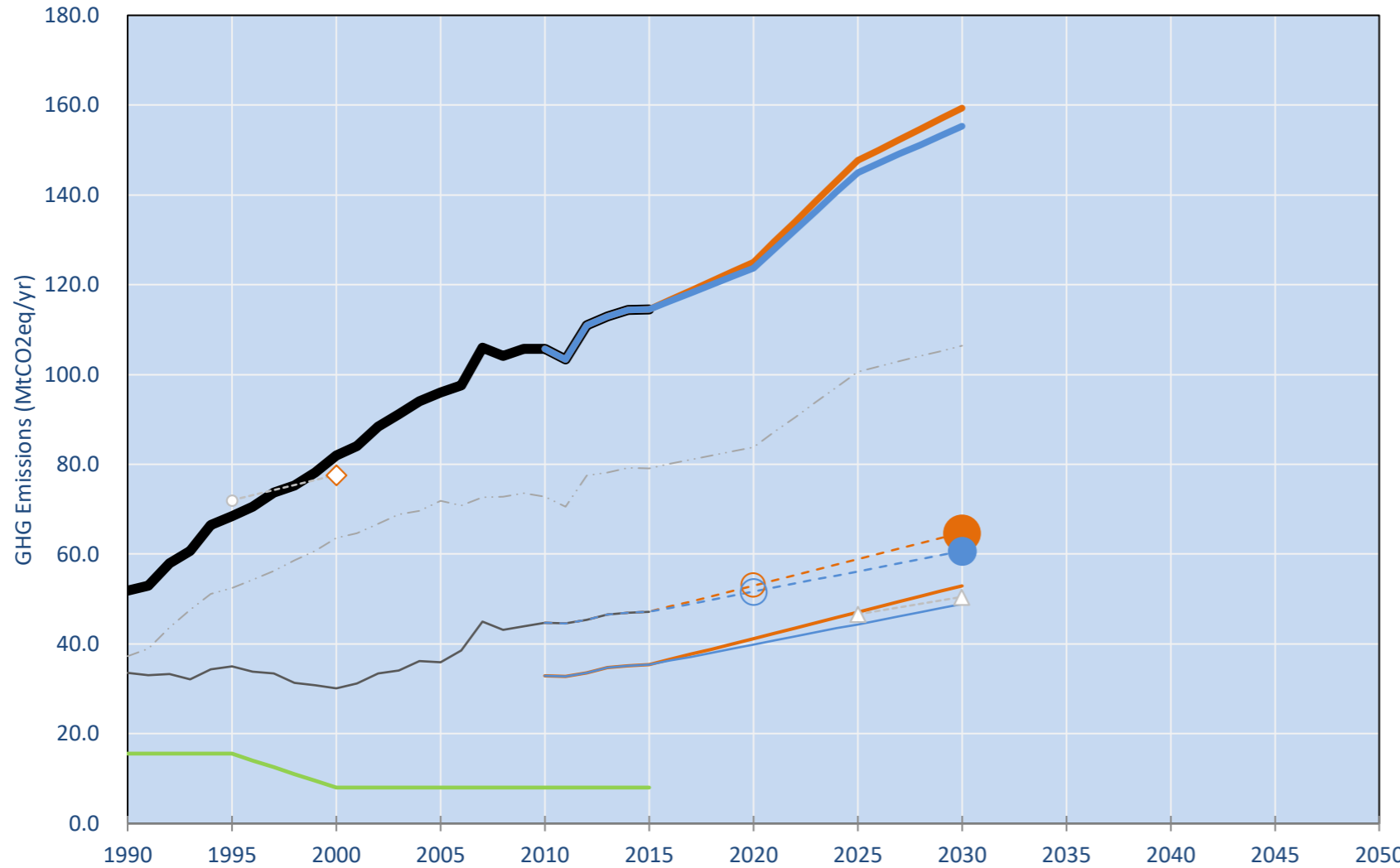
3t #125

2.9t #126

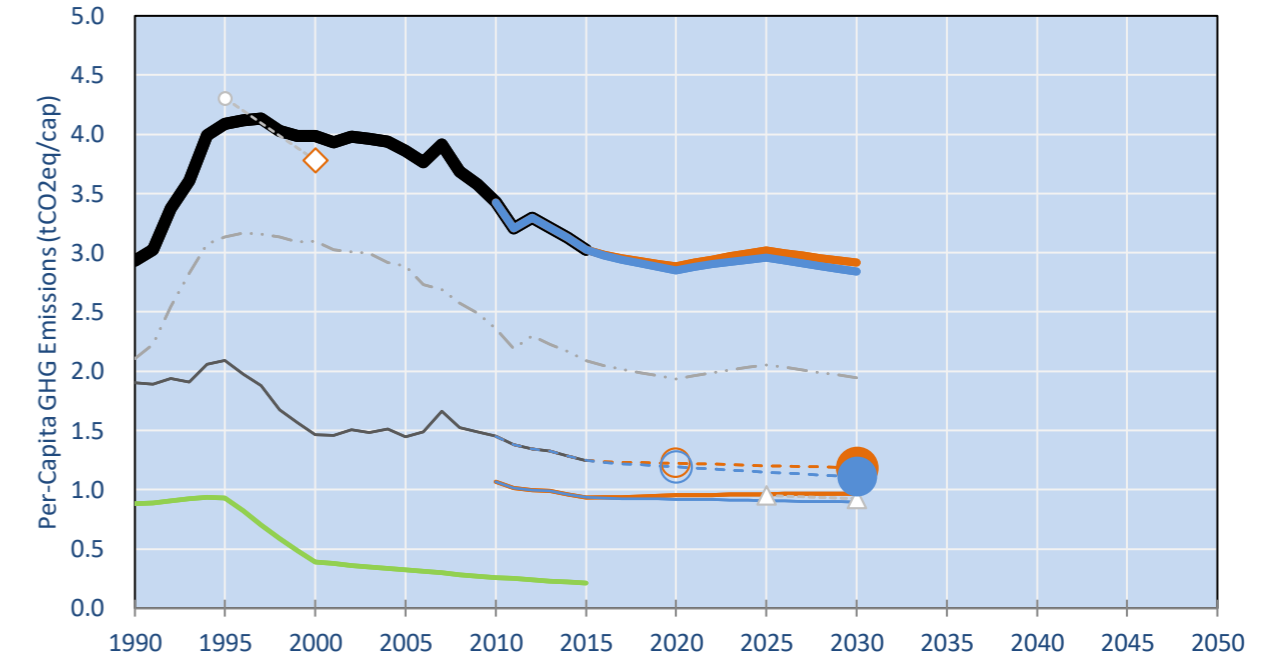
NDC: A number of policies and measures is proposed for energy, forestry and waste sector with timeframe 2025 to 2030. (GWP SAR)

INDC Submitted: 10/11/2015

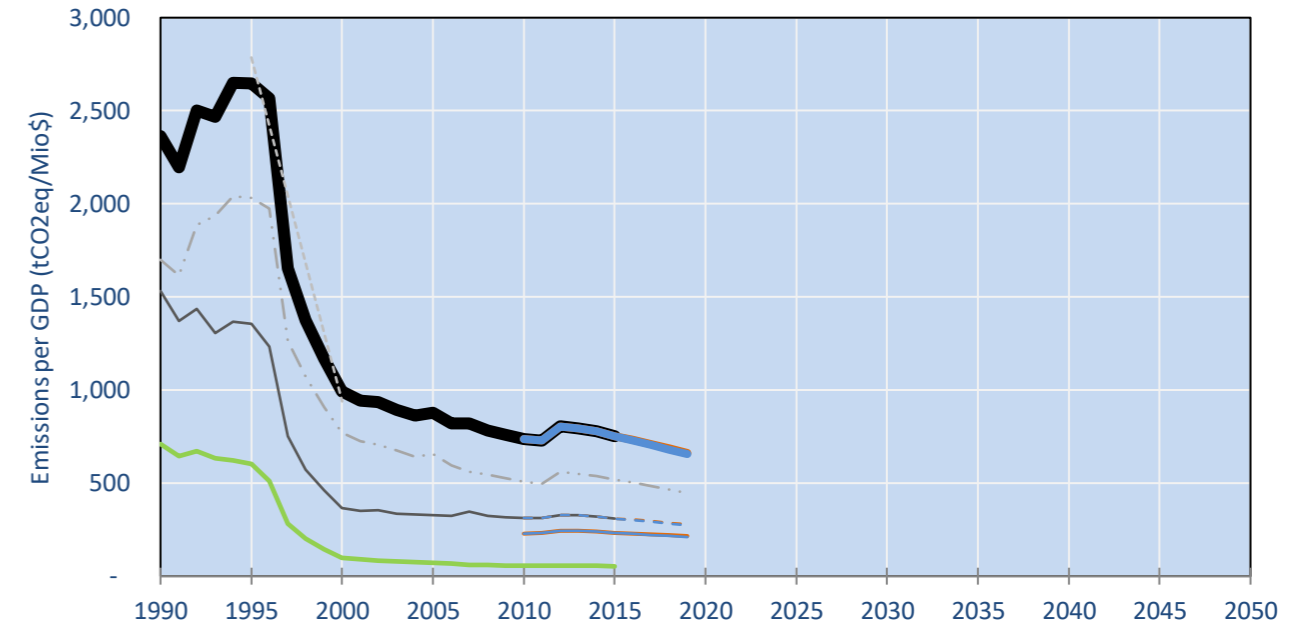
## GHG Emissions



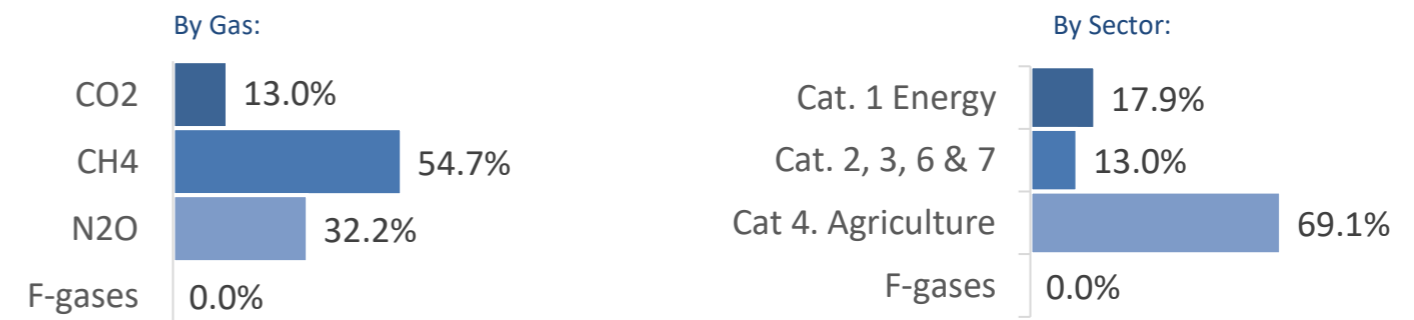
## Per-Capita Emissions



## GHG Emissions per GDP



## 2015 Total GHG Emissions excl. LULUCF



## GHG Emissions

	1990	2000	2005	2010	2015	2020		2025		2030	
						low	high	low	high	low	high
(MtCO2eq/yr in GWP AR4)											
Assumed LULUCF Accounting Credits (-)/Debits (+)											
NDC covered LULUCF Emissions	19	12	12	12	12	12	12	12	12	12	12
NDC covered Emissions excl. LULUCF	15	18	24	33	35	41	40	47	44	53	49
Total GHG excl. LULUCF	52	82	96	106	114	125	124	148	145	159	155
Total GHG incl. LULUCF	67	90	104	114	123	133	132	156	153	167	163

## Relative GHG Emissions

	1990	2000	2005	2010	2015	2020		2025		2030	
						low	high	low	high	low	high
Total excl. LULUCF											
Relative 1990	100%	158%	185%	204%	221%	241%	238%	285%	279%	307%	299%
Relative 2000	63%	100%	117%	129%	140%	153%	151%	180%	177%	194%	190%
Relative 2005	54%	85%	100%	110%	119%	130%	129%	154%	151%	166%	162%
Relative 2010	49%	78%	91%	100%	108%	118%	117%	140%	137%	151%	147%
Relative 2015	45%	72%	84%	92%	100%	109%	108%	129%	127%	139%	136%

## Per-Capita Emissions

	1990	2000	2005	2010	2015	2020		2025		2030	
						low	high	low	high	low	high
Total excl. LULUCF											
Population (Mio)	18	21	25	31	38	43	43	49	49	55	55
Per-Capita Emissions (tCO2eq/cap)	2.9	4.0	3.9	3.4	3.0	2.9	2.9	3.0	3.0	2.9	2.8
Relative 1990	100%	136%	132%	117%	103%	98%	97%	103%	101%	99%	97%
Relative 2000	74%	100%	97%	86%	76%	72%	72%	76%	74%	73%	71%
Relative 2005	76%	103%	100%	89%	78%	75%	74%	78%	77%	76%	74%
Relative 2010	86%	116%	113%	100%	88%	84%	83%	88%	86%	85%	83%
Relative 2015	97%	132%	128%	113%	100%	95%	94%	100%	98%	96%	94%

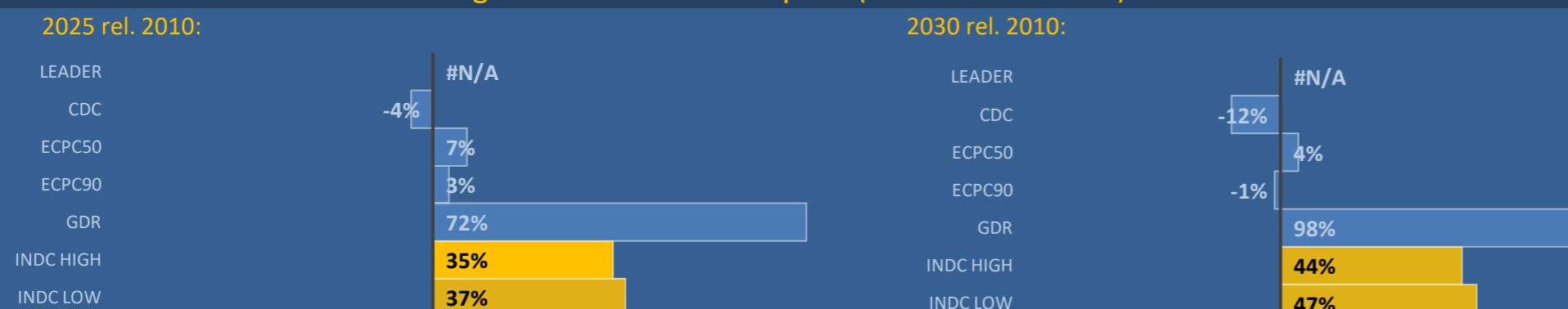
## Data Sources:

Cat1_CO2	PRIMAPHIST17	Cat5A1_CO2	UNFCCC CRF + Nat. Comms.
Cat2367_CO2	PRIMAPHIST17	Cat5A2_CO2	UNFCCC CRF + Nat. Comms.
Cat4_CO2	PRIMAPHIST17	Cat5LtoNonFL_CO2	UNFCCC CRF + Nat. Comms.
Cat5_CO2	PRIMAPHIST17	Cat5GMCMWMM_C	UNFCCC CRF
Cat1_CH4	PRIMAPHIST17	Cat5A1ForestFires	UNFCCC Cat5 + EDGAR(IPCC Database)
Cat2367_CH4	PRIMAPHIST17	Cat5A1HWP_CO2	UNFCCC CRF + Nat. Comms.
Cat4_CH4	PRIMAPHIST17	Cat5bisA_CO2	UNFCCC CRF + NATCOMM.
Cat5_CH4	PRIMAPHIST17	Cat5bisB_CO2	UNFCCC CRF + NATCOMM.
Cat1_N2O	PRIMAPHIST17	Cat5bisC_CO2	UNFCCC CRF + NATCOMM.
Cat2367_N2O	PRIMAPHIST17	Cat5bisD_CO2	UNFCCC CRF + NATCOMM.
Cat4_N2O	PRIMAPHIST17	Cat5bisE_CO2	UNFCCC CRF + NATCOMM.
Cat5_N2O	PRIMAPHIST17	PRO_WM_Cat5_G	UNFCCC Annex I Reports
Cat0_HFCs	PRIMAPHIST17	Metric	GWP AR4
Cat0_PFCs	PRIMAPHIST17		
Cat0_SF6	PRIMAPHIST17		
Population	COUNTRY-SPECIFIC USER DATA		
GDP	IMF WEO 2015, PPP adjusted GDP, constant 2009 prices...		
IPCC WG3 Scenario	IMAGE   AMPERE2-550-FullTech-HST		
PRIMAPHIST16 description:	www.pik-potsdam.de/primap-live/primap-hist/		
Gratefully acknowledged in particular:	PRIMAP, CAIT, CDIAC, EDGAR, IPCC, IEA, UNEP Gap Team, AMPERE Team and comments on earlier versions, in particular by Giacomo Grassi. Errors and misjudgements are our own. Malte Meinshausen & Ryan Alexander; The "Fiji COP23" Edition was enabled through support via the BMUB project UM14 41 4060		
This Factsheet is available at	www.climatecollege.unimelb.edu.au/indc-factsheets. Check out as well: www.climateactiontracker.org, www.mitigation-contributions.org, cait.wri.org, infographics.pbl.nl/indc, live.primap.org, www.unep.org/climatechange/pledgepipeline, and our twitter feed @ClimateCollege		

climatecollege.unimelb.edu.au



## Various 'fair' contributions for a global 'least-cost' 2°C path (total incl. LULUCF):



Shown fair contributions only indicative

"Fair" contributions for a global 'least-cost' 2°C track:

LEADER	Leader
CDC	Common-but-diff. per-cap. convergence
ECPC50	Eq. cum. Per-capita since 1950
ECPC90	Eq. cum. Per-capita since 1990
GDR	Greenhouse Development Rights
INDC HIGH	44%
INDC LOW	47%
#N/A	No available data