

Shown: 2025 & 2030: Min/max of unconditional and conditional targets

Paris Agreement ratified on: 28/06/2017

Shown are averages for low and high or conditional and unconditional INDCs and their inter-extrapolations

Togo

Per-Capita Emissions in 2030 rel. 2015 (excl. LULUCF): **+52%**

NDC 2025

NDC 2030

2015 World Rank

2025 World Rank

2030 World Rank

Share of World Emissions excl. LULUCF (Rank):

0.0% #145

0.0% #134

0.0% #128

Per-Capita Emissions (tCO2eq/cap)

1.2t #174

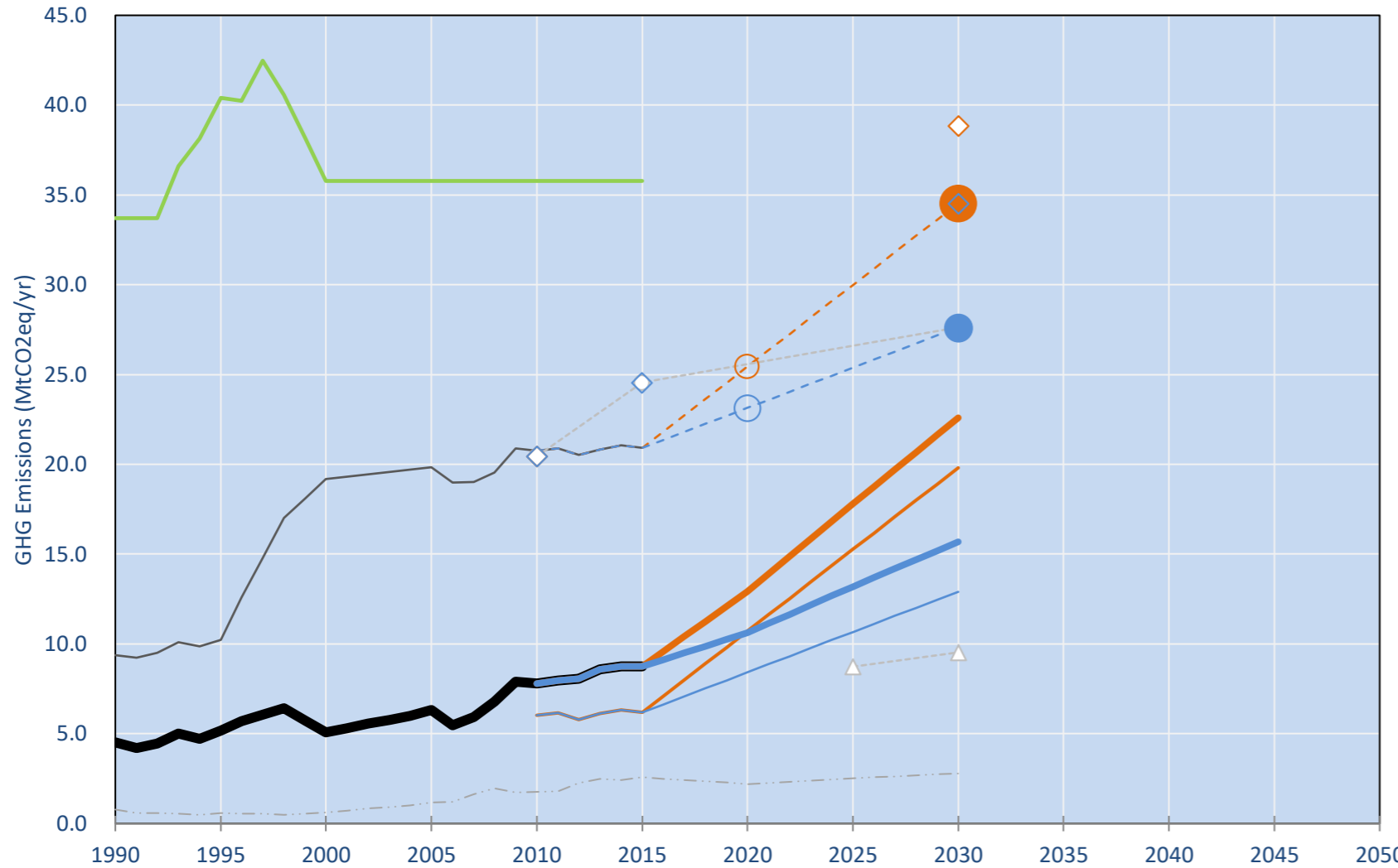
1.7t #163

1.8t #154

NDC: 11.14% GHG emission reduction compared to BAU by 2030 Conditional target: 31.14% GHG emissions reduction compared to BAU pending international support. (GWP SAR)

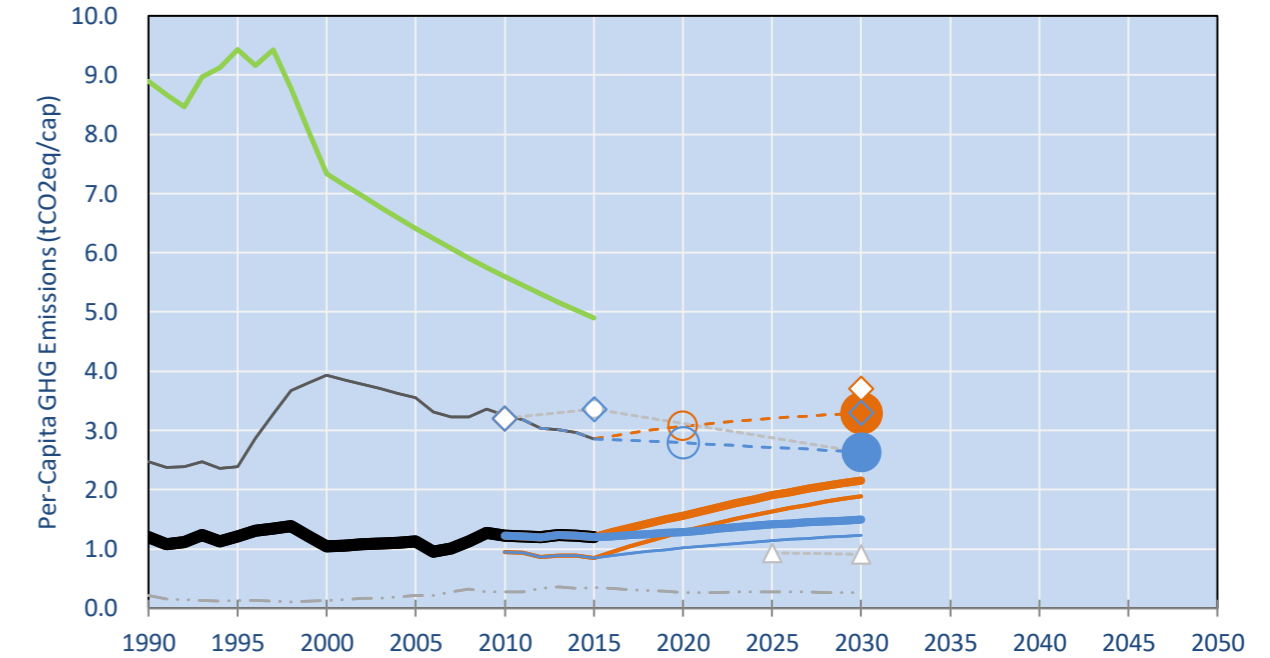
INDC Submitted: 30/09/2015

GHG Emissions

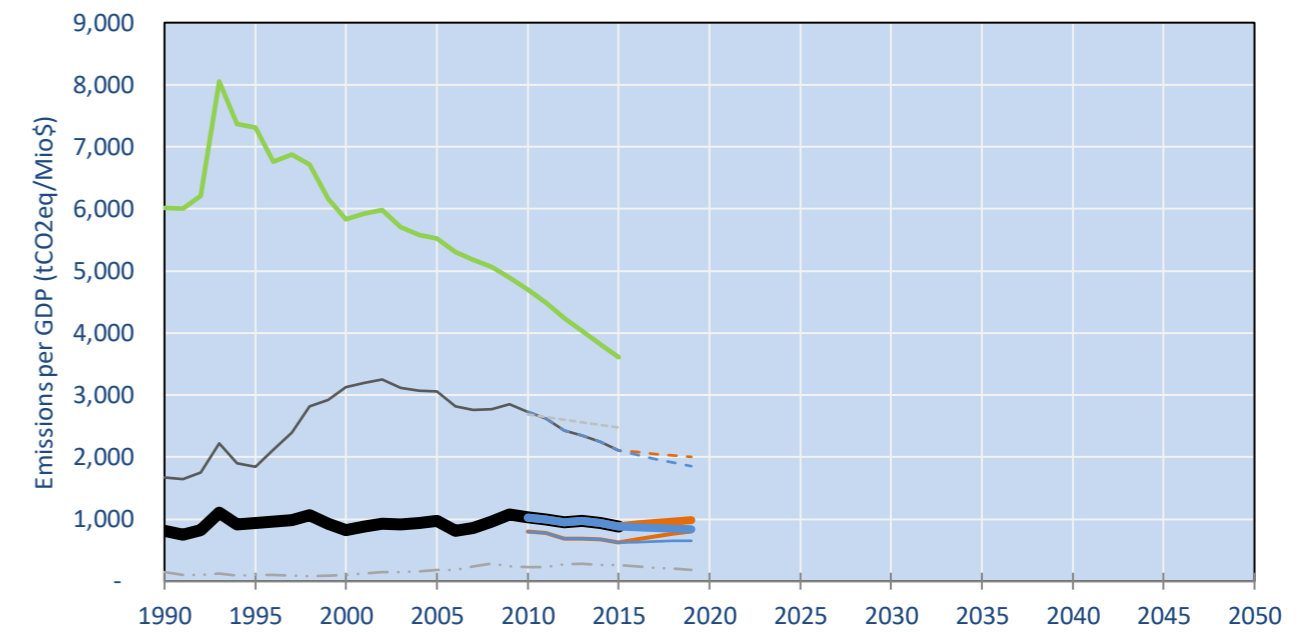


- Reference Total GHG excl. LULUCF
- Historical Covered Emissions, incl. LULUCF, if covered.
- LOW INDC Covered Emissions, incl. LULUCF if covered
- LOW INDC Covered + Non-Covered Emissions, excl. LULUCF
- HIGH INDC Covered Emissions, incl. LULUCF
- HIGH INDC Covered + Non-Covered Emissions, excl. LULUCF
- HIGH Cancun Pledges
- Togo BAU - with unconditional measures
- Togo INDC with conditional measures.
- Not-covered GHG excl. LULUCF (Region Projection)
- Reference LULUCF Emissions
- LOW INDC Levels
- LOW INDC Covered Emissions, excl. LULUCF
- HIGH INDC Levels
- HIGH INDC Covered Emissions, excl. LULUCF
- LOW Cancun Pledges
- Togo INDC Without Measures
- Regional/Gas-specific BAU

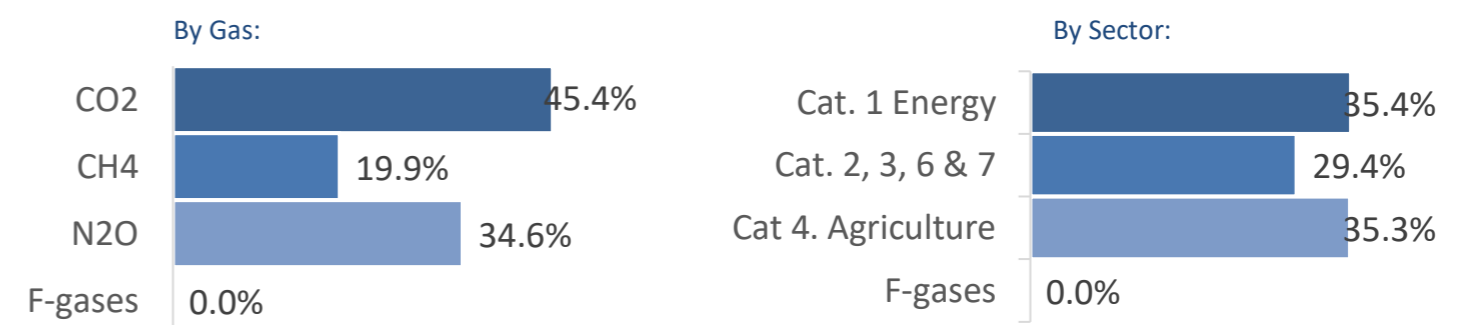
Per-Capita Emissions



GHG Emissions per GDP



2015 Total GHG Emissions excl. LULUCF



GHG Emissions

	1990	2000	2005	2010	2015	2020		2025		2030	
						low	high	low	high	low	high
(MtCO2eq/yr in GWP SAR)											
Assumed LULUCF Accounting Credits (-)/Debits (+)											
NDC covered LULUCF Emissions	6	15	15	15	15	15	15	15	15	15	15
NDC covered Emissions excl. LULUCF	4	4	5	6	6	11	8	15	11	20	13
Total GHG excl. LULUCF	5	5	6	8	9	13	11	18	13	23	16
Total GHG incl. LULUCF	38	41	42	44	45	49	46	54	49	58	51

Relative GHG Emissions

	1990	2000	2005	2010	2015	2020		2025		2030	
						low	high	low	high	low	high
Total excl. LULUCF											
Relative 1990	100%	112%	139%	172%	193%	285%	235%	393%	291%	499%	346%
Relative 2000	89%	100%	124%	153%	172%	255%	209%	351%	260%	445%	309%
Relative 2005	72%	80%	100%	124%	139%	205%	168%	282%	209%	358%	249%
Relative 2010	58%	65%	81%	100%	112%	166%	136%	228%	169%	290%	201%
Relative 2015	52%	58%	72%	89%	100%	148%	121%	203%	151%	258%	179%

Per-Capita Emissions

	1990	2000	2005	2010	2015	2020		2025		2030	
						low	high	low	high	low	high
Total excl. LULUCF											
Population (Mio)	4	5	6	6	7	8	8	9	9	10	10
Per-Capita Emissions (tCO2eq/cap)	1.2	1.0	1.1	1.2	1.2	1.6	1.3	1.9	1.4	2.2	1.5
Relative 1990	100%	87%	95%	102%	100%	130%	107%	159%	118%	180%	125%
Relative 2000	115%	100%	109%	117%	115%	150%	123%	183%	135%	207%	144%
Relative 2005	106%	92%	100%	108%	106%	138%	113%	168%	125%	190%	132%
Relative 2010	98%	85%	93%	100%	98%	128%	105%	156%	116%	177%	123%
Relative 2015	100%	87%	94%	102%	100%	130%	107%	159%	118%	180%	125%

Data Sources:

Cat1_CO2	PRIMAPHIST17	Cat5A1_CO2	UNFCCC CRF + Nat. Comms.
Cat2367_CO2	PRIMAPHIST17	Cat5A2_CO2	UNFCCC CRF + Nat. Comms.
Cat4_CO2	PRIMAPHIST17	Cat5LtoNonFL_CO2	UNFCCC CRF + Nat. Comms.
Cat5_CO2	PRIMAPHIST17	Cat5GCMCWMW_C	UNFCCC CRF
Cat1_CH4	PRIMAPHIST17	Cat5A1ForestFires	UNFCCC Cat5 + EDGAR(IPCC Database)
Cat2367_CH4	PRIMAPHIST17	Cat5A1HWP_CO2	UNFCCC CRF + Nat. Comms.
Cat4_CH4	PRIMAPHIST17	Cat5bisA_CO2	UNFCCC CRF + NATCOMM.
Cat5_CH4	PRIMAPHIST17	Cat5bisB_CO2	UNFCCC CRF + NATCOMM.
Cat1_N2O	PRIMAPHIST17	Cat5bisC_CO2	UNFCCC CRF + NATCOMM.
Cat2367_N2O	PRIMAPHIST17	Cat5bisD_CO2	UNFCCC CRF + NATCOMM.
Cat4_N2O	PRIMAPHIST17	Cat5bisE_CO2	UNFCCC CRF + NATCOMM.
Cat5_N2O	PRIMAPHIST17	PRO_WM_Cat5_G	UNFCCC Annex I Reports
Cat0_HFCs	PRIMAPHIST17	Metric	GWP SAR
Cat0_PFCs	PRIMAPHIST17		
Cat0_SF6	PRIMAPHIST17		
Population	UN 2015 Population Projections MEDIUM		
GDP	IMF WEO 2015, PPP adjusted GDP, constant 2009 prices...		
IPCC WG3 Scenario	IMAGE AMPERE2-550-FullTech-HST		
PRIMAPHIST16 description:	www.pik-potsdam.de/primap-live/primap-hist/		
Gratefully acknowledged in particular: PRIMAP, CAIT, CDIAC, EDGAR, IPCC, IEA, UNEP Gap Team, AMPERE Team and comments on earlier versions, in particular by Giacomo Grassi. Errors and misjudgements are our own. Malte Meinshausen & Ryan Alexander; The "Fiji COP23" Edition was enabled through support via the BMUB project UM14 41 4060			
This Factsheet is available at www.climatecollege.unimelb.edu.au/indc-factsheets . Check out as well: www.climateactiontracker.org , www.mitigation-contributions.org , cait.wri.org , infographics.pbl.nl/indc/ , live.primap.org , www.unep.org/climatechange/pledgepipeline , and our twitter feed @ClimateCollege			

climatecollege.unimelb.edu.au



Various 'fair' contributions for a global 'least-cost' 2°C path (total incl. LULUCF):

More info on www.mitigation-contributions.org

2025 rel. 2010:

2030 rel. 2010:

LEADER	#N/A
CDC	#N/A
ECPC50	#N/A
ECPC90	#N/A
GDR	#N/A
INDC HIGH	12%
INDC LOW	23%

LEADER	#N/A
CDC	#N/A
ECPC50	#N/A
ECPC90	#N/A
GDR	#N/A
INDC HIGH	18%
INDC LOW	34%

"Fair" contributions for a global 'least-cost' 2°C track:

LEADER	Leader
CDC	Common-but-diff. per-cap. convergence
ECPC50	Eq. cum. Per-capita since 1950
ECPC90	Eq. cum. Per-capita since 1990
GDR	Greenhouse Development Rights
#N/A	No available data