

Paris Agreement ratified on: 27/03/2017

# El Salvador

Per-Capita Emissions in 2030 rel. 2015 (excl. LULUCF): **+37%**

NDC 2025

NDC 2030

2015 World Rank

2025 World Rank

2030 World Rank

Share of World Emissions excl. LULUCF (Rank):

0.0% #136

0.0% #133

0.0% #134

Per-Capita Emissions (tCO2eq/cap)

2t #153

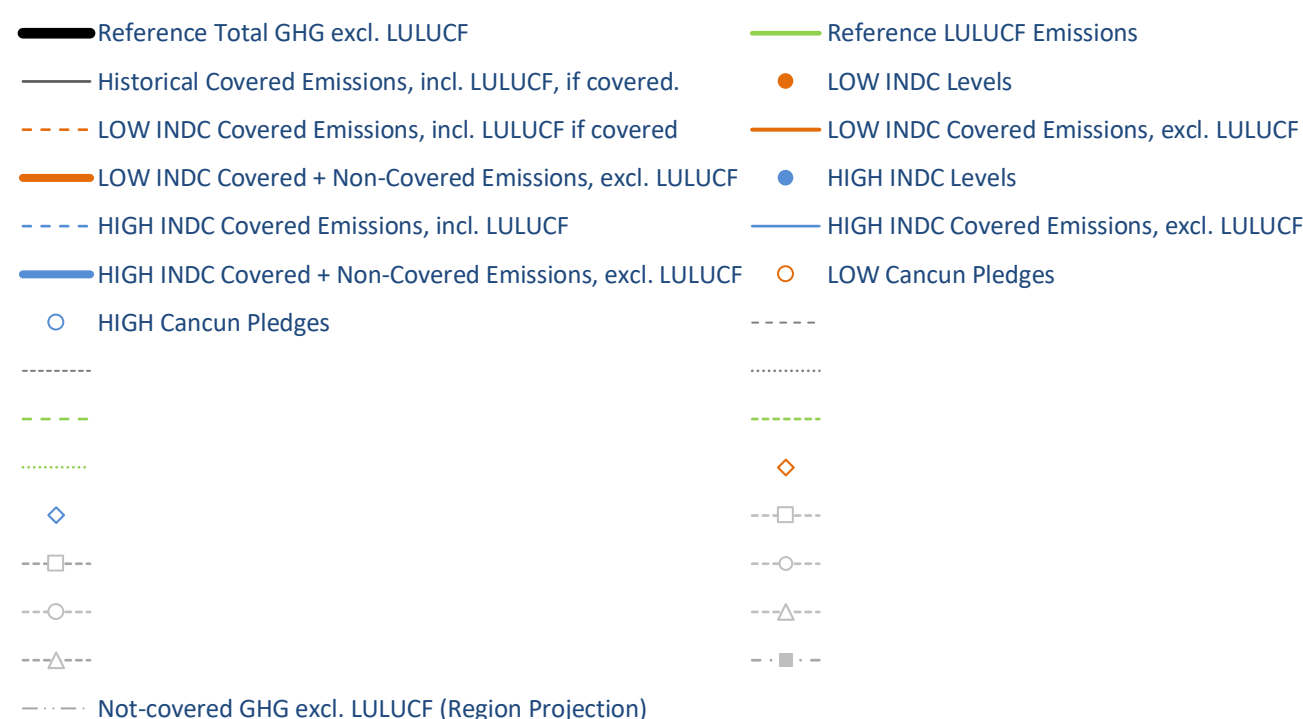
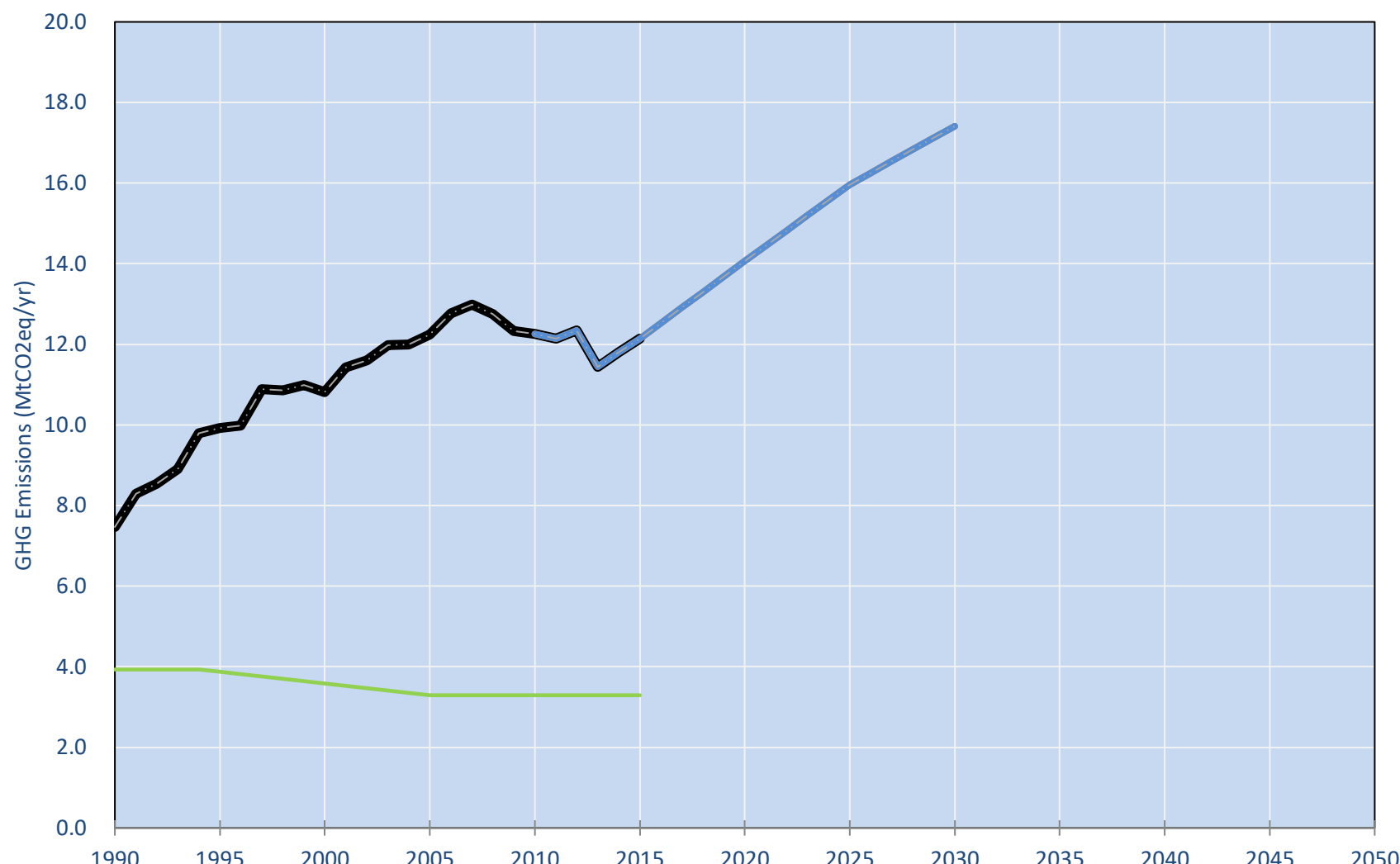
2.5t #139

2.7t #134

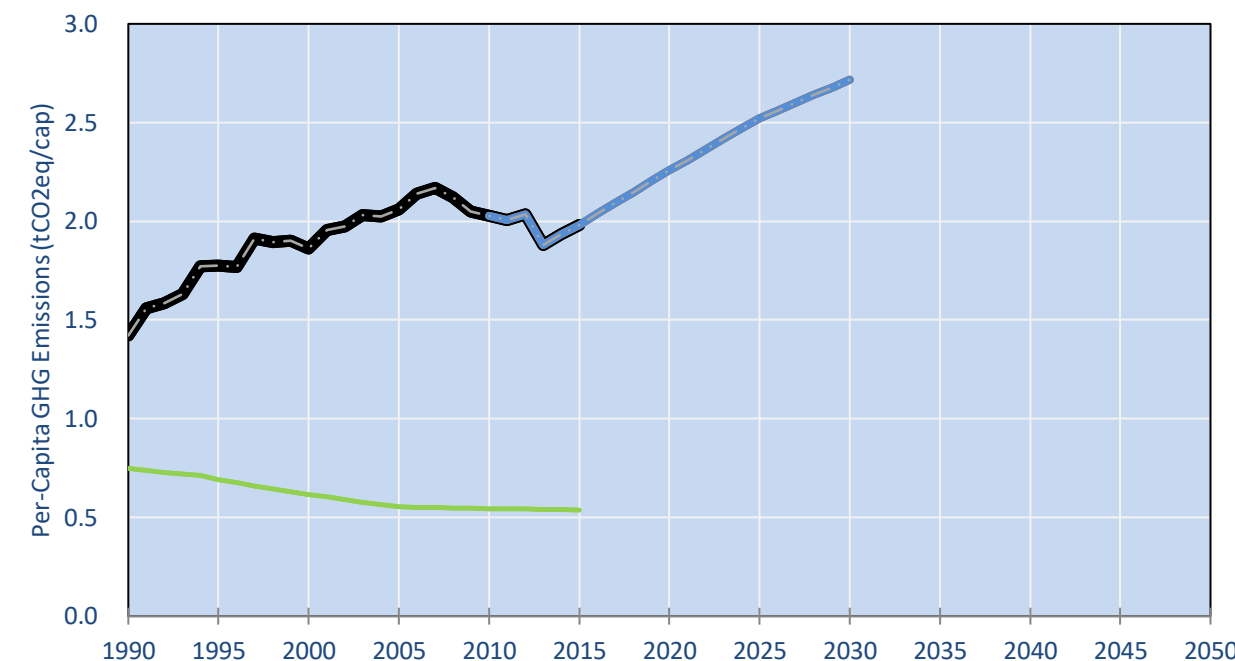
NDC: A set of policies and measures for GHG reductions by 2025 and 2030.. (GWP unclear)

INDC Submitted: 17/11/2015

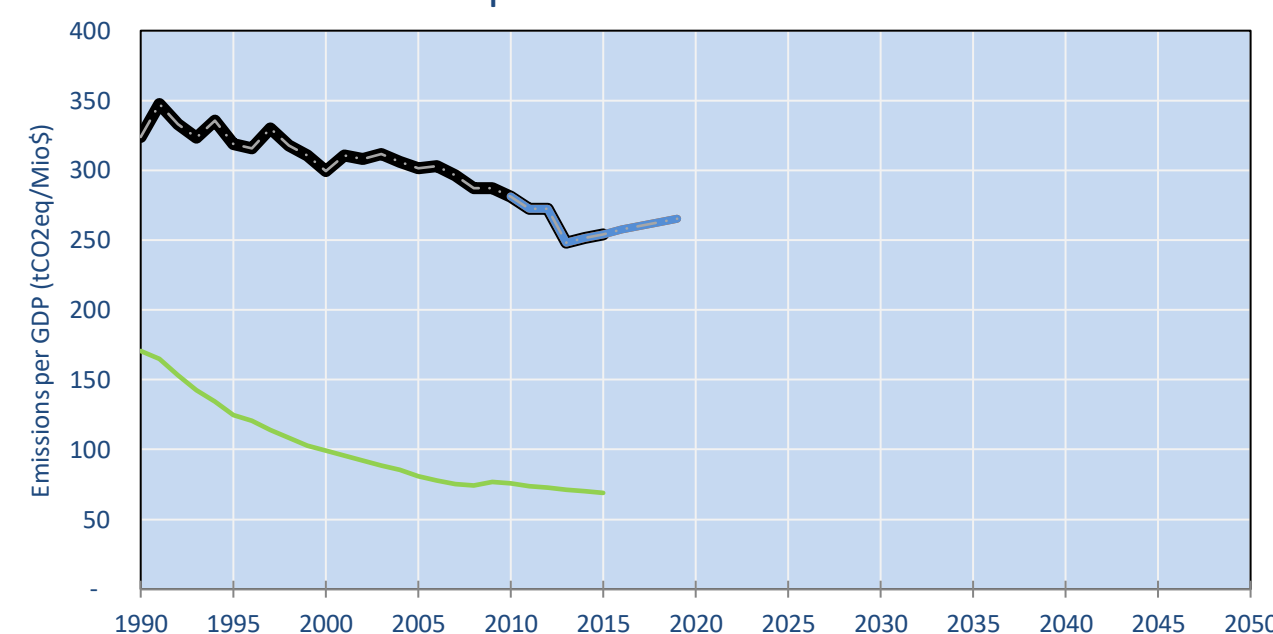
## GHG Emissions



## Per-Capita Emissions

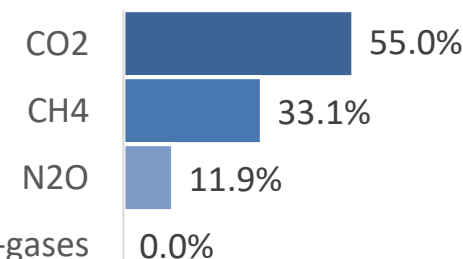


## GHG Emissions per GDP

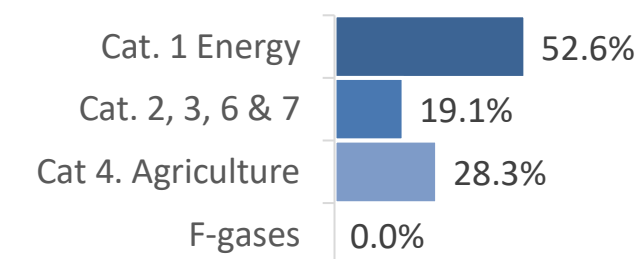


## 2015 Total GHG Emissions excl. LULUCF

By Gas:



By Sector:



## GHG Emissions

	1990	2000	2005	2010	2015	2020	2025	2030	
(MtCO2eq/yr in GWP AR5)						low	high	low	high
Assumed LULUCF Accounting Credits (-)/Debits (+)									
NDC covered LULUCF Emissions	-	-	-	-	-	-	-	-	-
NDC covered Emissions excl. LULUCF	-	-	-	-	-	-	-	-	-
Total GHG excl. LULUCF	7	11	12	12	12	14	14	16	16
Total GHG incl. LULUCF	11	14	16	16	15	17	17	19	19

## Relative GHG Emissions

	1990	2000	2005	2010	2015	2020	2025	2030	
Total excl. LULUCF						low	high	low	high
Relative 1990	100%	145%	164%	164%	163%	188%	188%	214%	214%
Relative 2000	69%	100%	113%	113%	112%	130%	130%	148%	148%
Relative 2005	61%	88%	100%	100%	99%	115%	115%	130%	130%
Relative 2010	61%	88%	100%	100%	99%	115%	115%	130%	130%
Relative 2015	62%	89%	101%	101%	100%	116%	116%	132%	132%

## Per-Capita Emissions

	1990	2000	2005	2010	2015	2020	2025	2030	
Total excl. LULUCF						low	high	low	high
Population (Mio)	5	6	6	6	6	6	6	6	6
Per-Capita Emissions (tCO2eq/cap)	1.4	1.9	2.1	2.0	2.0	2.3	2.3	2.5	2.5
Relative 1990	100%	131%	145%	143%	139%	159%	159%	177%	177%
Relative 2000	76%	100%	111%	109%	106%	121%	121%	136%	136%
Relative 2005	69%	90%	100%	99%	96%	110%	110%	123%	123%
Relative 2010	70%	92%	101%	100%	98%	111%	111%	124%	124%
Relative 2015	72%	94%	104%	102%	100%	114%	114%	127%	127%

## Data Sources:

Cat1\_CO2 PRIMAPHIST17  
 Cat2367\_CO2 PRIMAPHIST17  
 Cat4\_CO2 PRIMAPHIST17  
 Cat5\_CO2 PRIMAPHIST17  
 Cat1\_CH4 PRIMAPHIST17  
 Cat2367\_CH4 PRIMAPHIST17  
 Cat4\_CH4 PRIMAPHIST17  
 Cat5\_CH4 PRIMAPHIST17  
 Cat1\_N2O PRIMAPHIST17  
 Cat2367\_N2O PRIMAPHIST17  
 Cat4\_N2O PRIMAPHIST17  
 Cat5\_N2O PRIMAPHIST17  
 Cat0\_HFCs PRIMAPHIST17  
 Cat0\_PFCs PRIMAPHIST17  
 Cat0\_SF6 PRIMAPHIST17  
 Population UN 2015 Population Projections MEDIUM  
 GDP IMF WEO 2015, PPP adjusted GDP, constant 2009 prices...  
 PRIMAPHIST16 Scenario IMAGE | AMPERE2-550-FullTech-HST  
 PRIMAPHIST16 description: www.pik-potsdam.de/primap-live/primap-hist/  
 Gratefully acknowledged in particular: PRIMAP, CAIT, CDIAC, EDGAR, IPCC, IEA, UNEP GAP Team, AMPERE Team and comments on earlier versions, in particular by Giacomo Grassi. Errors and misjudgements are our own. Malte Meinshausen & Ryan Alexander; The "Fiji COP23" Edition was enabled through support via the BMUB project UM14 41 4060  
 This Factsheet is available at www.climatecollege.unimelb.edu.au/indc-factsheets. Check out as well: www.climateactiontracker.org, www.mitigation-contributions.org, cait.wri.org, infographics.pbl.nl/indc, live.primap.org, www.unep.org/climatechange/pledgepipeline, and our twitter feed @ClimateCollege  
 climatecollege.unimelb.edu.au  
 AUSTRALIAN-GERMAN CLIMATE & ENERGY COLLEGE

## Various 'fair' contributions for a global 'least-cost' 2°C path (total incl. LULUCF):

	2025 rel. 2010:	2030 rel. 2010:
LEADER	#N/A	LEADER
CDC	#N/A	CDC
ECPC50	#N/A	ECPC50
ECPC90	#N/A	ECPC90
GDR	#N/A	GDR
INDC HIGH	24%	INDC HIGH
INDC LOW	24%	INDC LOW

## More info on www.mitigation-contributions.org

	"Fair" contributions for a global 'least-cost' 2°C track:
LEADER	LEADER
CDC	Common-but-diff. per-cap. convergence
ECPC50	Eq. cum. Per-capita since 1950
ECPC90	Eq. cum. Per-capita since 1990
GDR	Greenhouse Development Rights
#N/A	No available data